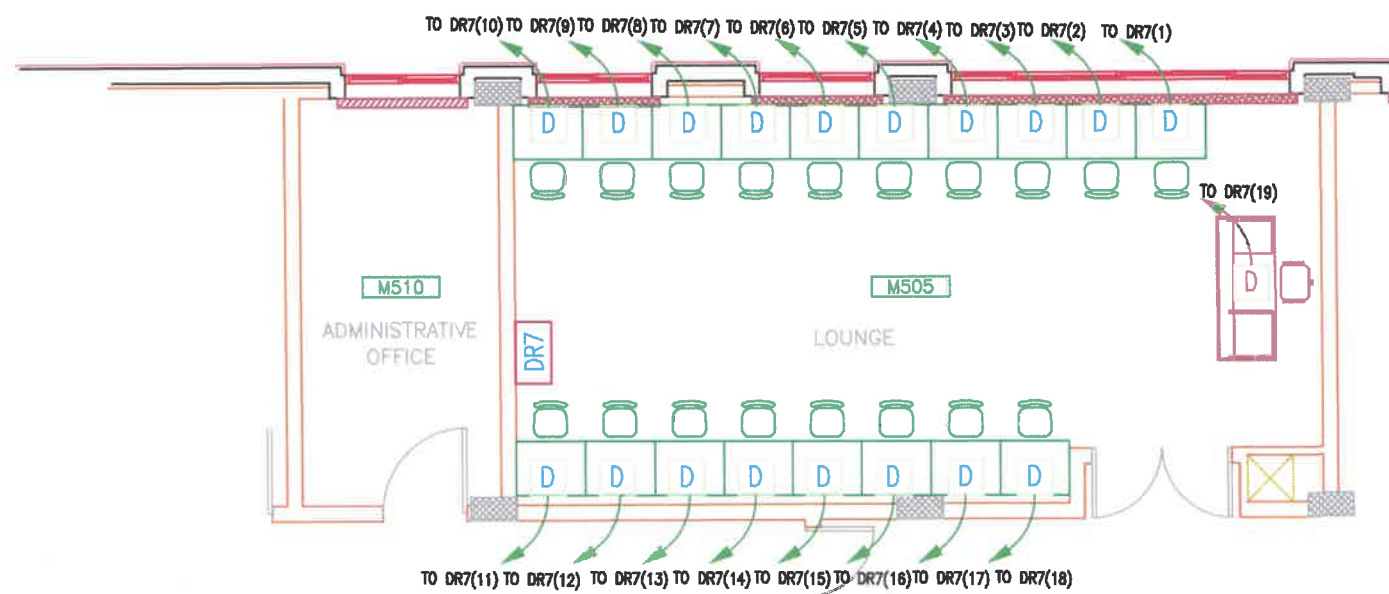


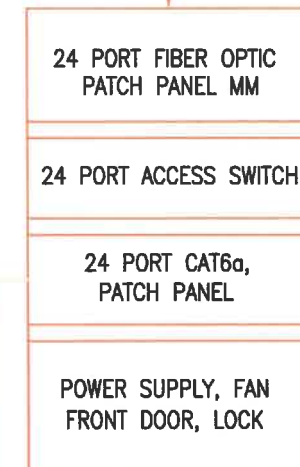
AS-BUILT DATA



DATA SYSTEM

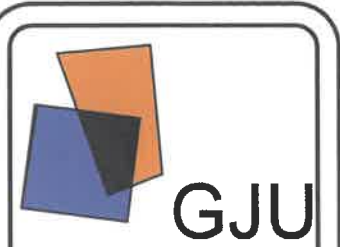
D --- 19 NoS --- D

8 CORE MM FIBER OPTIC CABLE
LAID ON CABLE TRAY TO MAIN DATA
RACK IN BUILDING M (GROUND
FLOOR)



DR7 LAB.M505 (9U)
19 RJ45

1x4P FTP CAT6a
PVC CONDUIT

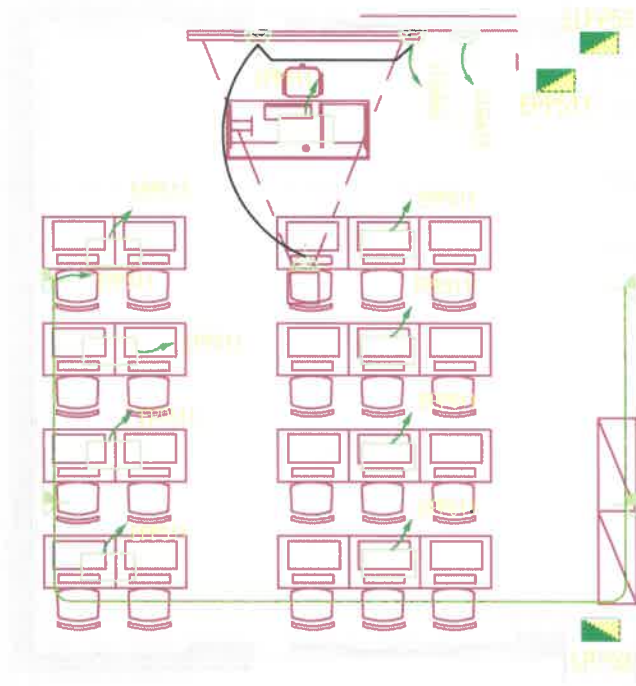


Computer Labs

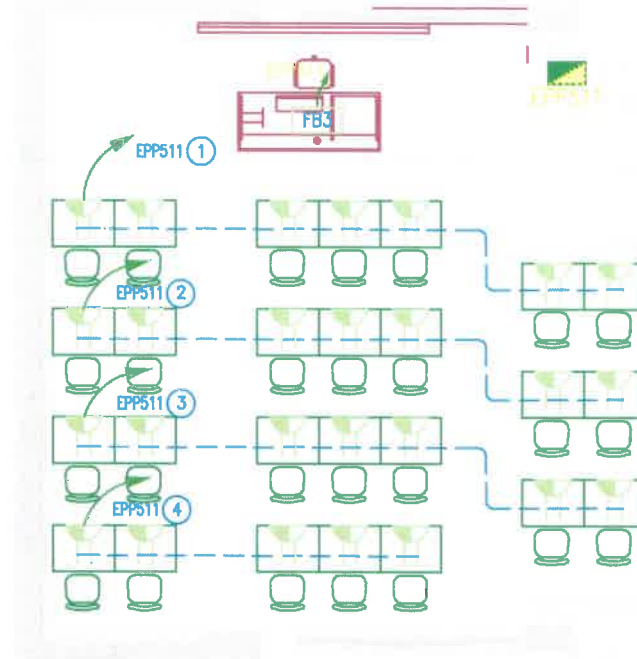
M505



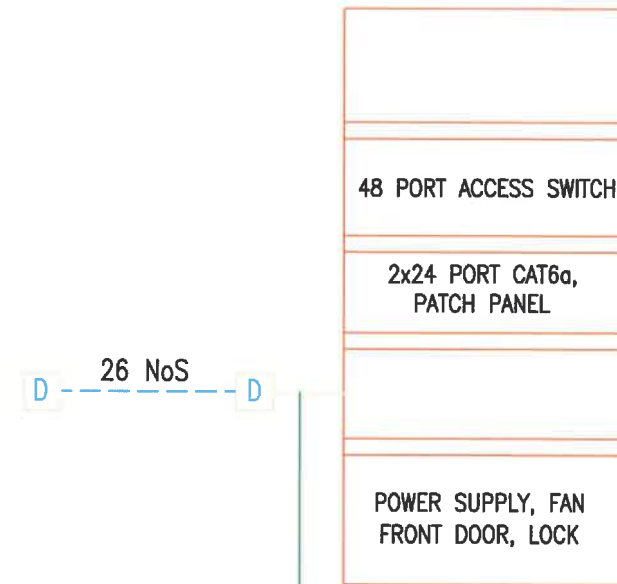
Project	Sheet
Date	1
Scale	N.T.S



AS-BUILT POWER

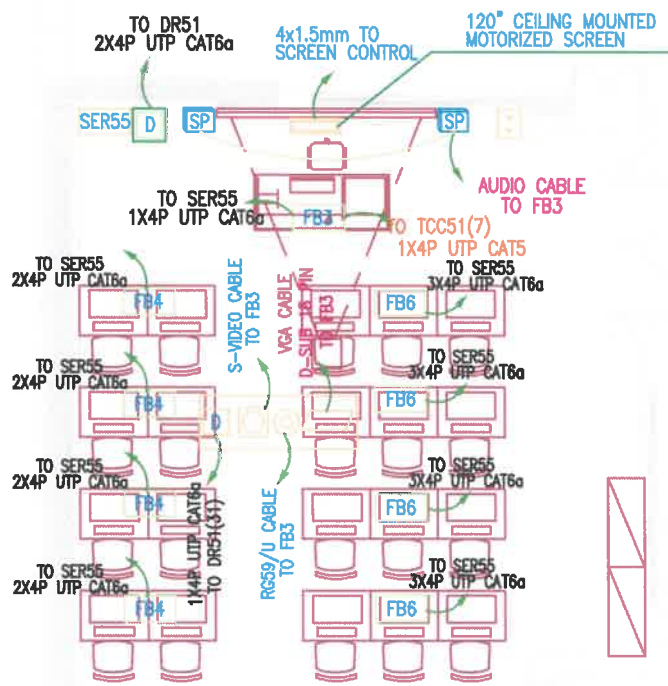


POWER SYSTEM

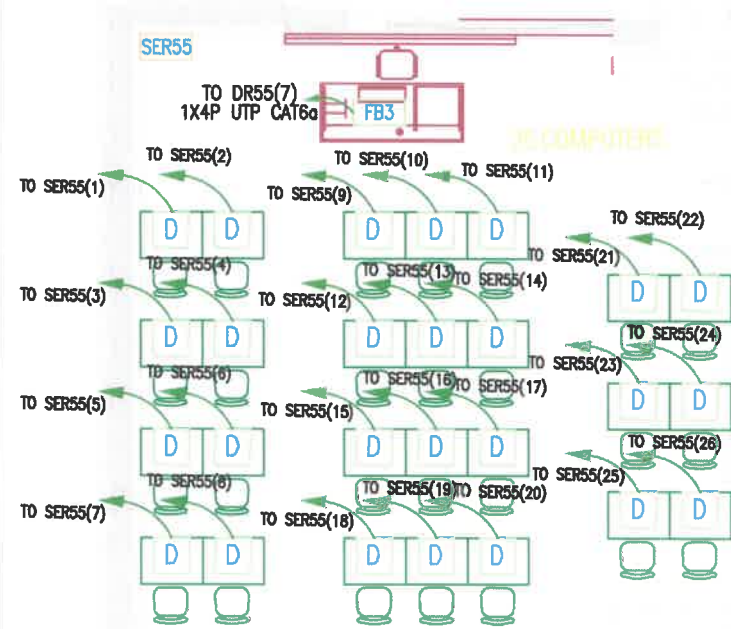


D - 26 NoS - D

1x4P FTP CAT6a
PVC CONDUIT



AS-BUILT DATA



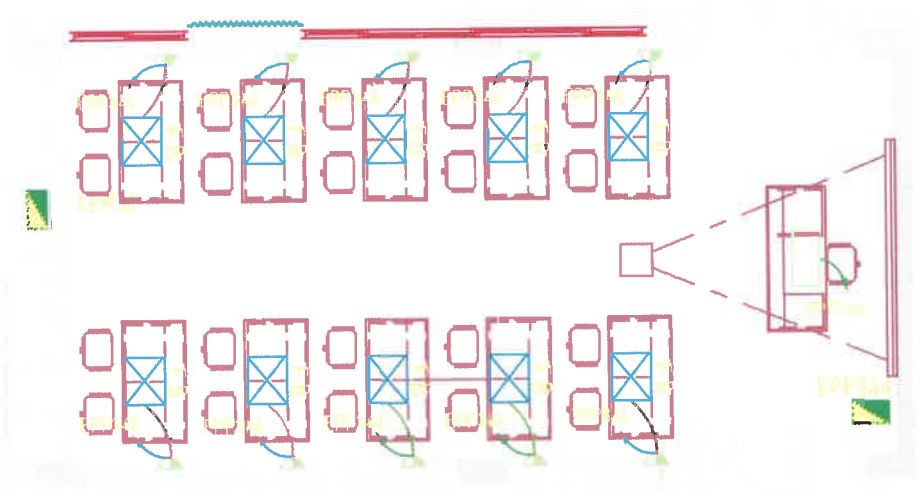
DATA SYSTEM

جامعة الجوف
Gulf University
الهندسة الإلكترونية
Electronics Engineering

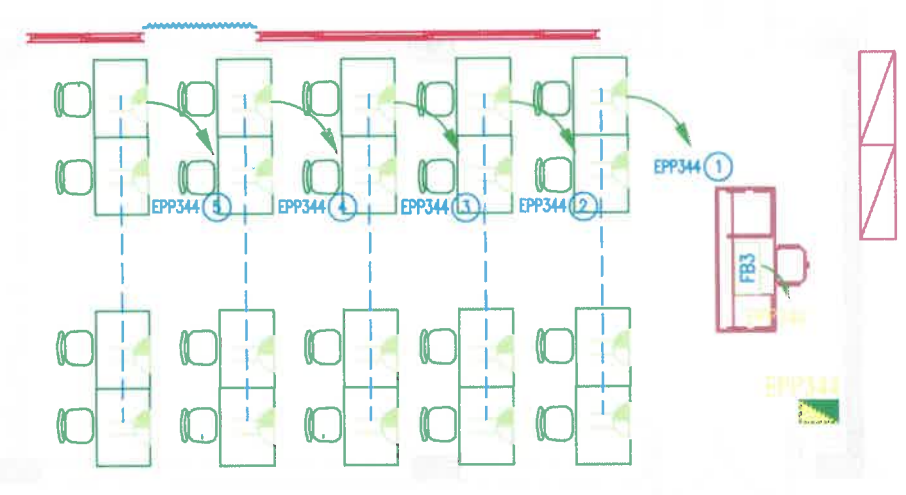
Computer Labs

C408

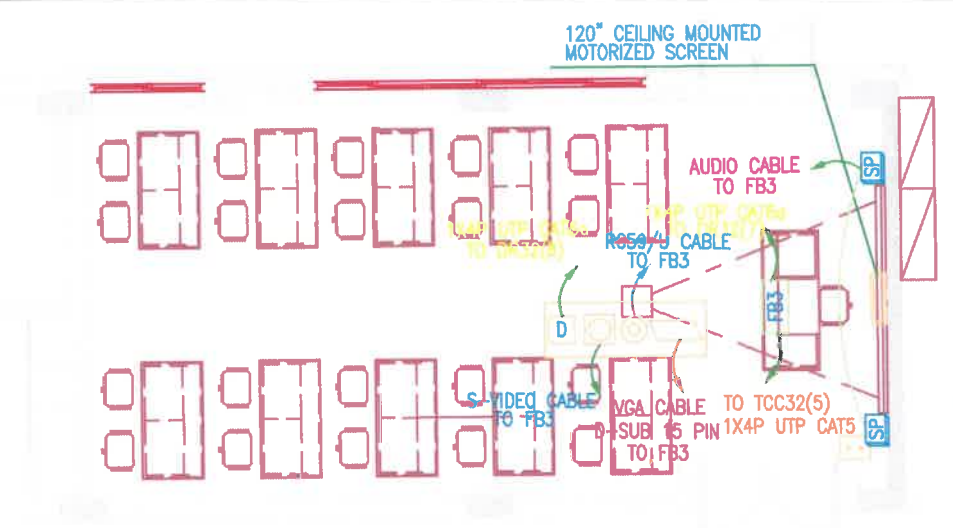
Project	Sheet
Date	2
Scale	N.T.S



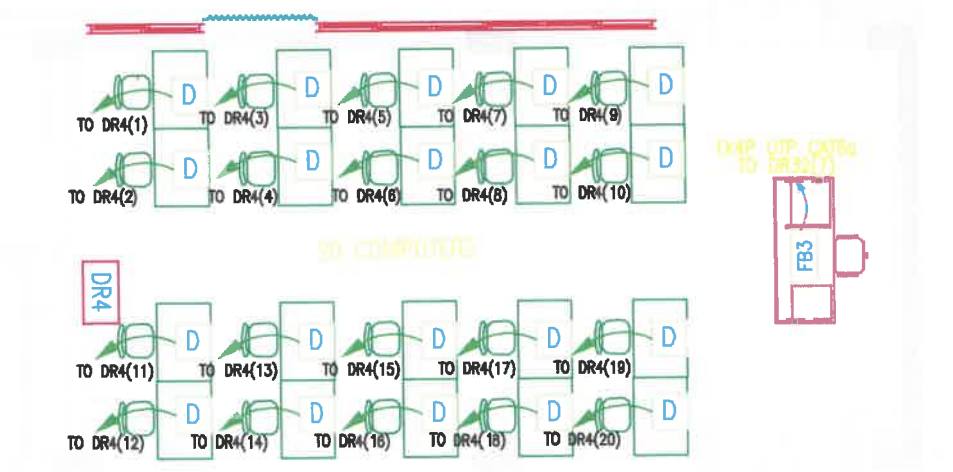
AS-BUILT POWER



POWER SYSTEM

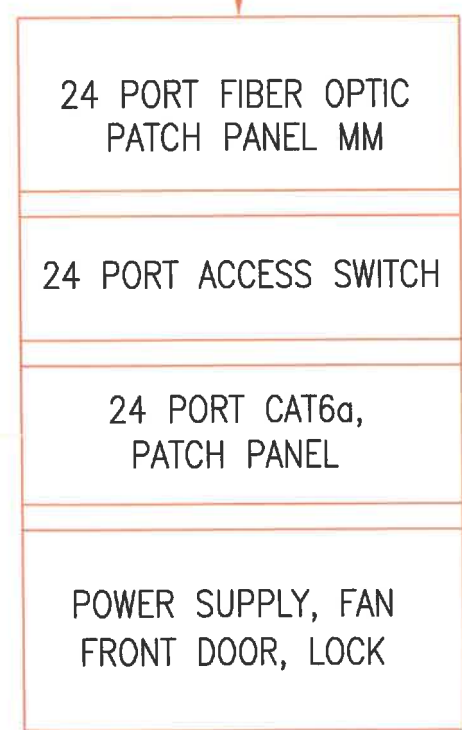


AS-BUILT DATA



DATA SYSTEM

8 CORE MM FIBER OPTIC CABLE
LAID ON CABLE TRAY TO MAIN DATA RACK
IN BUILDING C (C235-Server Room)



DR4 LAB.C237 (9U)
20 RJ45

1x4P FTP CAT6a
PVC CONDUIT AND TRUNKS

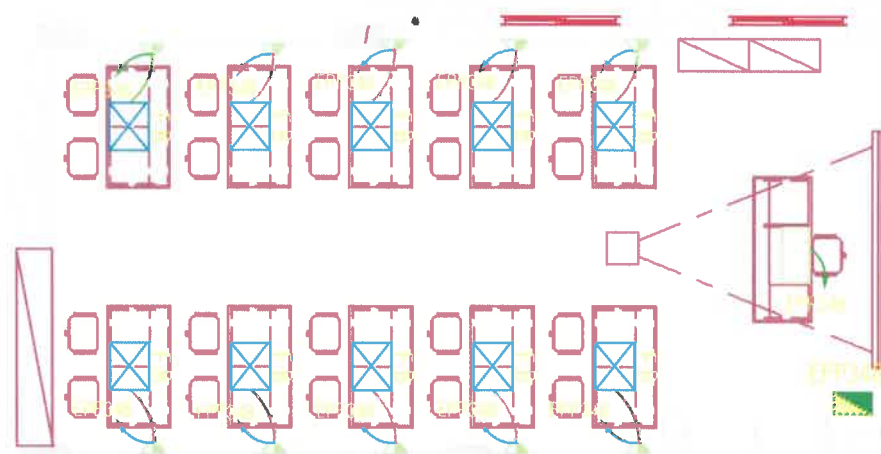
20 NoS



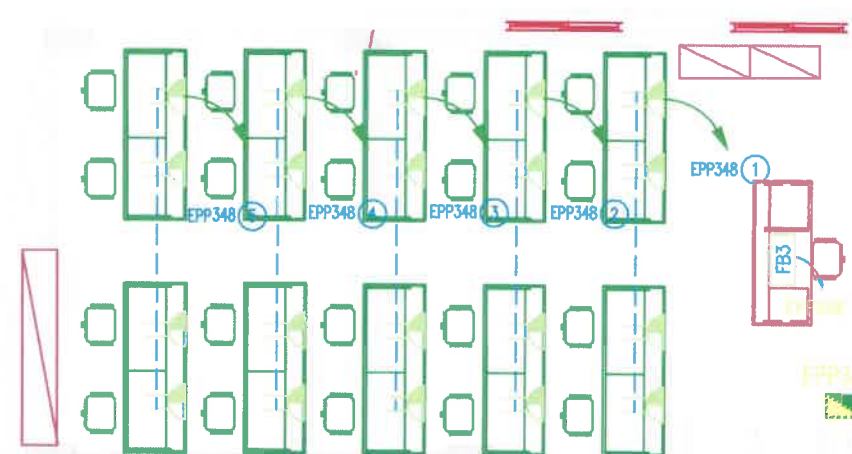
Computer Labs

C237

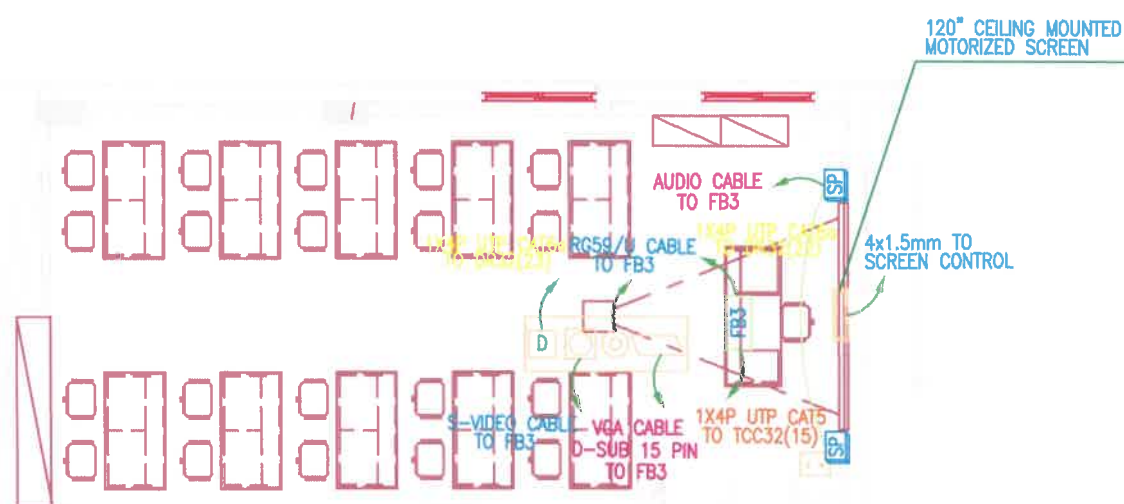
Project	Sheet
Date	3
Rev	N.T.S



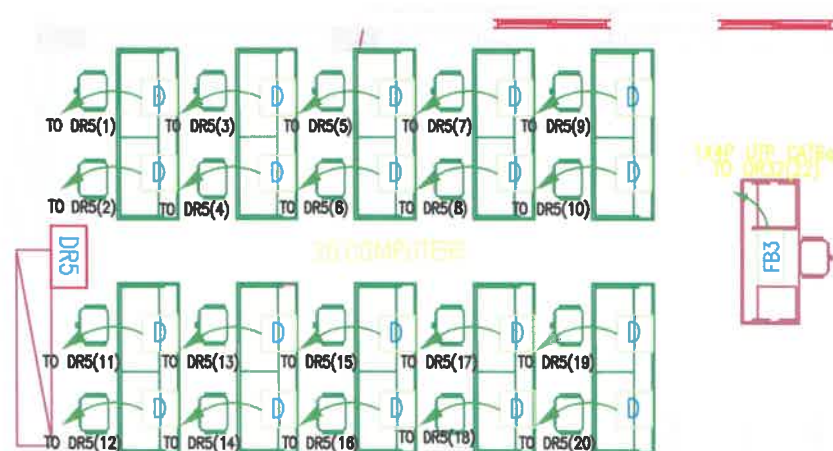
AS-BUILT POWER



POWER SYSTEM

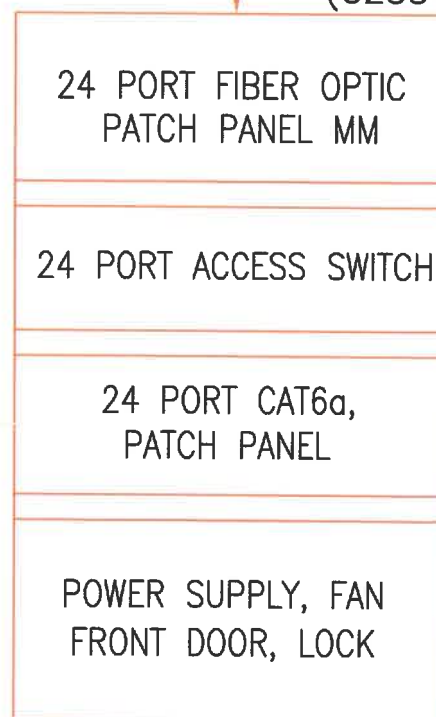


AS-BUILT DATA



DATA SYSTEM

8 CORE MM FIBER OPTIC CABLE
LAID ON CABLE TRAY TO MAIN
DATA RACK IN BUILDING C
(C235-Server Room)



DR5 LAB.C227 (9U)
20 RJ45

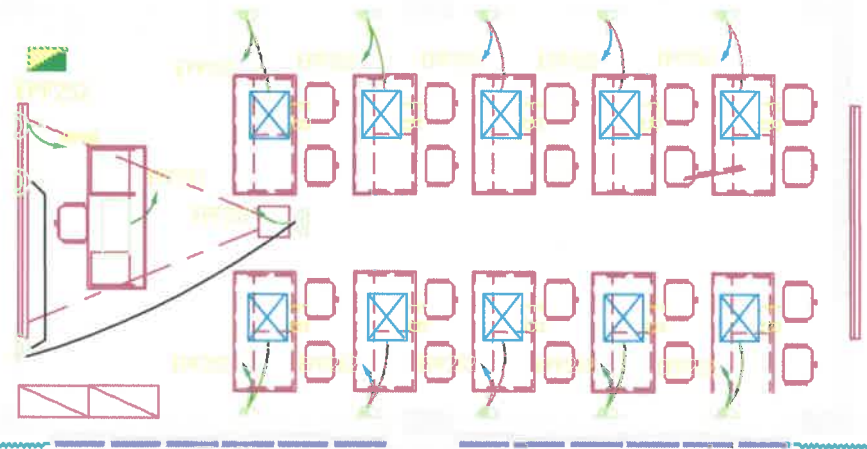
1x4P FTP CAT6a
PVC CONDUIT AND TRUNKS

20 NoS

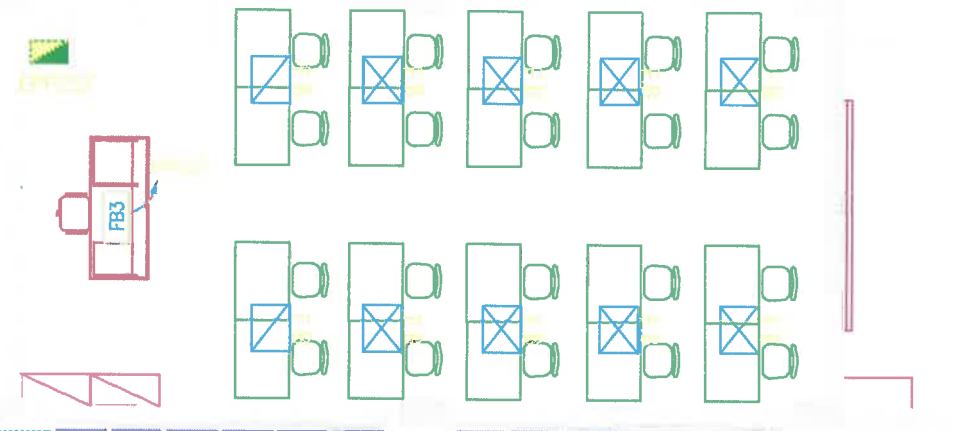
Computer Labs

C227

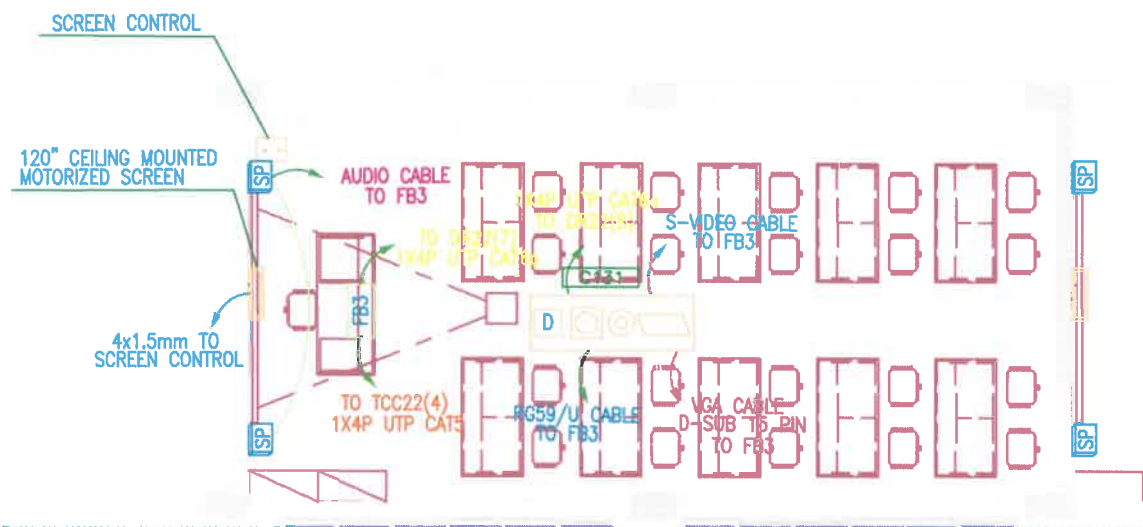
Project	Sheet
Date	4
Scale	N.T.S



AS-BUILT POWER

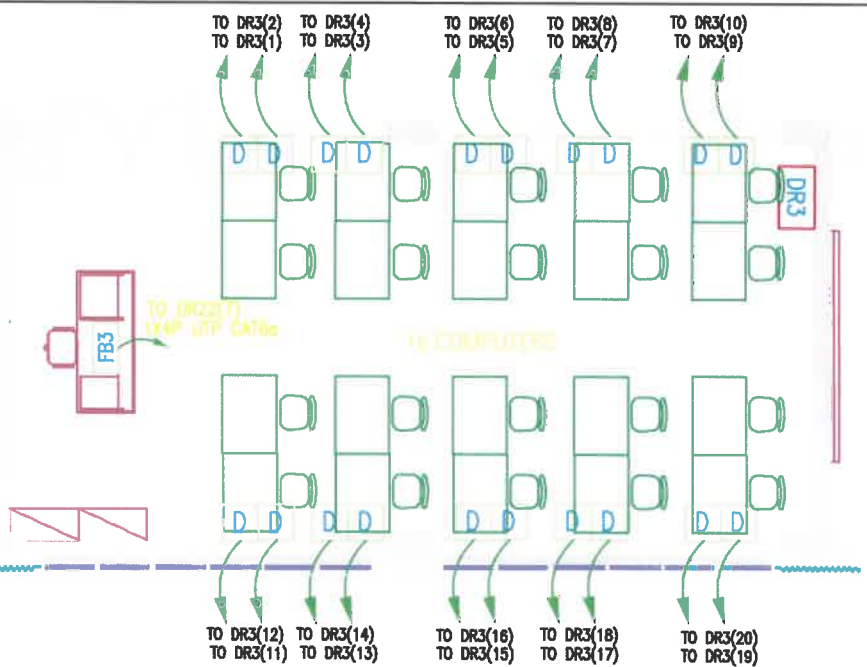


POWER SYSTEM



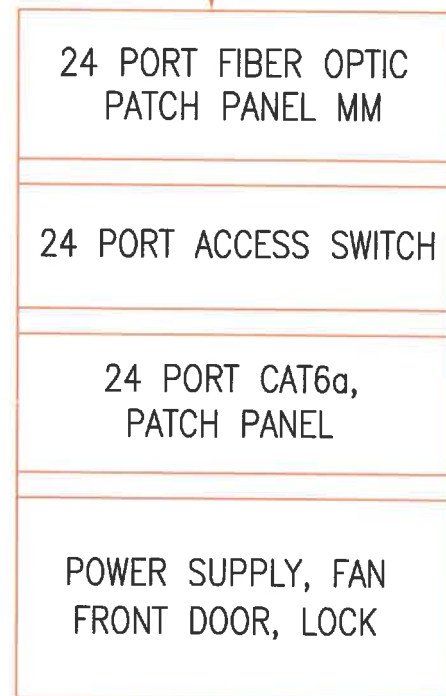
AS-BUILT DATA

D - 15 NoS - D



DATA SYSTEM

8 CORE MM FIBER OPTIC CABLE
LAI D ON CABLE TRAY TO MAIN DATA RACK
IN BUILDING C (C235-Server Room)



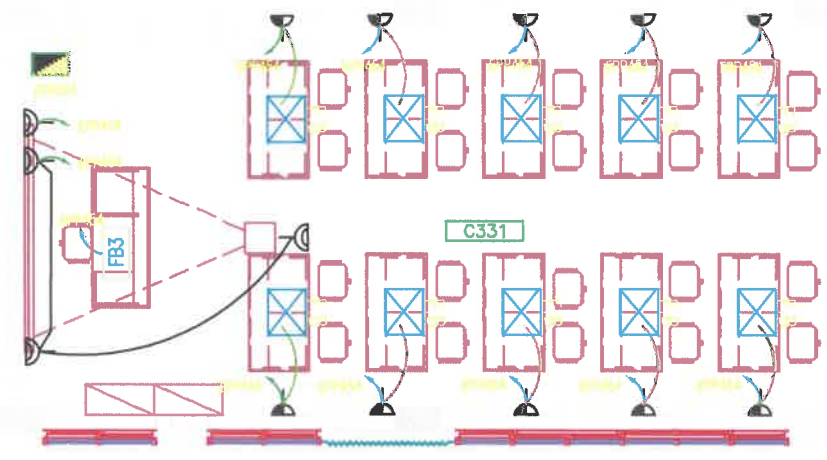
DR3 LAB.C131 (9U)
16 RJ45

1x4P FTP CAT6a
PVC CONDUIT AND TRUNKS

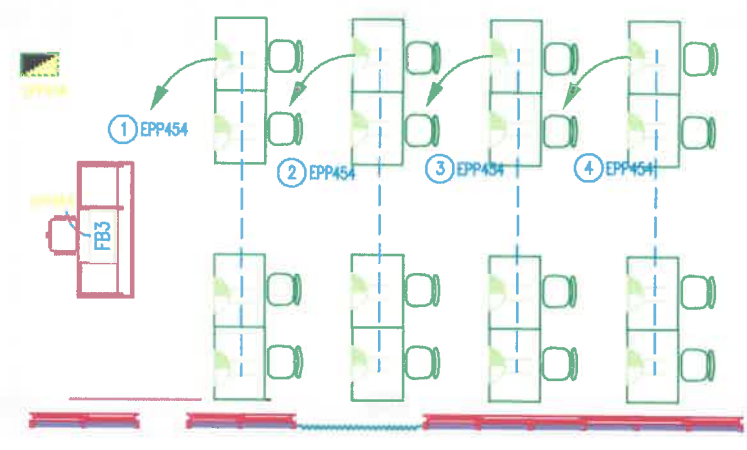
Computer Labs

C131

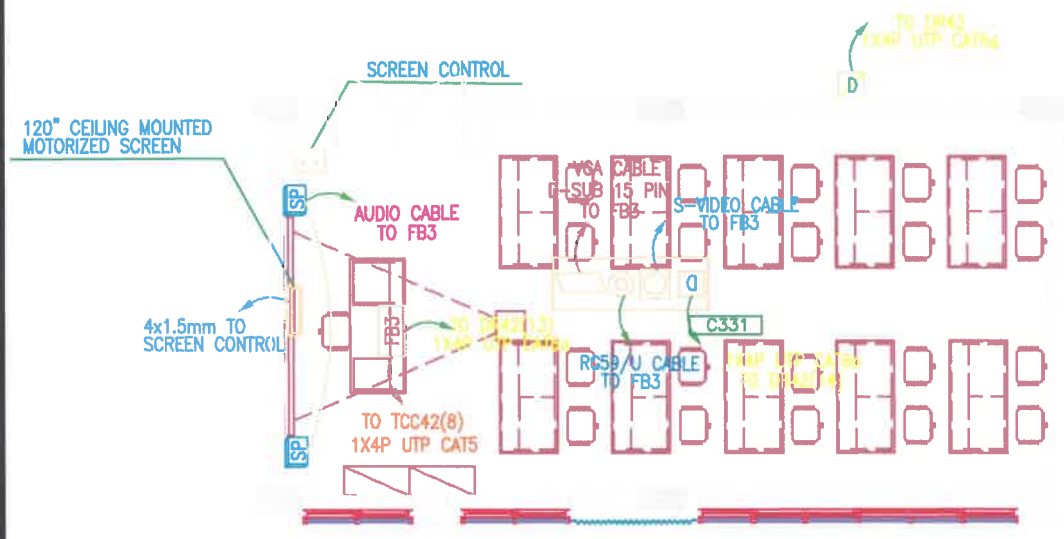
Project	Sheet
Date	5
Scale	N.T.S



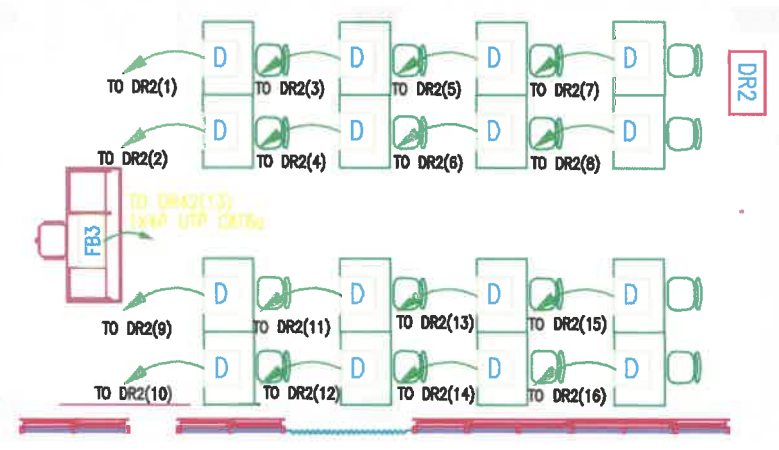
AS-BUILT POWER



POWER SYSTEM

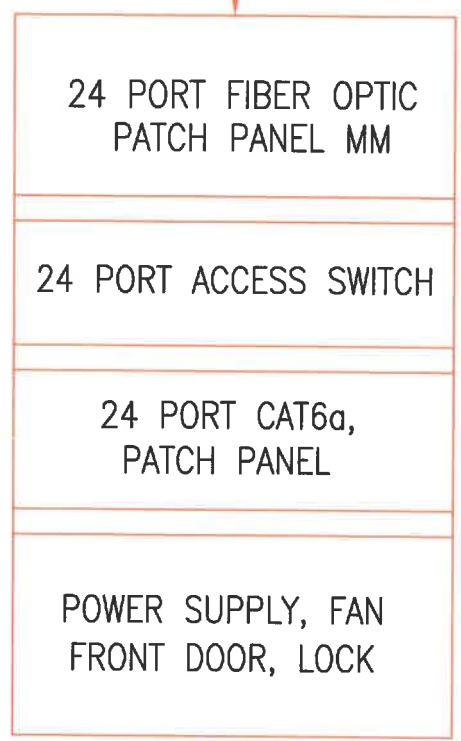


AS-BUILT DATA



DATA SYSTEM

8 CORE MM FIBER OPTIC CABLE
LAID ON CABLE TRAY TO MAIN DATA RACK
IN BUILDING C (C235-Server Room)



DR2 LAB.C331 (9U)
16 RJ45

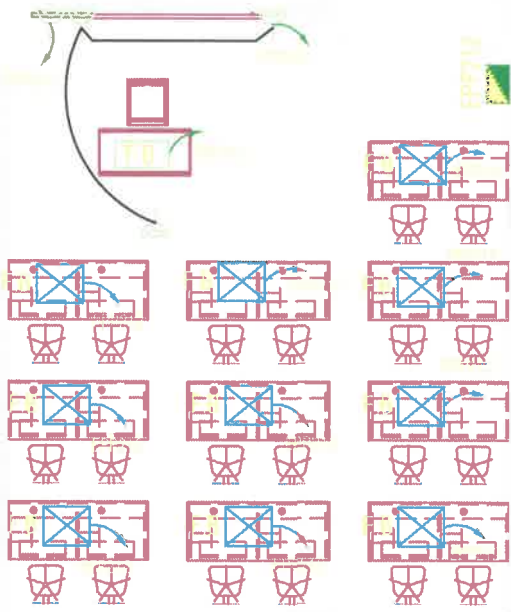
1x4P FTP CAT6a
PVC CONDUIT AND TRUNKS

16 NoS

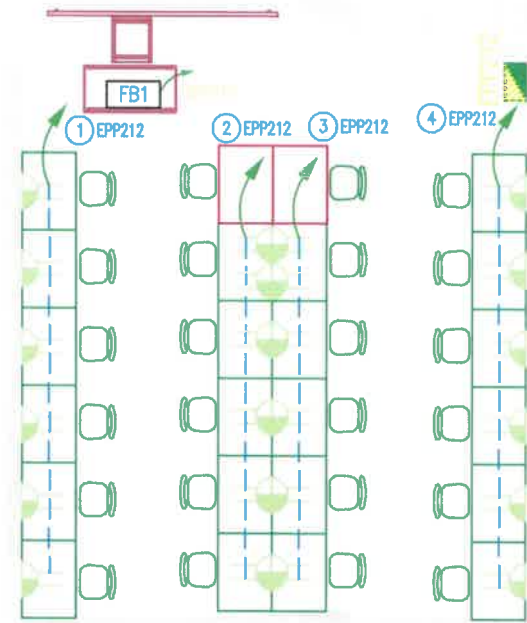
Computer Labs

C331

Project	Sheet
Date	6
Scale	N.T.S

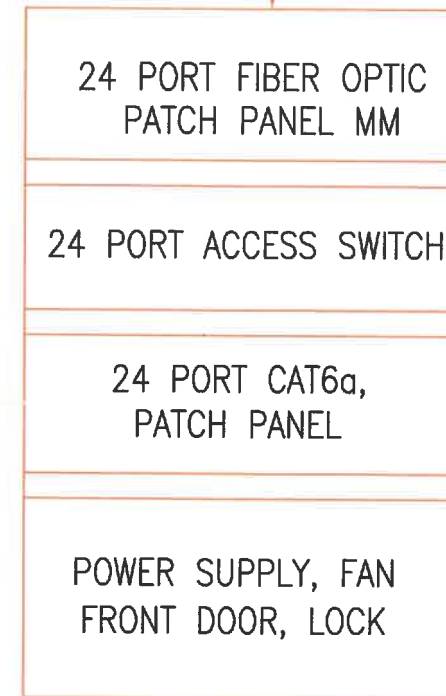


AS-BUILT POWER



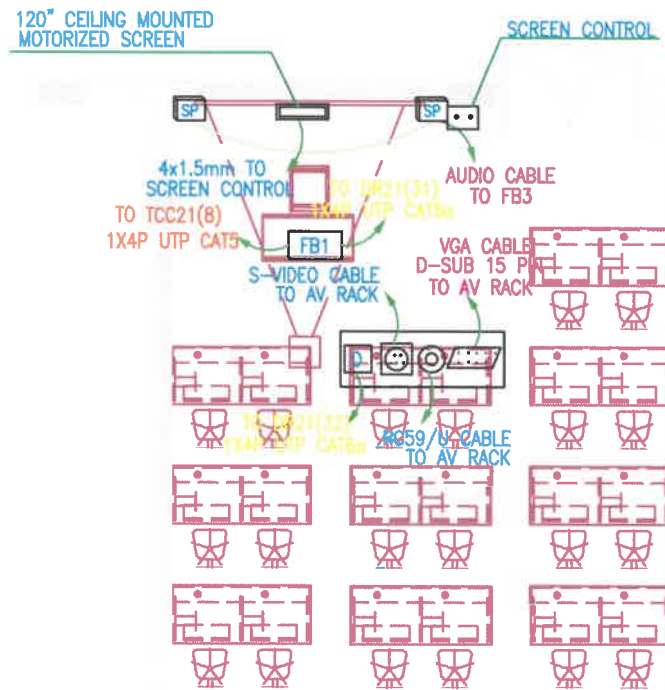
POWER SYSTEM

8 CORE MM FIBER OPTIC CABLE
LAID ON CABLE TRAY TO MAIN DATA
RACK IN BUILDING C (C235-Server
Room)

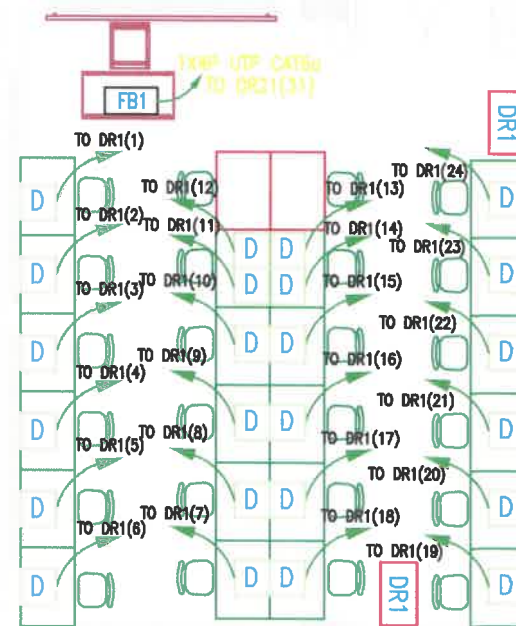


DR1 LAB.C106 (9U)
24 RJ45

1x4P FTP CAT6a
PVC CONDUIT AND TRUNKS



AS-BUILT DATA

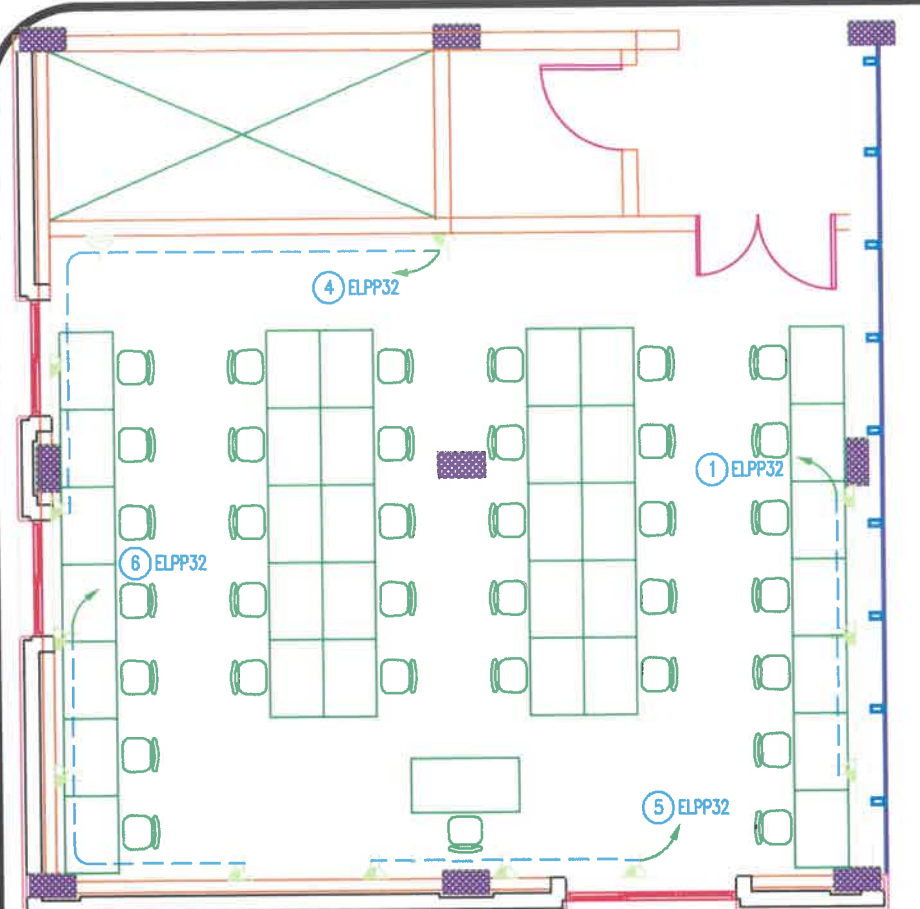


DATA SYSTEM

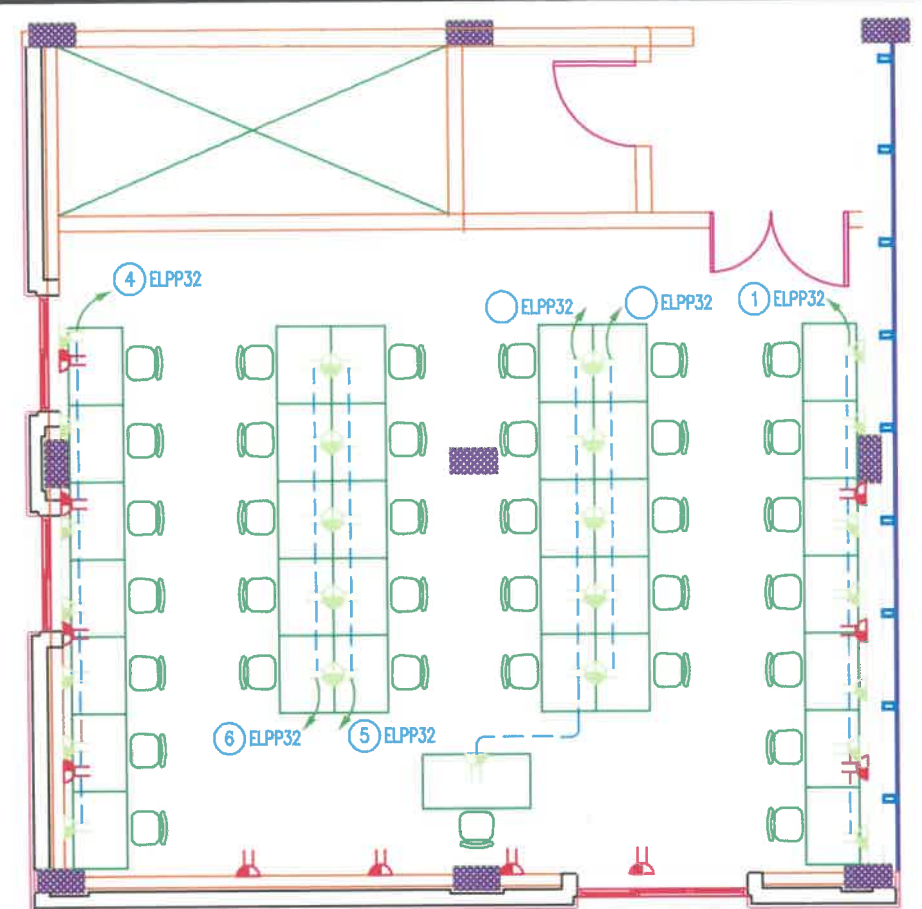
D - 24 NoS - D

Computer Labs
C106

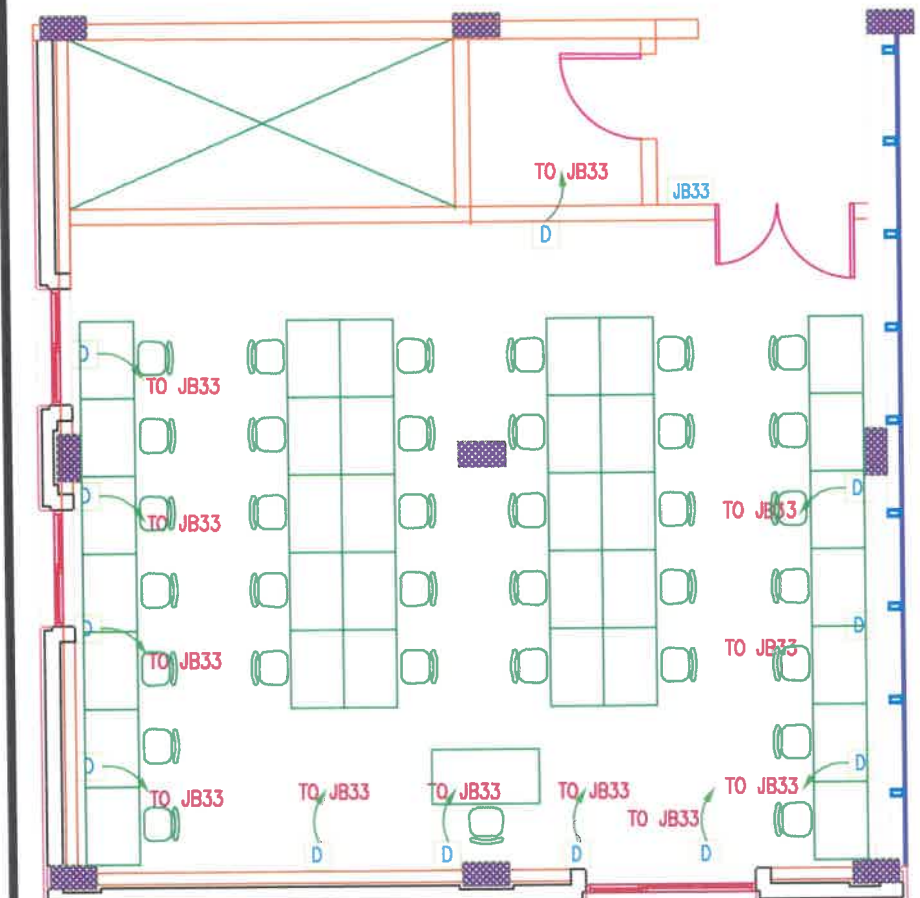
Project	Sheet
Date	7
Scale	N.T.S



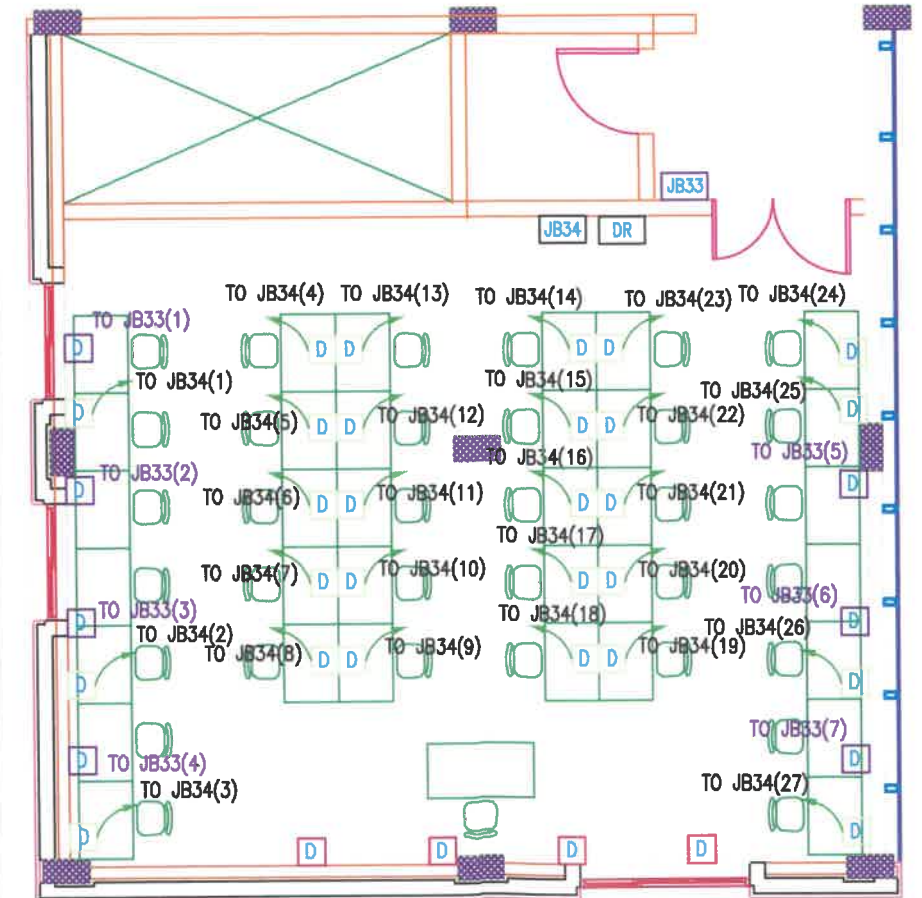
AS-BUILT POWER



POWER SYSTEM



AS-BUILT DATA



DATA SYSTEM

8 CORE MM FIBER OPTIC CABLE
LAID ON CABLE TRAY TO MAIN
DATA RACK IN BUILDING (L)

- 24 PORT FIBER OPTIC PATCH PANEL MM
- 48 PORT ACCESS SWITCH
- 24 PORT CAT6a, PATCH PANEL
- 24 PORT CAT6a, PATCH PANEL
- POWER SUPPLY, FAN FRONT DOOR, LOCK

DR LAB.L (15U)
27 RJ45

1x4P FTP CAT6a
PVC CONDUIT

D - 27 NoS - D

Computer Labs

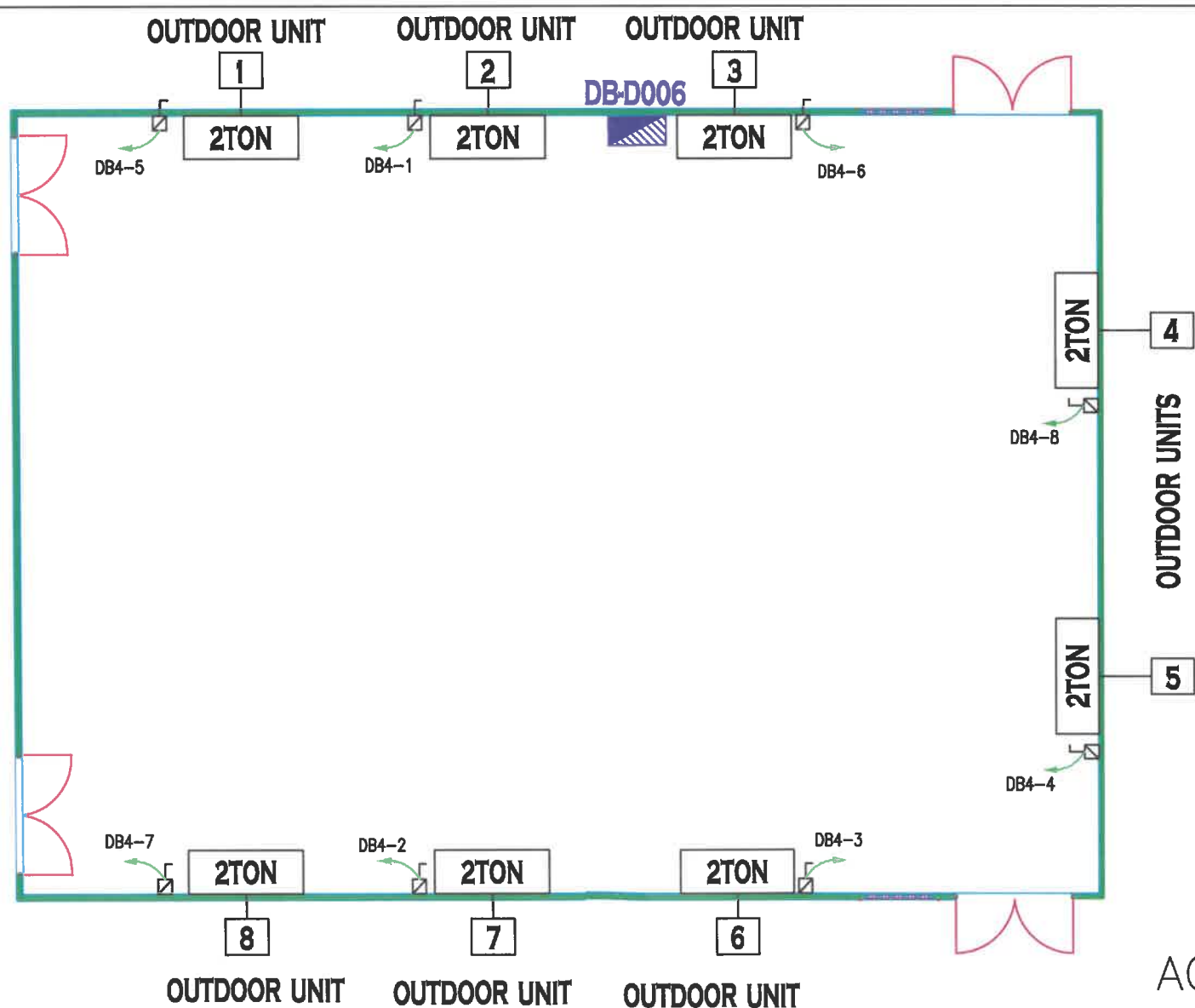
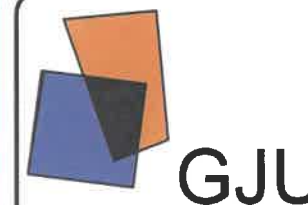
L208

Project	Sheet
Date	8
Scale	N.T.S



	RECESSED DESK DATA OUTLETS, AND DATA OUTLET ABOVE FALSE CEILING (AFC) .
	RECESSED DESK POWER OUTLET.
	SINGLE PHASE DISCONNECTING SWITCH
	DISTRIBUTION BOARD
	DATA CABINET
	JUNCTION BOX

SYMBOL	VOLTS	WATTS	DESCRIPTION	MOUNTING TYPE
	230	40W 4400 Lm 4000K	LED RECESSED MODULAR LIGHTING FIXTURES WITH A VERY SLENDER DESIGN AND HIGH-EFFICIENCY 4000K LED SOURCES. HOUSING: GALVANIZED STEEL SHEET, AND FRAME IN ALUMINUM. DIFFUSER: IN PRISMATIC PLASTIC WITH HIGH THERMAL TRANSMITTANCE. WARRANTY FOR 5 YEARS, UGR<19, LOW FLICKER, POWER FACTOR>0.95 LED: MAINTENANCE 50.000h, IP 40.	RECESSED (60X60)
	230	8W	HOUSING: IN PLASTIC MATERIAL, REFLECTOR: IN TRANSPARENT PLEXIGLASS. EQUIPMENT: SUPPLIED WITH ACCESSORIES FOR WALL, CEILING INSTALLATION. VERSION: EMERGENCY RUN TIME 60 MINUTES, WHEN POWER IS RESTORED, THE BATTERY RECHARGES AUTOMATICALLY. LED: POWER FACTOR >0.92, MAINTENANCE 50.000h.	WALL, CEILING MOUNTED
	230	40W 4400 Lm 4000K	LED RECESSED MODULAR LIGHTING FIXTURES WITH A VERY SLENDER DESIGN AND HIGH-EFFICIENCY 4000K LED SOURCES. HOUSING: GALVANIZED STEEL SHEET, AND FRAME IN ALUMINUM. DIFFUSER: IN PRISMATIC PLASTIC WITH HIGH THERMAL TRANSMITTANCE. WARRANTY FOR 5 YEARS, UGR<19, LOW FLICKER, POWER FACTOR>0.95 LED: MAINTENANCE 50.000h, IP 40. EM (EMERGENCY) LAMP POWER KIT COMPLETE WITH CONNECTORS.	RECESSED (60X60)

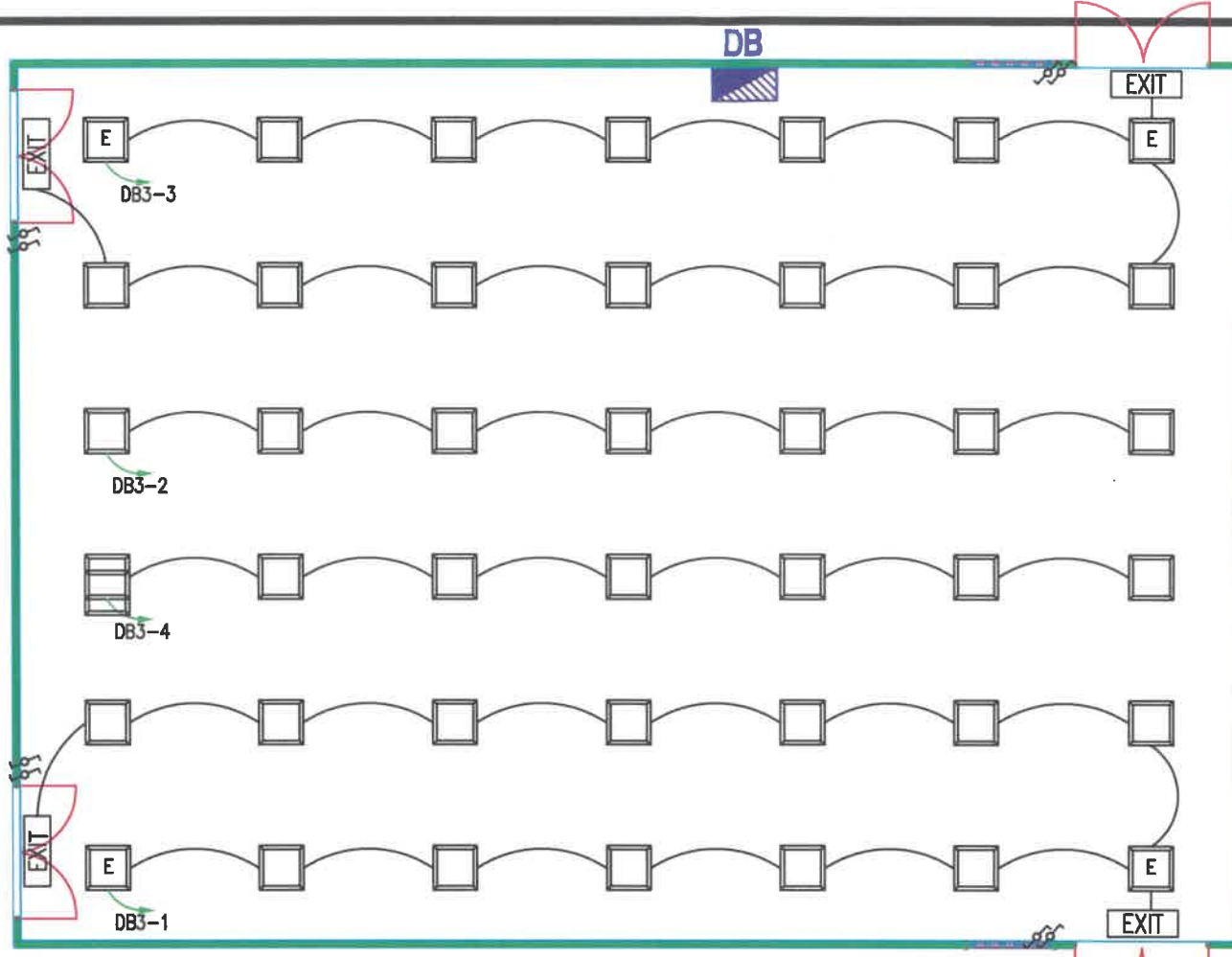


AC SYSTEM

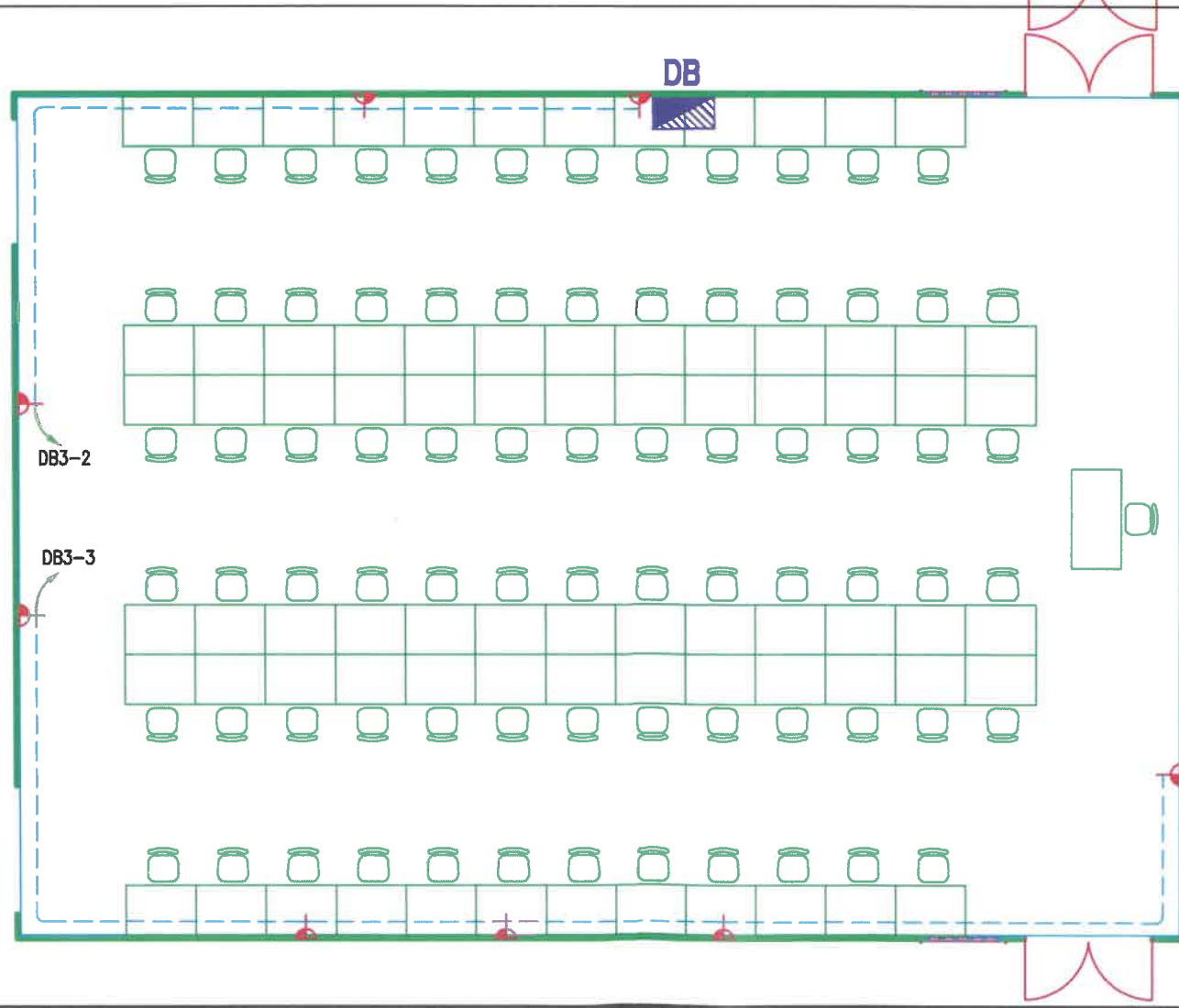
Computer Labs

D006

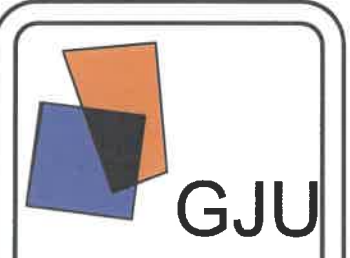
Project	Sheet
Date	9
Scale	N.T.S



LIGHTING SYSTEM



AS-BUILT POWER

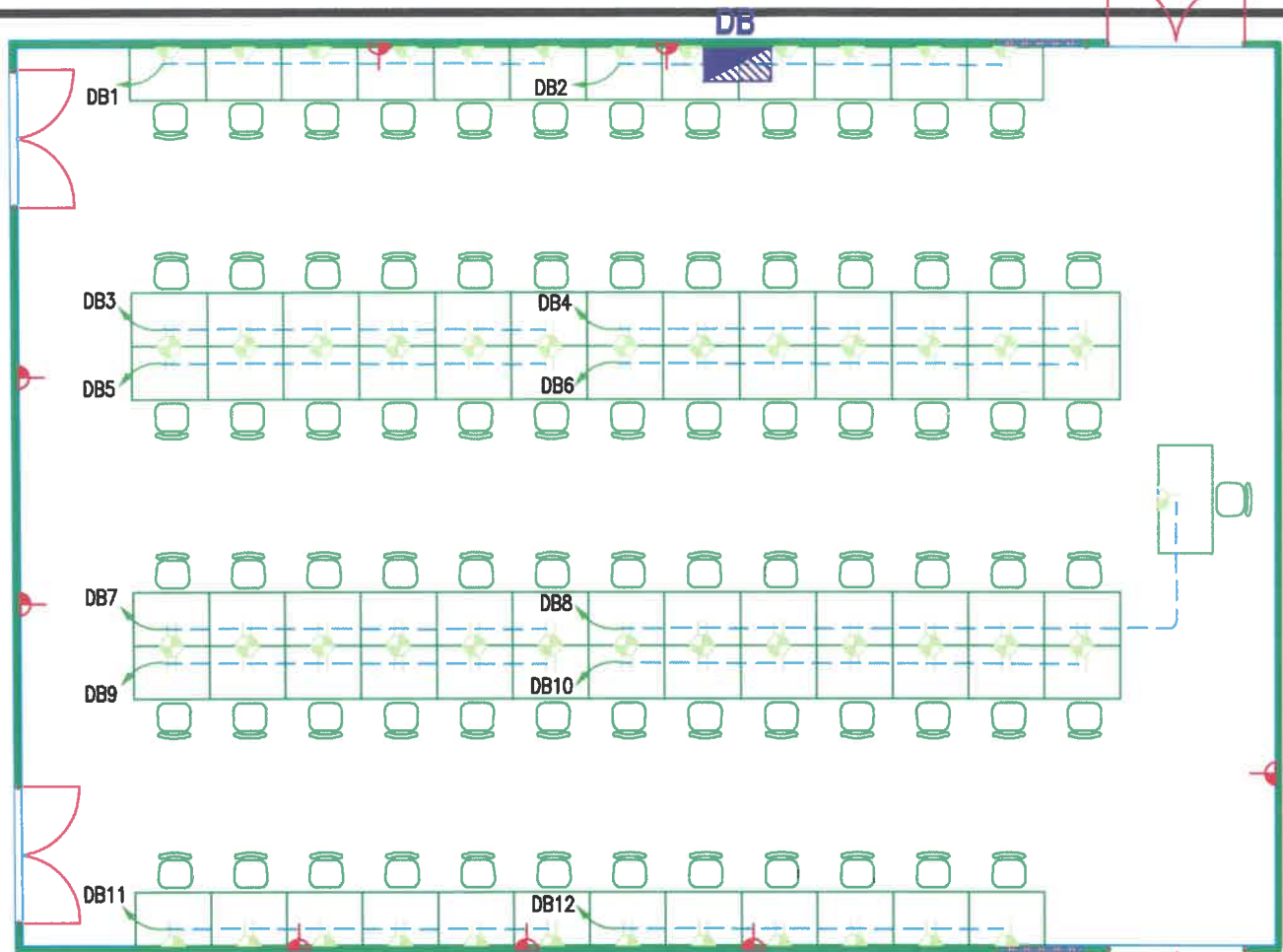


Computer Labs

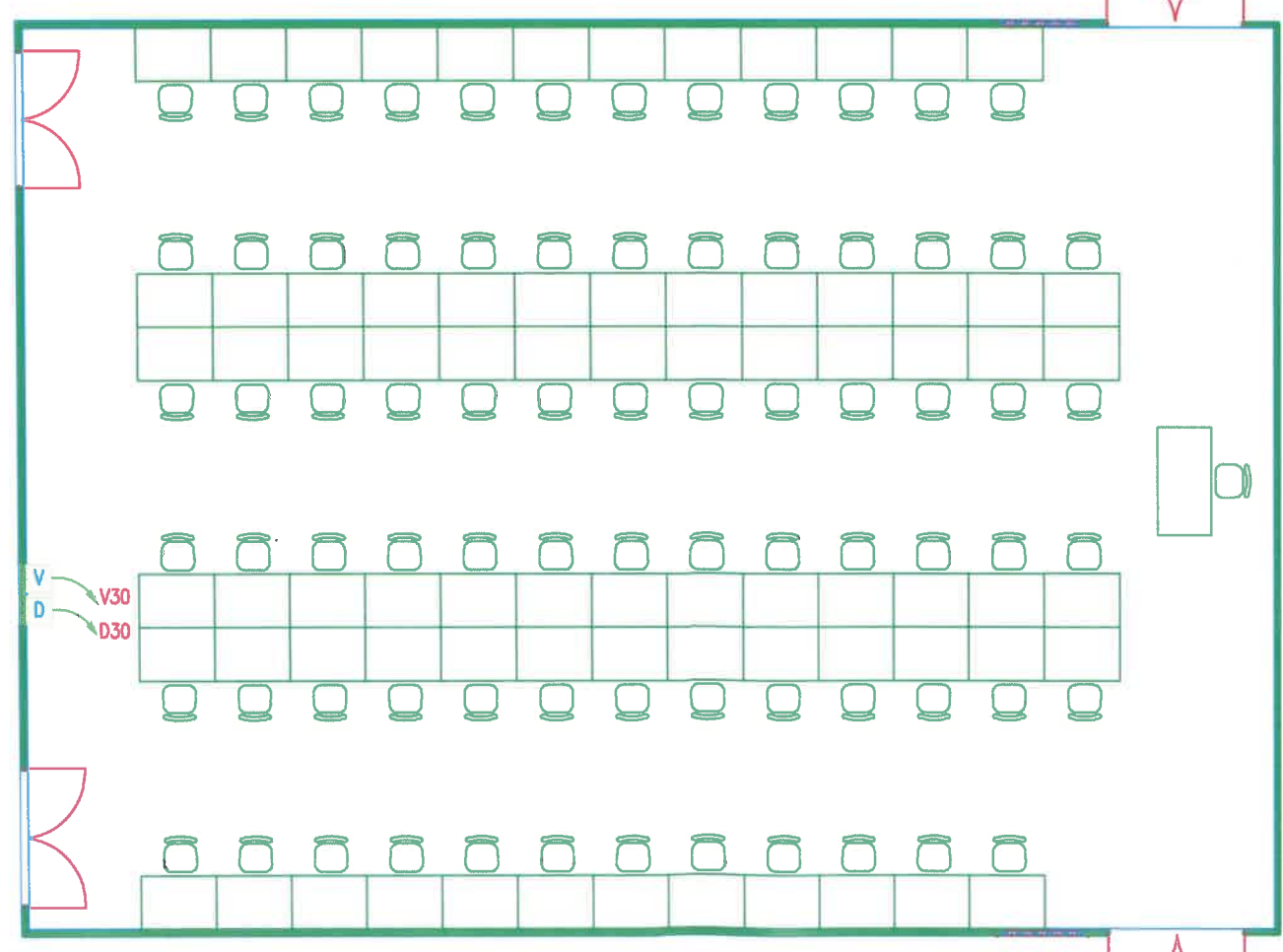
D006

Project	Sheet
Date	10
Scale	N.T.S





POWER SYSTEM



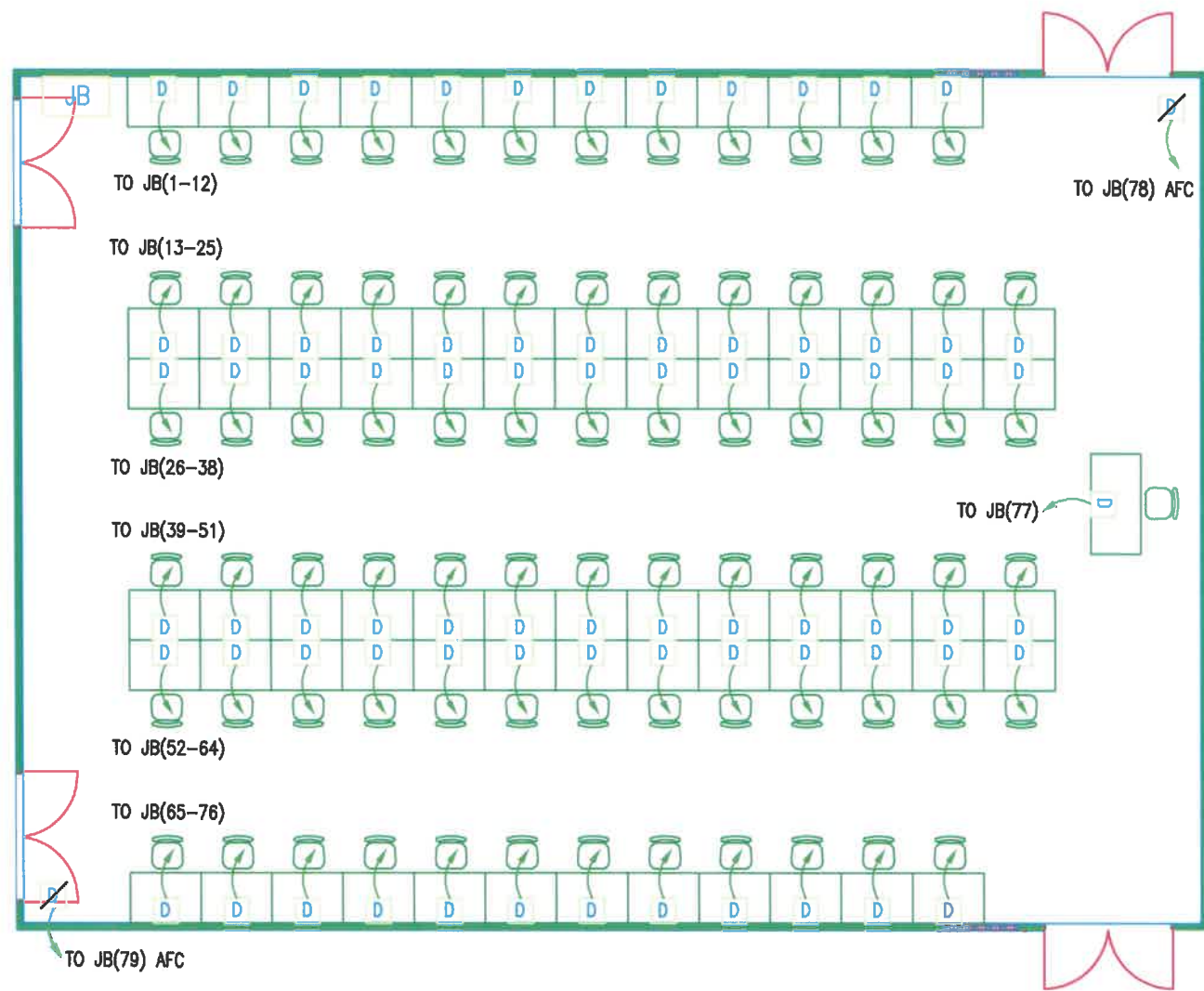
AS-BUILT DATA



Computer Labs

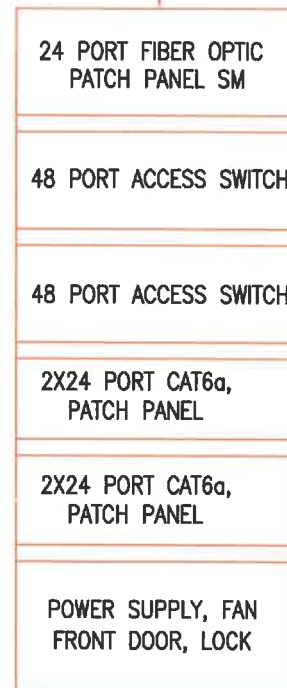
D006

Project	Sheet
Date	11
Scale	N.T.S



DATA SYSTEM

12 CORE SM ARMORED FIBER OPTIC CABLE
FROM COMPUTER CENTER (BUILDING A)



DR LAB.D (24U)
79 RJ45
ELECTRICAL ROOM




1x4P FTP CAT6a
PVC CONDUIT AND TRUNKS

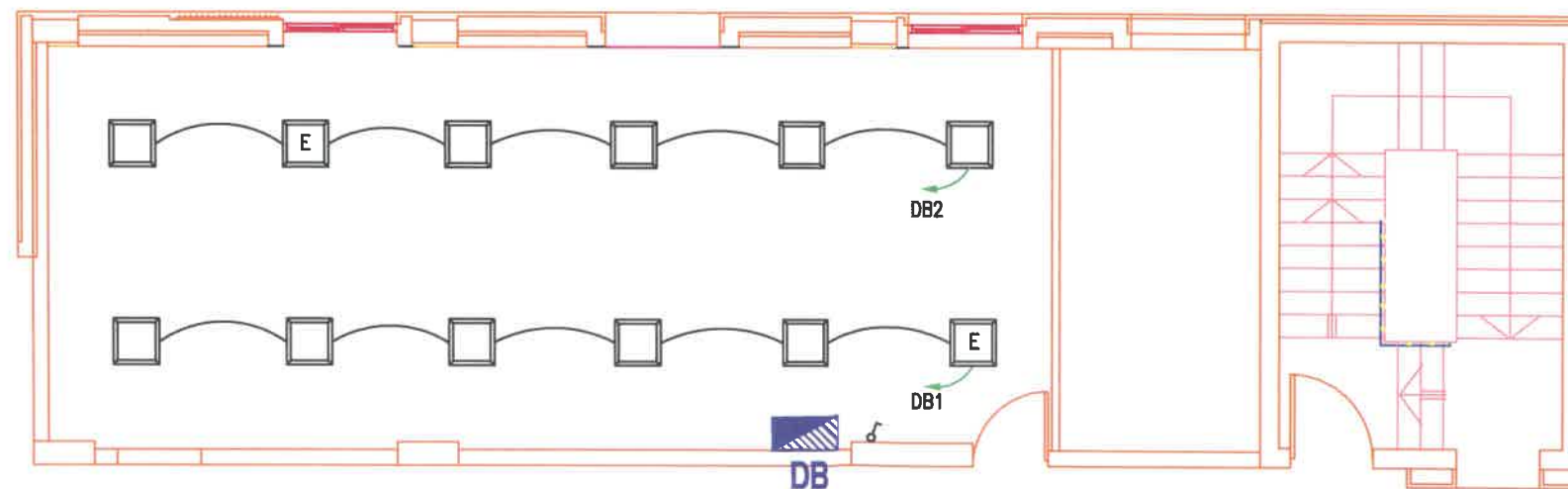


Computer Labs

D006

Project	Sheet
Date	12
Scale	
N.T.S	

SYMBOL	VOLTS	WATTS	DESCRIPTION	MOUNTING TYPE
	230	40W 4400 Lm 4000K	LED RECESSED MODULAR LIGHTING FIXTURES WITH A VERY SLENDER DESIGN AND HIGH-EFFICIENCY 4000K LED SOURCES. HOUSING: GALVANIZED STEEL SHEET, AND FRAME IN ALUMINUM. DIFFUSER: IN PRISMATIC PLASTIC WITH HIGH THERMAL TRANSMITTANCE. WARRANTY FOR 5 YEARS, UGR<19, LOW FLICKER, POWER FACTOR>0.95 LED: MAINTENANCE 50.000h, IP 40.	RECESSED (60X60)
	230	40W 4400 Lm 4000K	LED RECESSED MODULAR LIGHTING FIXTURES WITH A VERY SLENDER DESIGN AND HIGH-EFFICIENCY 4000K LED SOURCES. HOUSING: GALVANIZED STEEL SHEET, AND FRAME IN ALUMINUM. DIFFUSER: IN PRISMATIC PLASTIC WITH HIGH THERMAL TRANSMITTANCE. WARRANTY FOR 5 YEARS, UGR<19, LOW FLICKER, POWER FACTOR>0.95 LED: MAINTENANCE 50.000h, IP 40. EM (EMERGENCY) LAMP POWER KIT COMPLETE WITH CONNECTORS.	RECESSED (60X60) 3 HOURS
	230	20W 2000 Lm 4000K	LED RECESSED COMPACT LIGHTING FIXTURES WITH DIA CAST ALUMINUM BODY AND WITH SPRING CLIPS FOR RECESSED MOUNTING. DIFFUSER: HIGH TEMPERATURE RESISTANT THERMOPLASTIC MATERIAL. UGR<19, LOW FLICKER, POWER FACTOR>0.95, CRI>95, UV-STABILIZED COATING. LED: MAINTENANCE 50.000h, IP 20.	RECESSED (Ø20cm)

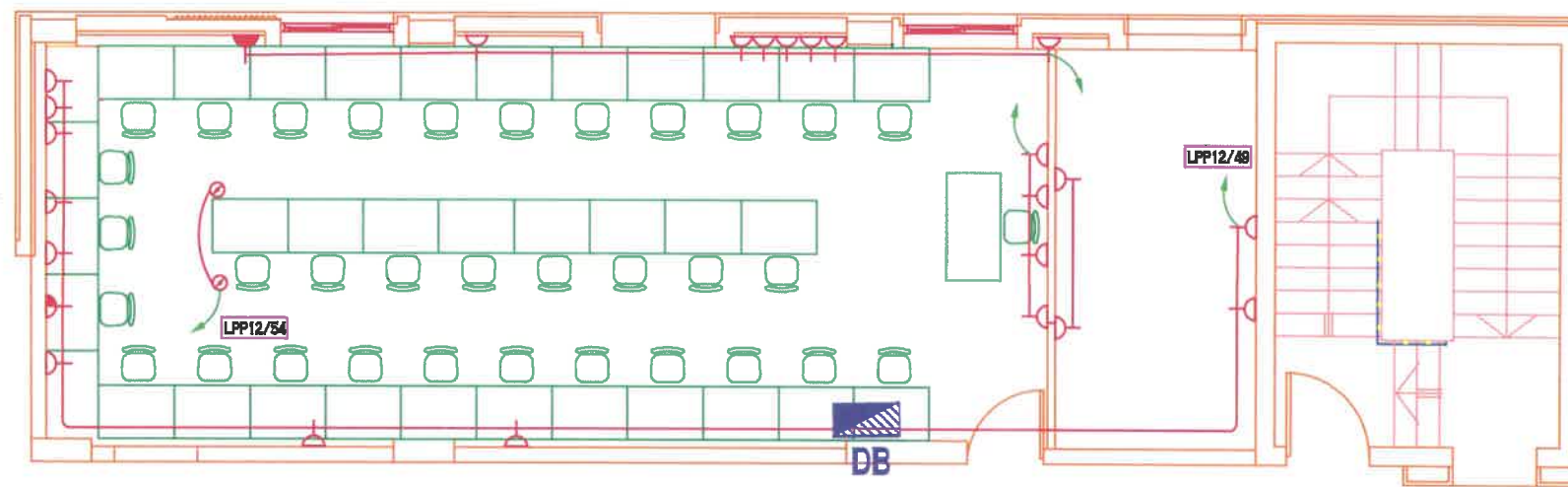


LIGHTING SYSTEM

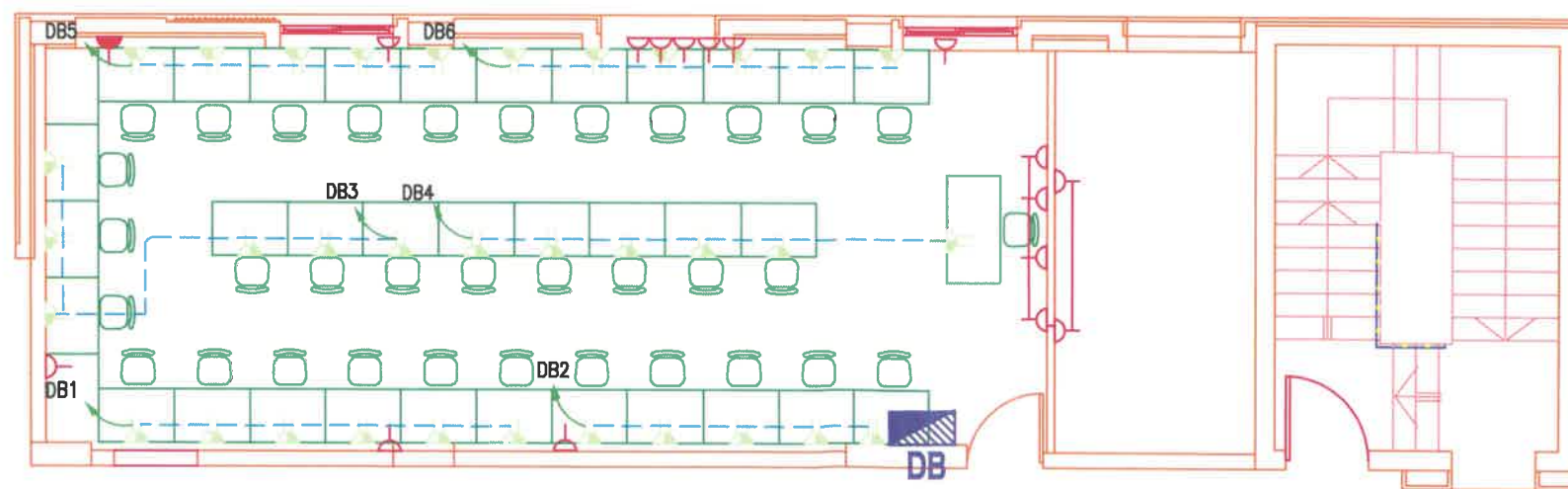
Computer Labs

B002

Project	Sheet
Date	13
Scale	
N.T.S	



AS-BUILT POWER



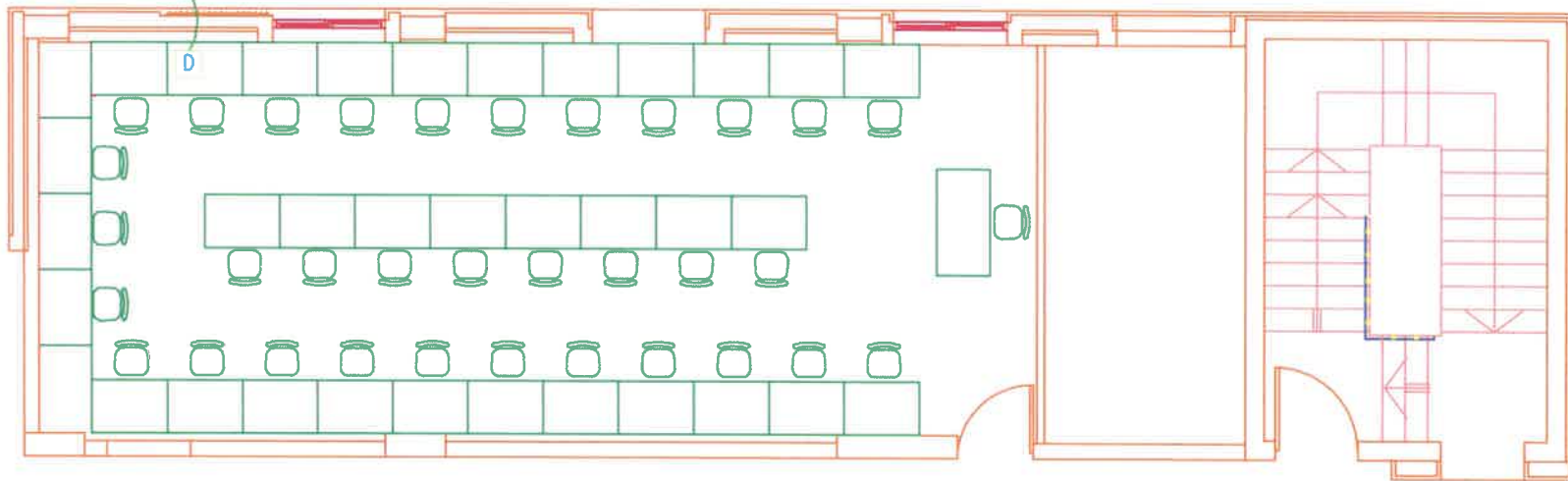
POWER SYSTEM

Computer Labs

B002

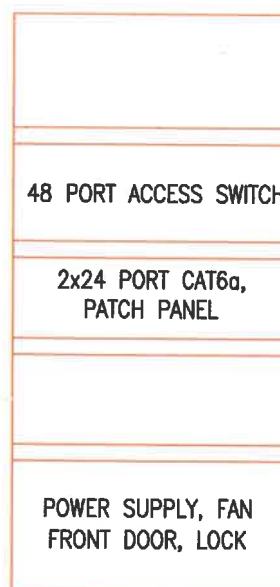
Project	Sheet
Date	14
Scale	
N.T.S	

TO MDR(B)
1X2P UTP CAT3



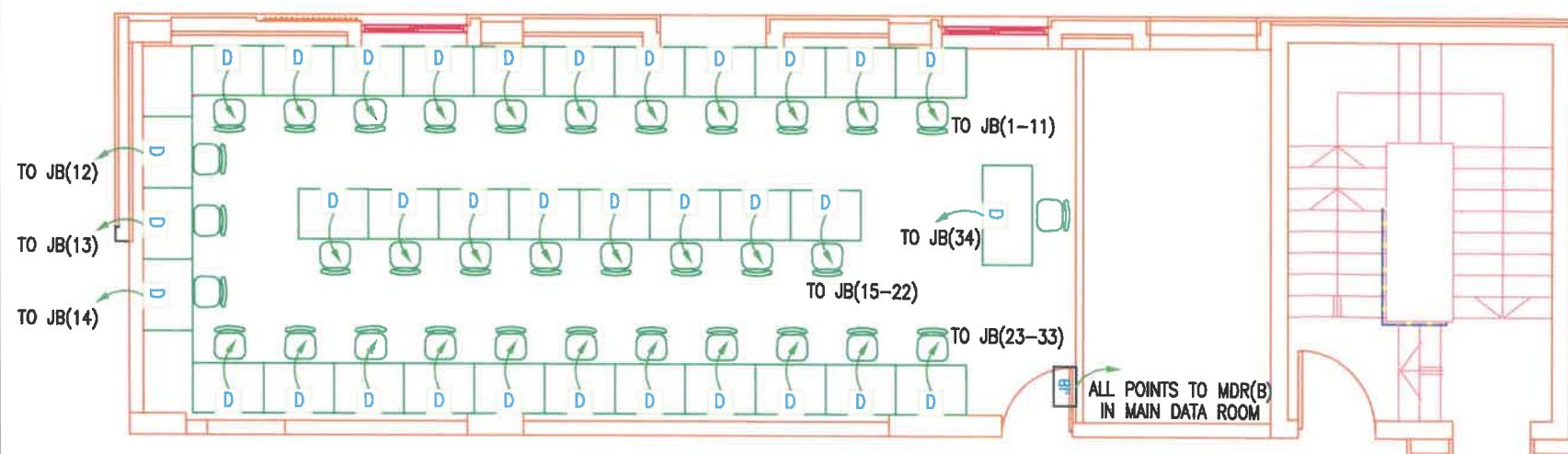
AS-BUILT DATA

D - 34 No5 - D



MDR SERVER ROOM (42U)

1x4P FTP CAT6a
PVC CONDUIT



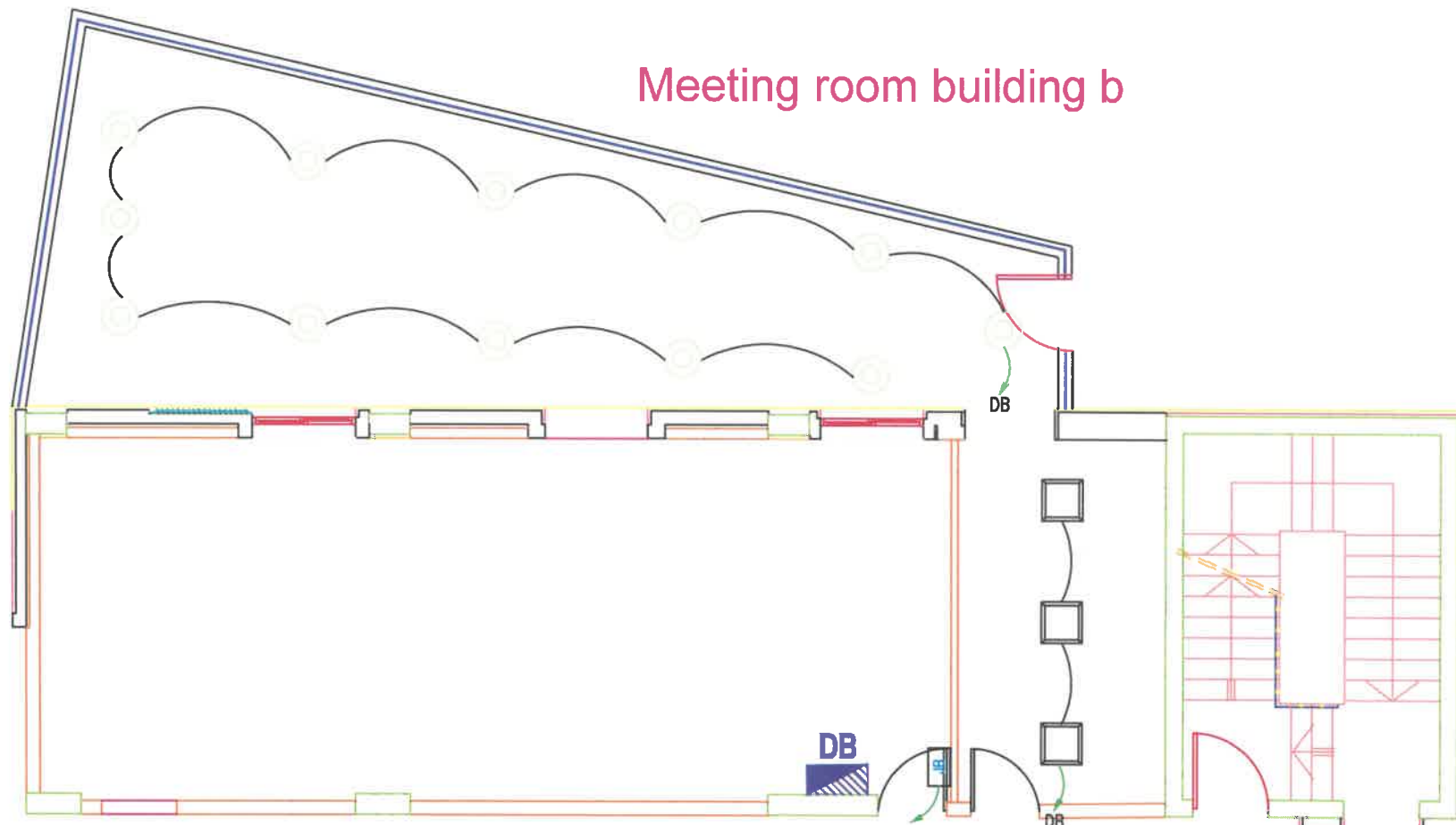
DATA SYSTEM

Computer Labs

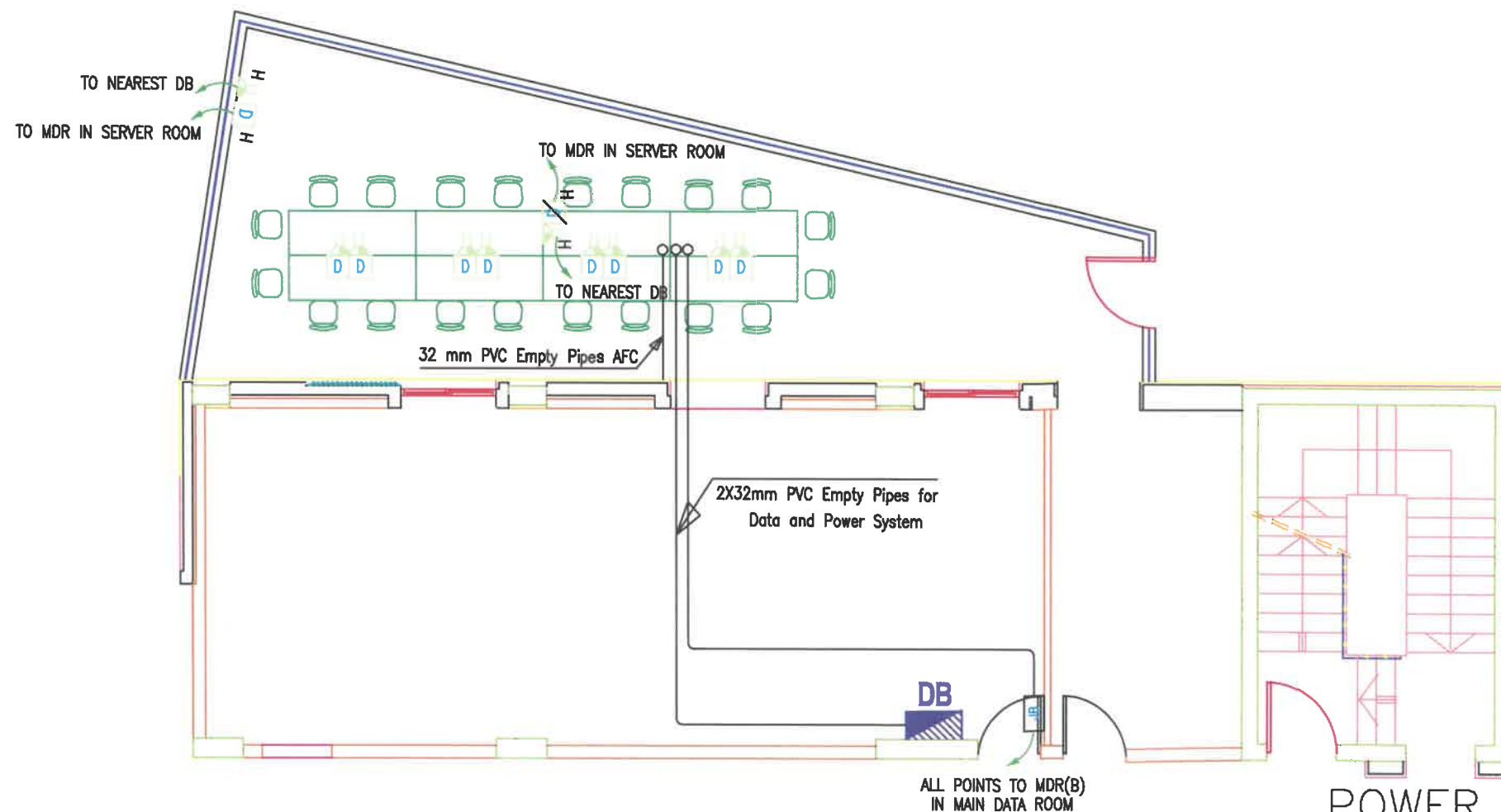
B002

Project	Sheet
Date	15
Scale	N.T.S

Meeting room building b



AS-BUILT LIGHTING SYSTEM

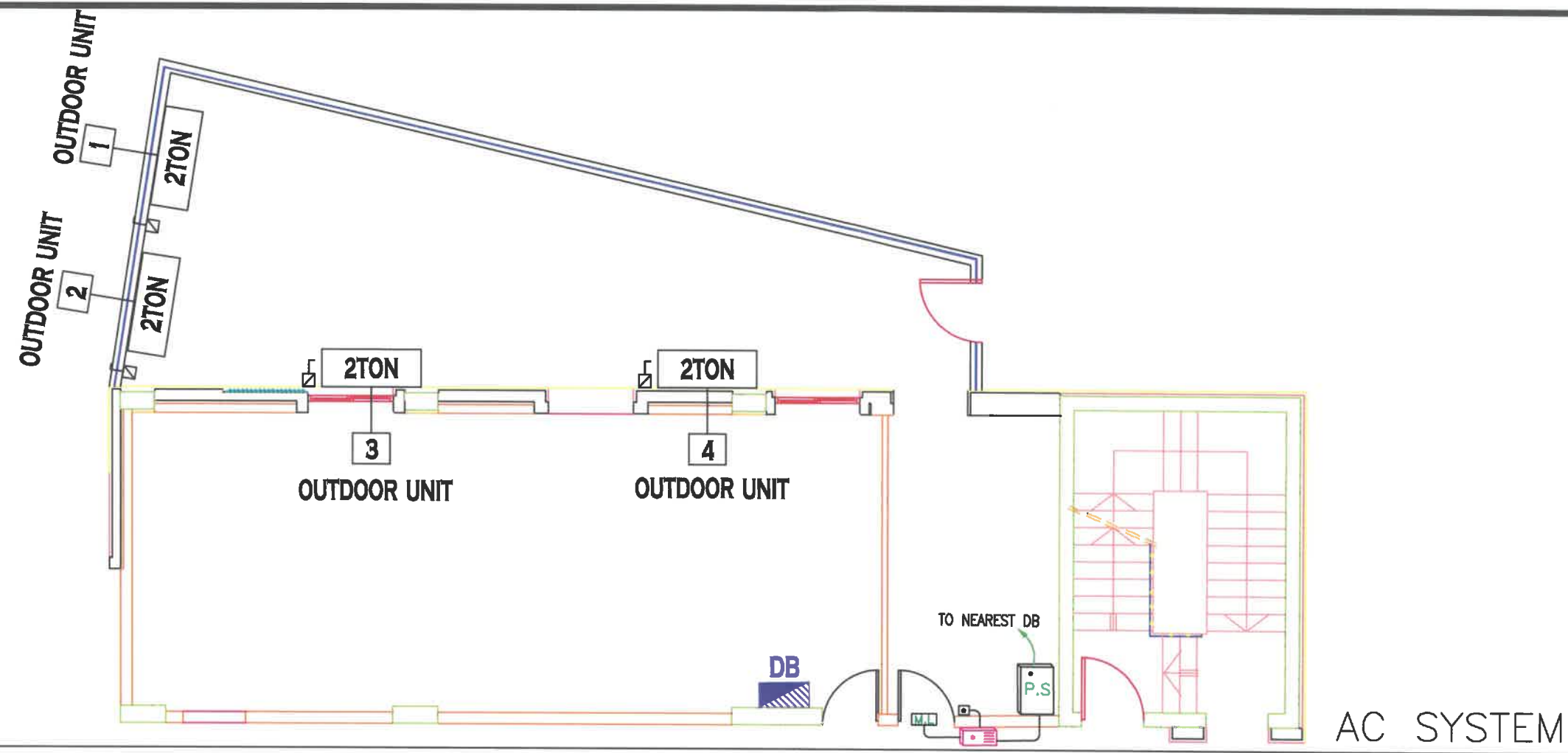


POWER AND DATA SYSTEM

Computer Labs

Meeting room
in Building B

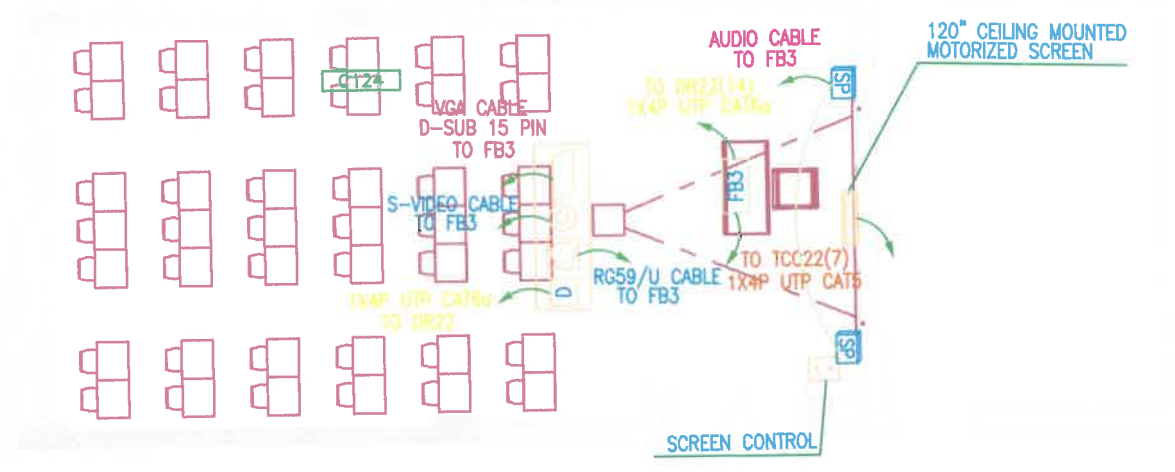
Project	Sheet
Date	16
Scale	N.T.S



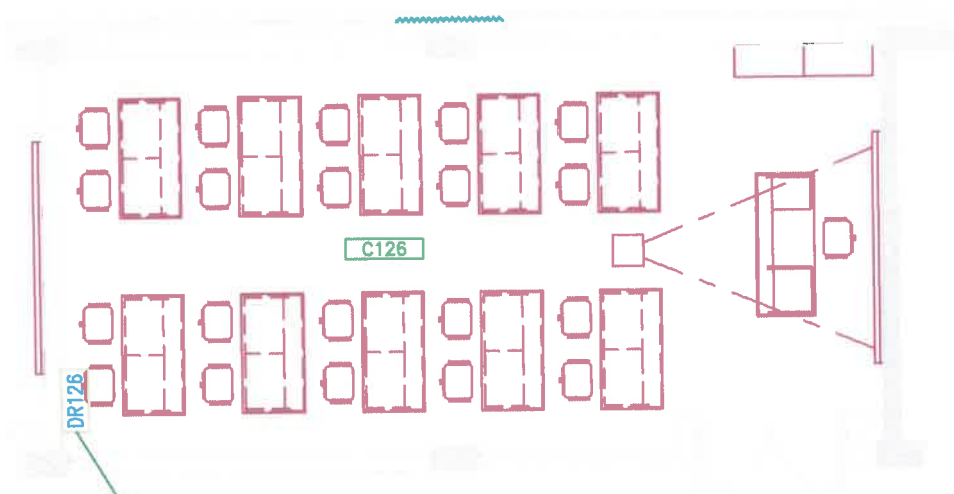
Computer Labs

B002

Project	Sheet
Date	17
Scale	N.T.S

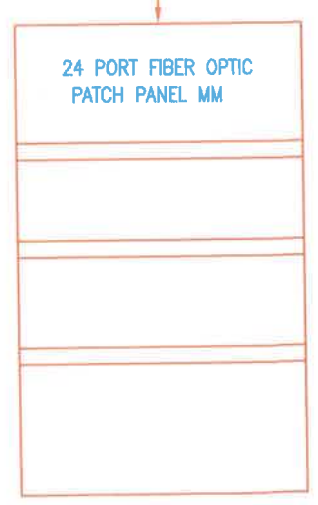


AS-BUILT DATA SYSTEM



DATA SYSTEM

8 CORE MM FIBER OPTIC CABLE
LAID ON CABLE TRAY TO MAIN DATA RACK IN BUILDING C (C235-SERVER ROOM)

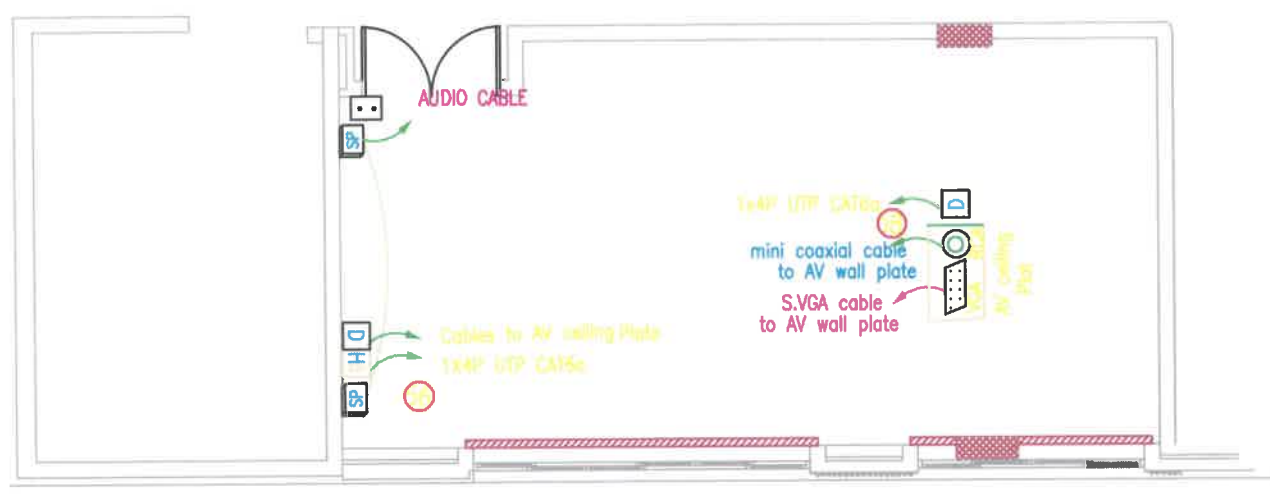


DR126 LAB.C126 (6U) CHANGE TO (9U)

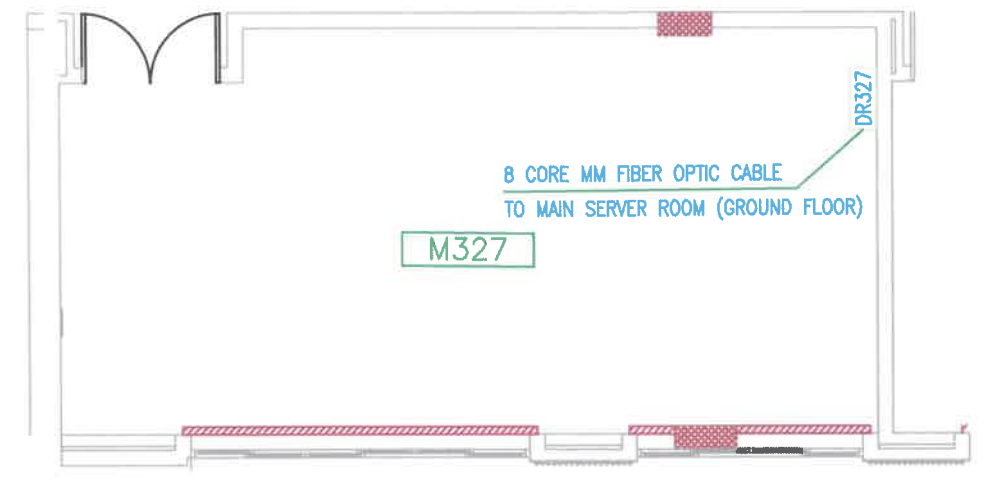
Computer Labs

C126

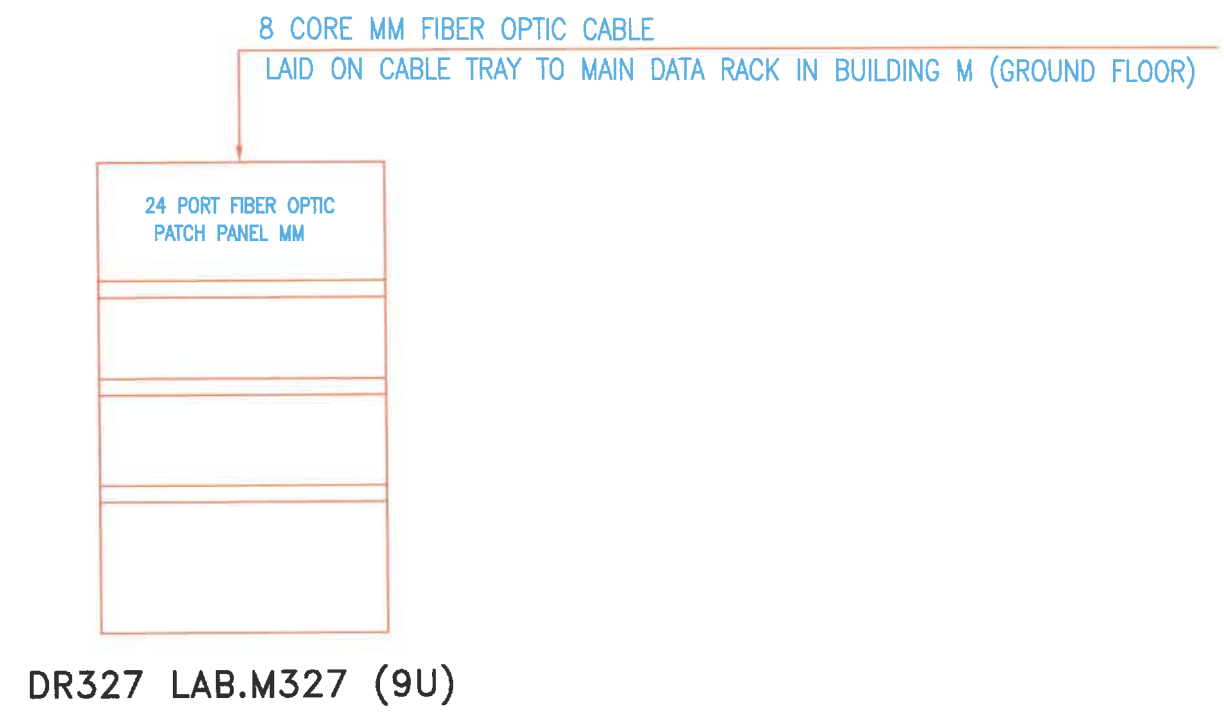
Project	Sheet
Date	18
Scale	N.T.S



AS-BUILT DATA SYSTEM



DATA SYSTEM

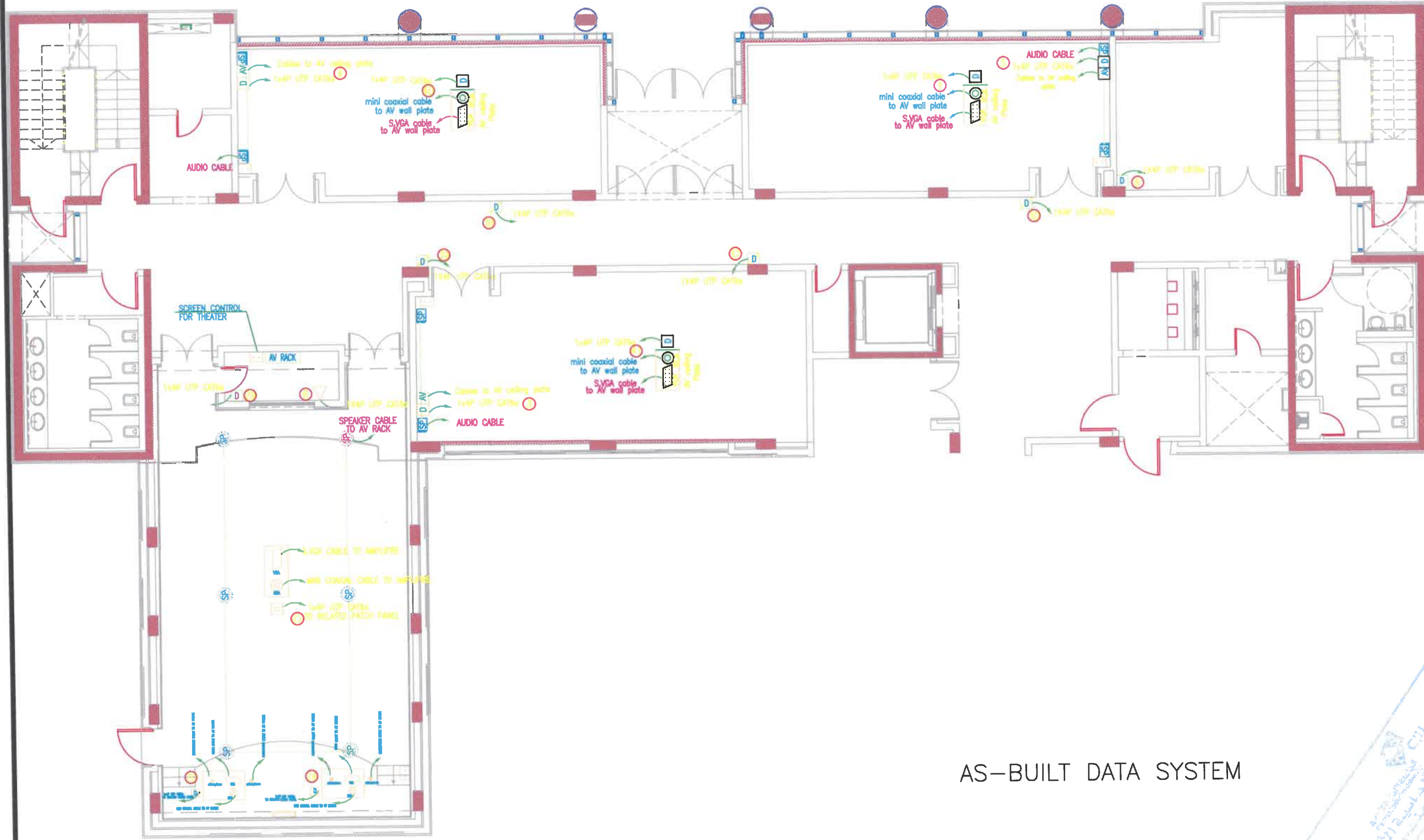


Computer Labs

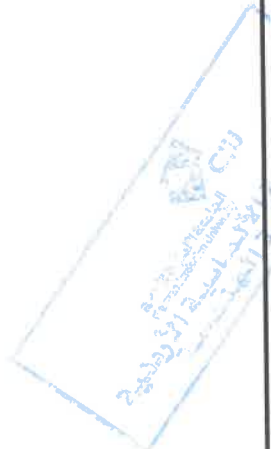
M327

Project	Sheet
Date	19
Scale	N.T.S





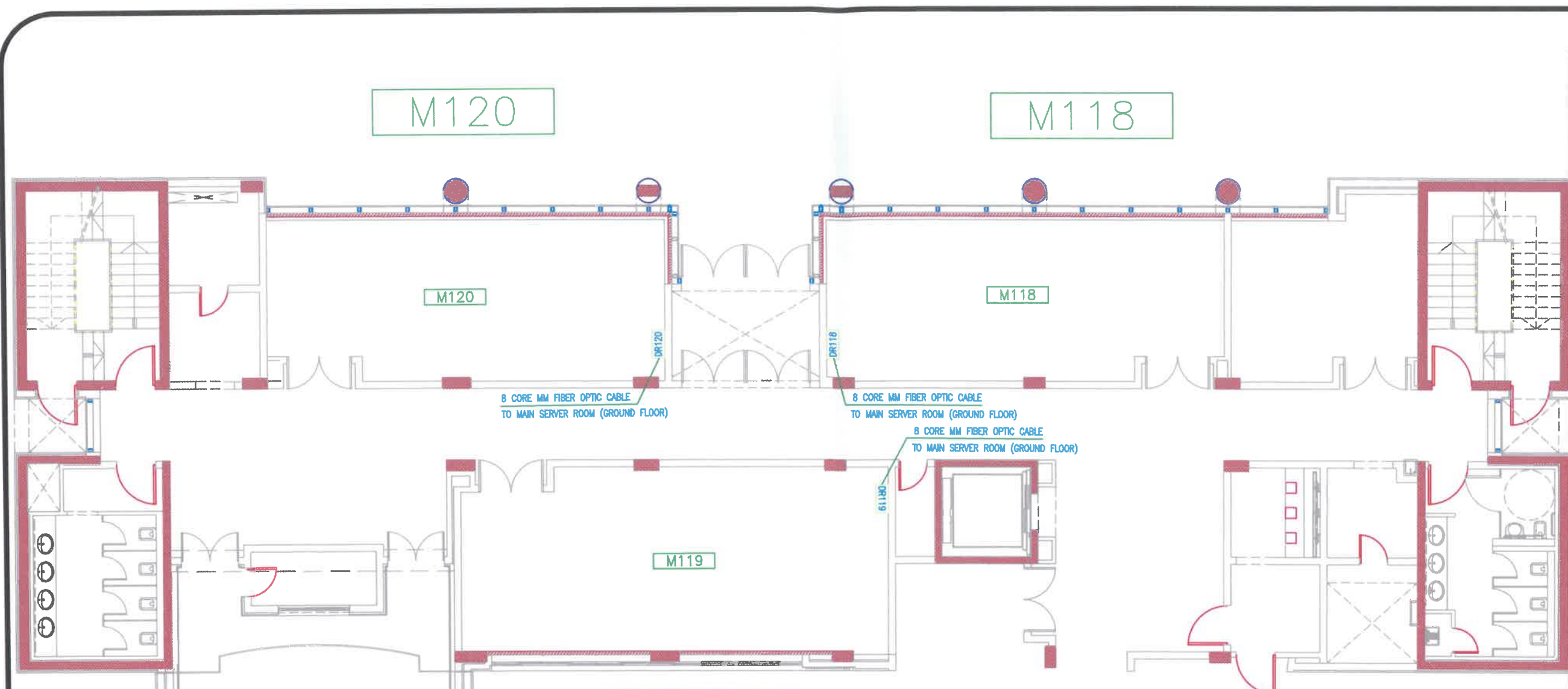
AS-BUILT DATA SYSTEM



Computer Labs

M118
M119
M120

Project	Sheet
Date	20
Scale	N.T.S



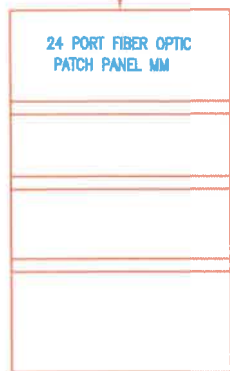
8 CORE MM FIBER OPTIC CABLE
TO MAIN SERVER ROOM (GROUND FLOOR)

8 CORE MM FIBER OPTIC CABLE
TO MAIN SERVER ROOM (GROUND FLOOR)

8 CORE MM FIBER OPTIC CABLE
TO MAIN SERVER ROOM (GROUND FLOOR)

DATA SYSTEM

8 CORE MM FIBER OPTIC CABLE
LAID ON CABLE TRAY TO MAIN DATA RACK IN BUILDING M (GROUND FLOOR)



- DR120 LAB.M120 (9U)
- DR119 LAB.M119 (9U)
- DR118 LAB.M118 (9U)

Computer Labs

M118
M119
M120

Project	Sheet
Date	21
Scale	N.T.S