

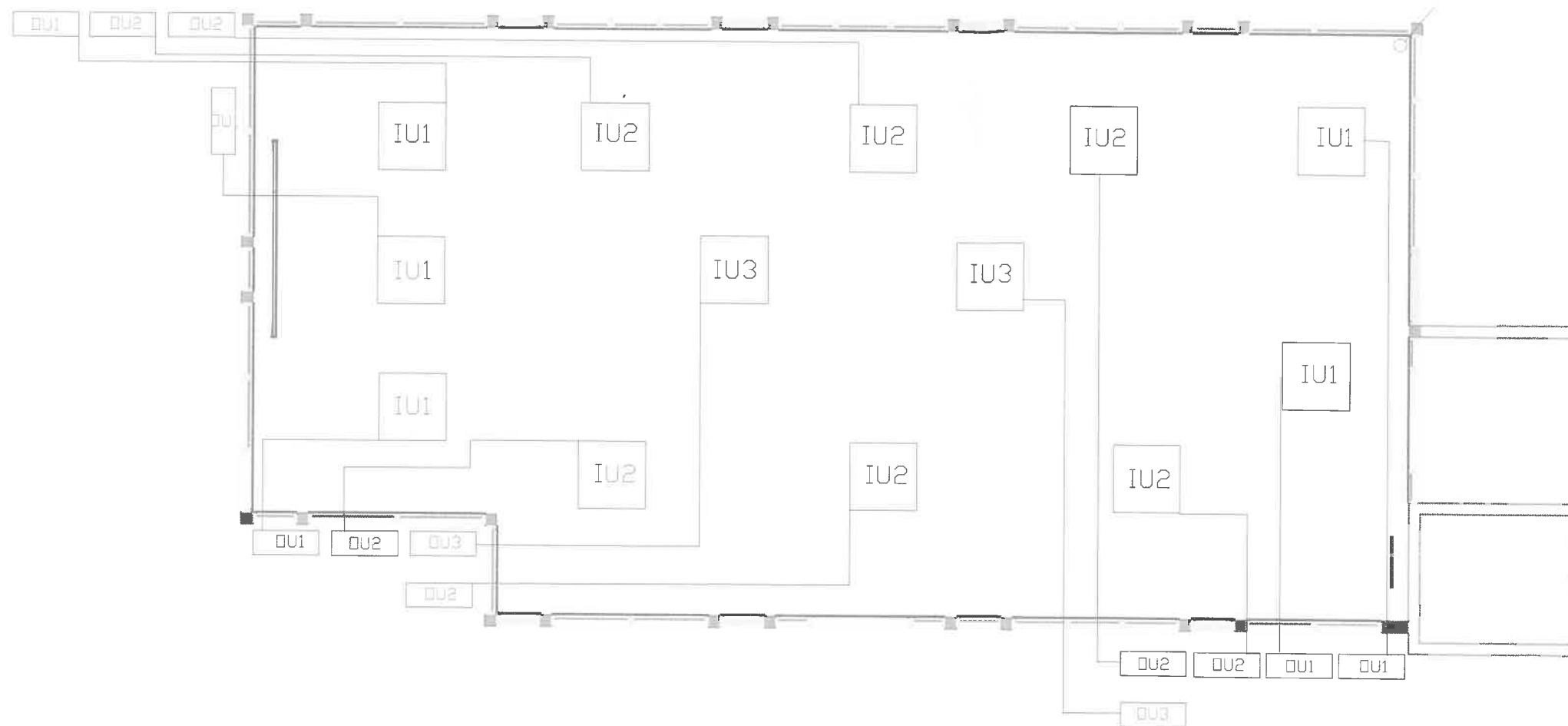
GJU /SABE
GLASS BOX

GJU/SABE
SABE Glass Box

Project Number
Date
Drawn by
Checked by
Ceiling
Scale

GJU /SABE
GLASS BOX

Existing Drain



AC	QTY	IU	OU
1	5	AC071MN4DKH	AC071MXADKH
2	6	AC100MN4DKH	AC100MAXADKH
3	2	AC140MN4DKH	AC140MAXADKH

GJU/SABE

SABE Glass Box

Project Number

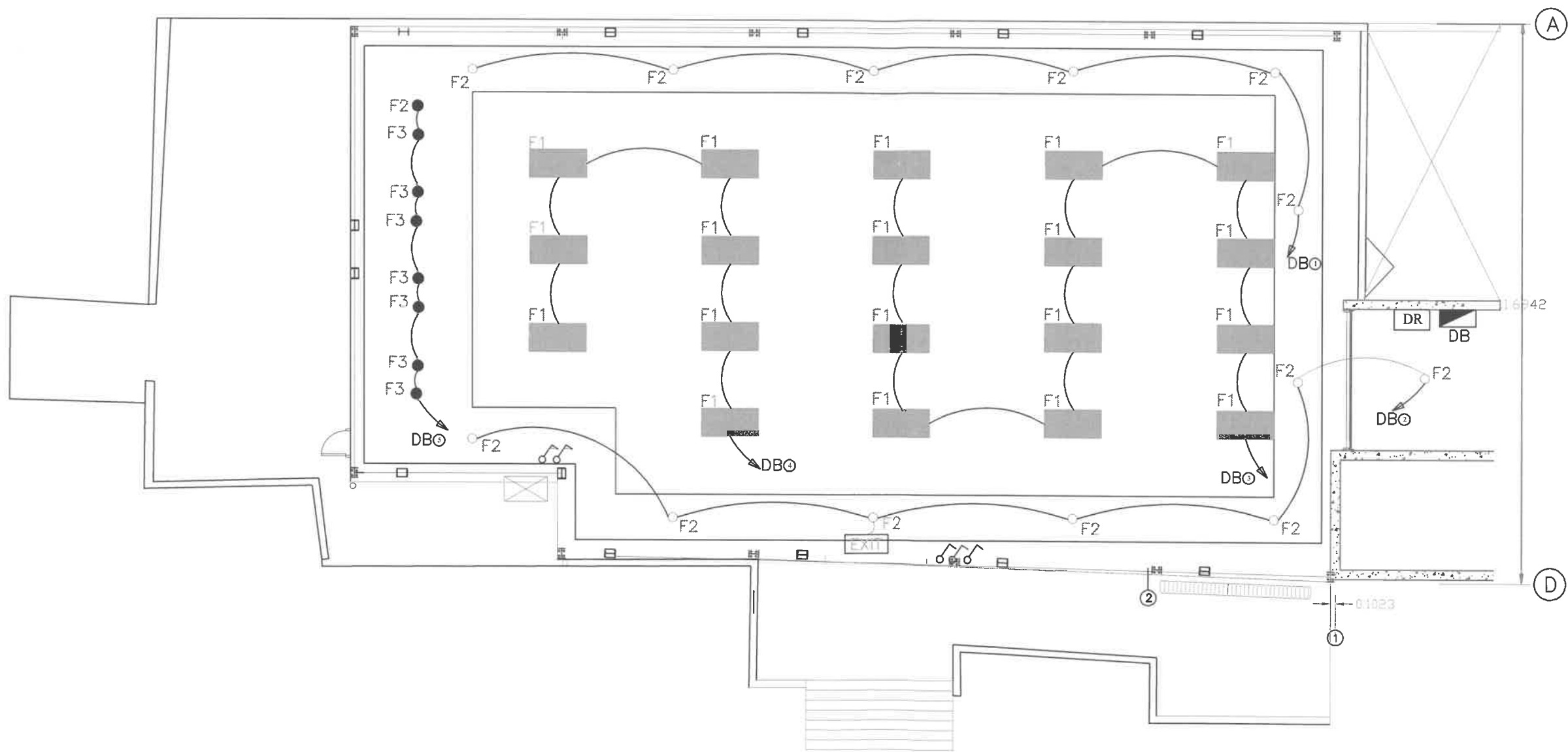
Date

Drawn by

Checked by

AC Units Location Plan

GJU /SABE
GLASS BOX



GJU/SABE

SABE Glass Box

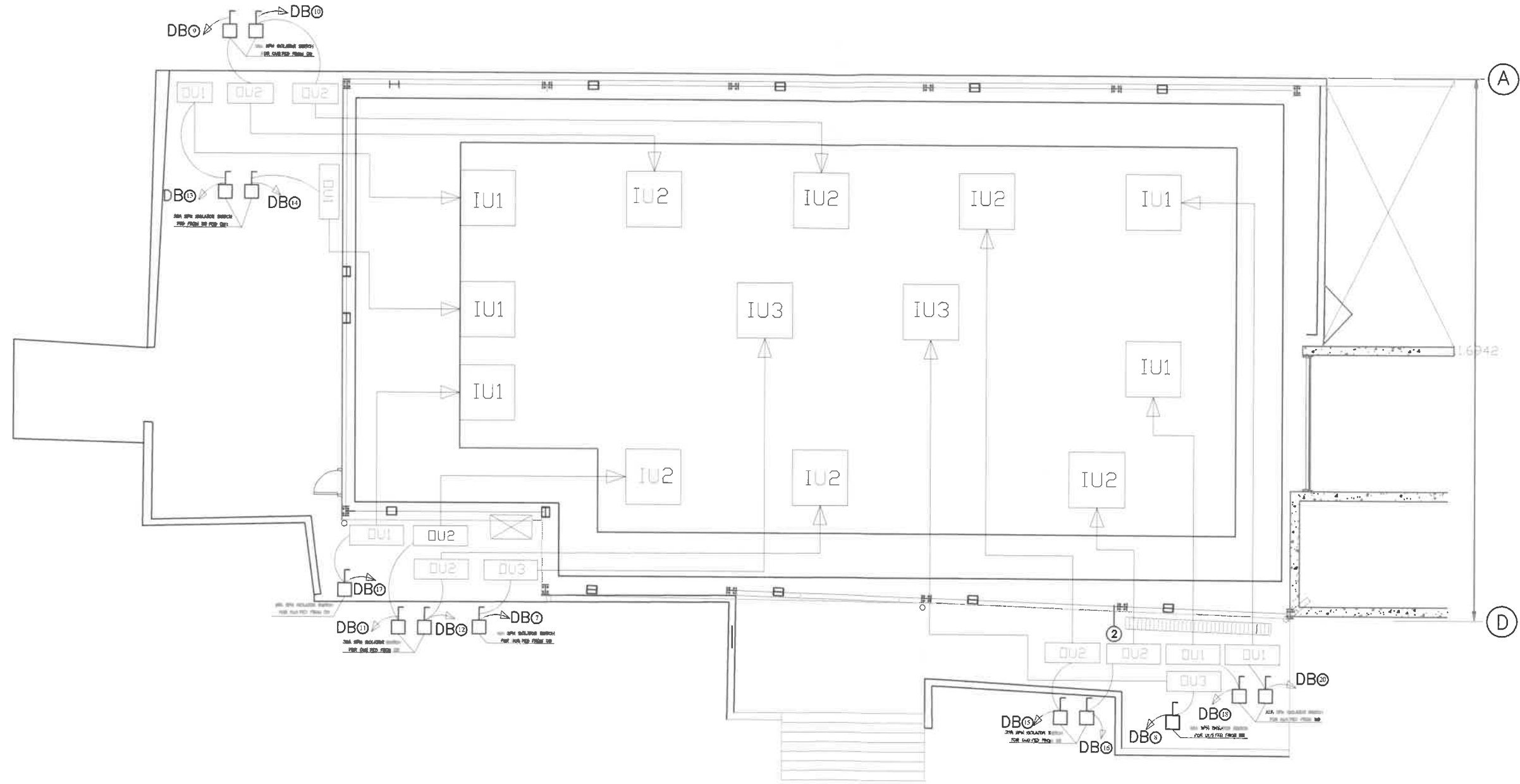
Project Number

Date

Drawn by

Checked by

GJU /SABE
GLASS BOX



GJU/SABE

SABE Glass Box

Project Number

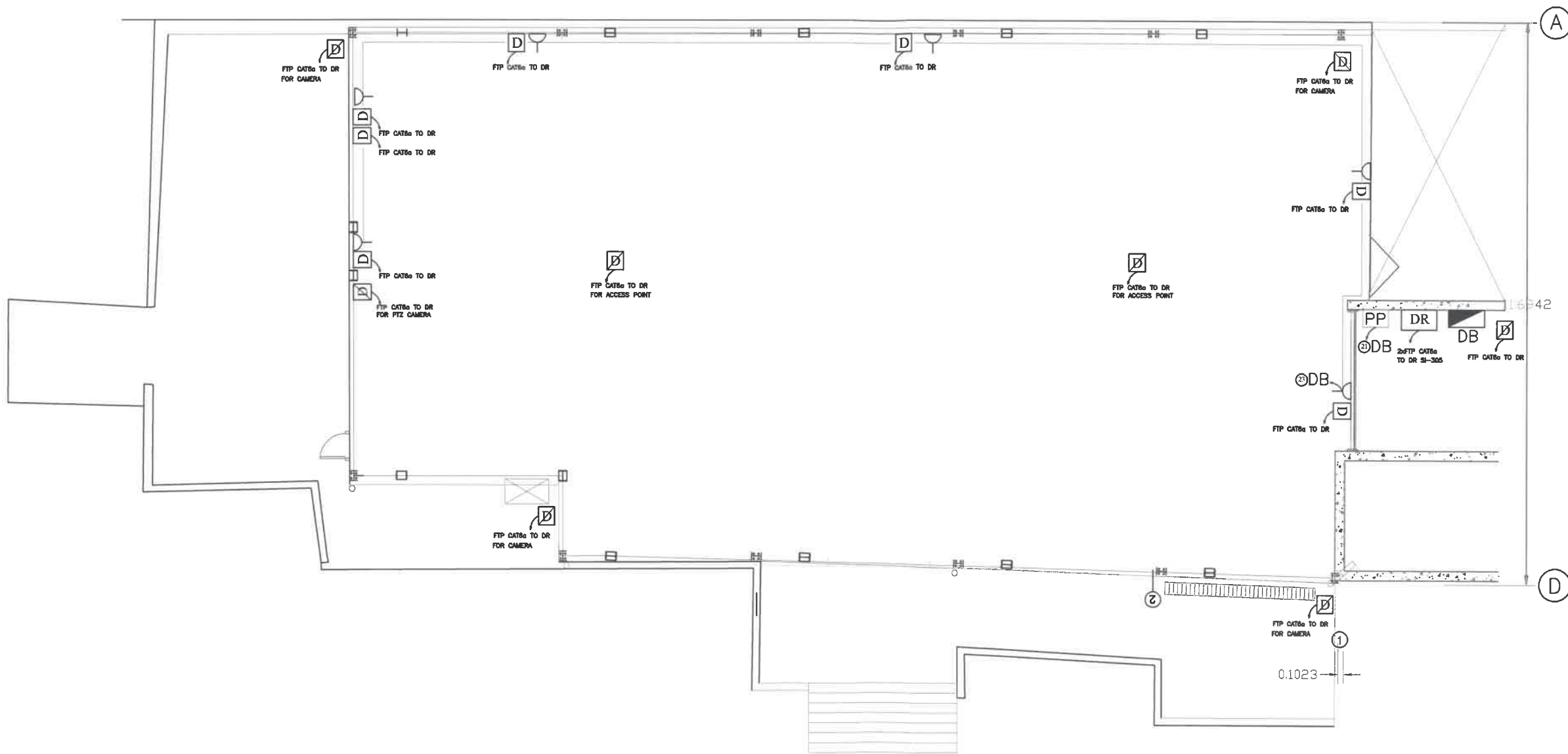
Date

Drawn by

Checked by

Handwritten notes and a signature in blue ink, partially obscured by a stamp.

GJU /SABE
GLASS BOX



GJU/SABE





SABE Glass Box


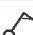



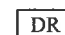

Project Number

Date

Drawn by

Checked by

SYMBOL	FIX. REF.	VOLTS	WATTS	DESCRIPTION	MOUNTING TYPE
	F1	230	67W 7350 Lm 4000K	LED RECESSED MODULAR LIGHTING FIXTURES WITH A VERY SLENDER DESIGN AND HIGH-EFFICIENCY 4000K LED SOURCES. HOUSING: GALVANIZED STEEL SHEET, AND FRAME IN ALUMINUM. DIFFUSER: IN PRISMATIC PLASTIC WITH HIGH THERMAL TRANSMITTANCE. DIMMING STANDARD VERSION, UGR<19, LOW FLICKER, POWER FACTOR>0.95 LED: MAINTENANCE 50.000h, IP 20.	RECESSED (60X120)
	F2	230	19W 2315 Lm 4000K	HOUSING: DIE CAST ALUMINUM COMPLETE WITH SPRING CLIPS FOR RECESSED MOUNTING. DIFFUSER: HIGH TEMPERATURE RESISTANT THERMO-PLASTIC MATERIAL. COATING: POWER-COATED WITH A UV-RESISTANT POLYESTER EPOXY PAINT, UGR<19, LOW FLICKER, POWER FACTOR>0.95, CRI 95 LED: MAINTENANCE 50.000h, IP 20.	RECESSED (Ø245)
	F3	230	11W 1270 Lm 4000K	HOUSING: DIE CAST ALUMINUM COMPLETE WITH SPRING CLIPS FOR RECESSED MOUNTING. DIFFUSER: HIGH TEMPERATURE RESISTANT THERMO-PLASTIC MATERIAL. COATING: POWER-COATED WITH A UV-RESISTANT POLYESTER EPOXY PAINT, UGR<19, LOW FLICKER, POWER FACTOR>0.95, CRI 95 LED: MAINTENANCE 50.000h, IP 20. DIMMING STANDARD VERSION	RECESSED (Ø180)
		230	8W	HOUSING: IN PLASTIC MATERIAL, REFLECTOR: IN TRANSPARENT PLEXIGLASS. EQUIPMENT: SUPPLIED WITH ACCESSORIES FOR WALL, CEILING INSTALLATION. VERSION: EMERGENCY RUN TIME 60 MINUTES, WHEN POWER IS RESTORED, THE BATTERY RECHARGES AUTOMATICALLY. LED: POWER FACTOR >0.92, MAINTENANCE 50.000h.	WALL, CEILING MOUNTED

	10 AMP. ONE GANG ONE-WAY SWITCH
	1-GANG 2-WAY LED DIMMER SWITCH, WHITE, RAISED SLIM PROFILE, SCREWED FACEPLATE.
	13 AMP. SWITCH SINGLE (DUPLEX) PHASE SOCKET OUTLET
	SINGLE PHASE DISCONNECTING SWITCH
	DISTRIBUTION BOARD
	DATA CABENET
	DATA OUTLET/ COMPUTERS, DATA OUTLET/ COMPUTERS ABOVE F.C

GJU /SABE
GLASS BOX

GJU/SABE

SABE Glass Box

Project Number

Date

Drawn by

Checked by

GJU /SABE
GLASS BOX

PANEL NAME : DB																								MOUNTED : SURFACE MOUNTED																								400V 3 PHASE: 4W & G 4X50 + 1X25 CU/XLPE/PVC CABLE																								TPN DB IP41 : 8 WAY																							
LOCATION : GLASS BOX 3																																																																																															
Size of Cond. (mm)	Size of Wire (mm2)	CT No	Description	Phase (R) (W)	Phase (Y) (W)	Phase (B) (W)	PH	AMP Trip	AMP Frame	BR No.	R	Y	B	BR No.	AMP Frame	AMP Trip	PH	Phase (R) (W)	Phase (Y) (W)	Phase (B) (W)	Description	CT No.	Size of Wire (mm2)	Size of Cond. (mm)																																																																							
20	2X2.5+2.5	1	LGT	115			R1	10	100	1	X			2	100	10	R2	115			LGT	2	2X2.5+2.5	20																																																																							
20	2X2.5+2.5	3	LGT		804		Y1	10	100	3		X		4	100	10	Y2		470		LGT	4	2X2.5+2.5	20																																																																							
20	2X2.5+2.5	5	LGT			88	B1	10	100	5			X	6	100	10	B2			0	SPARE	6		20																																																																							
20	2x6+6	7	AC	7000			R3	32	100	7	X			8	100	32	R4	7000			AC	8	2x6+6	20																																																																							
20	2x6+6	9	AC		5300		Y3	25	100	9		X		10	100	25	Y4		5300		AC	10	2x6+6	20																																																																							
20	2x6+6	11	AC			5300	B3	25	100	11			X	12	100	25	B4			5300	AC	12	2x6+6	20																																																																							
20	2x4+4	13	AC	4400			R5	25	100	13	X			14	100	25	R6	4400			AC	14	2x4+4	20																																																																							
20	2x6+6	15	AC		5300		Y5	25	100	15		X		16	100	25	Y6		5300		AC	16	2x6+6	20																																																																							
20	2x4+4	17	AC			4400	B5	25	100	17			X	18	100	25	B6			4400	AC	18	2x4+4	20																																																																							
20	2x4+4	19	SKT	0			R7	16	100	19	X			20	100	25	R8	4400			AC	20	2x4+4	20																																																																							
20	2x4+4	21	SKT PP		2500		Y7	16	100	21		X		22	100	16	Y8		0		SPARE	22		20																																																																							
20	2x4+4	23	SKT			1500	B7	16	100	23			X	24	100	16	B8			0	SPARE	24		20																																																																							
connected load (W)				11515	11404	11288					R	Y	B				15915	11070	9700	connected load (W)																																																																											
TCL (KW)				34207			MAIN BREAKER											36685			TCL (KW)																																																																										
TOTAL CONNECTED LOAD =				70.89	KW		120 A,3P,MCCB											Total connected load "R"			27430 W																																																																										
DEMAND FACTOR				0.80	FOR LIGHTING AND POWER CIRCUITS													Total connected load "Y"			22474 W																																																																										
TOTAL DEMAND LOAD =				56.71	KW													Total connected load "B"			20988 W																																																																										
DEMAND CURRENT				104.24	A																																																																																										
CONNECTED CURRENT				115.83	A																																																																																										

GJU/SABE

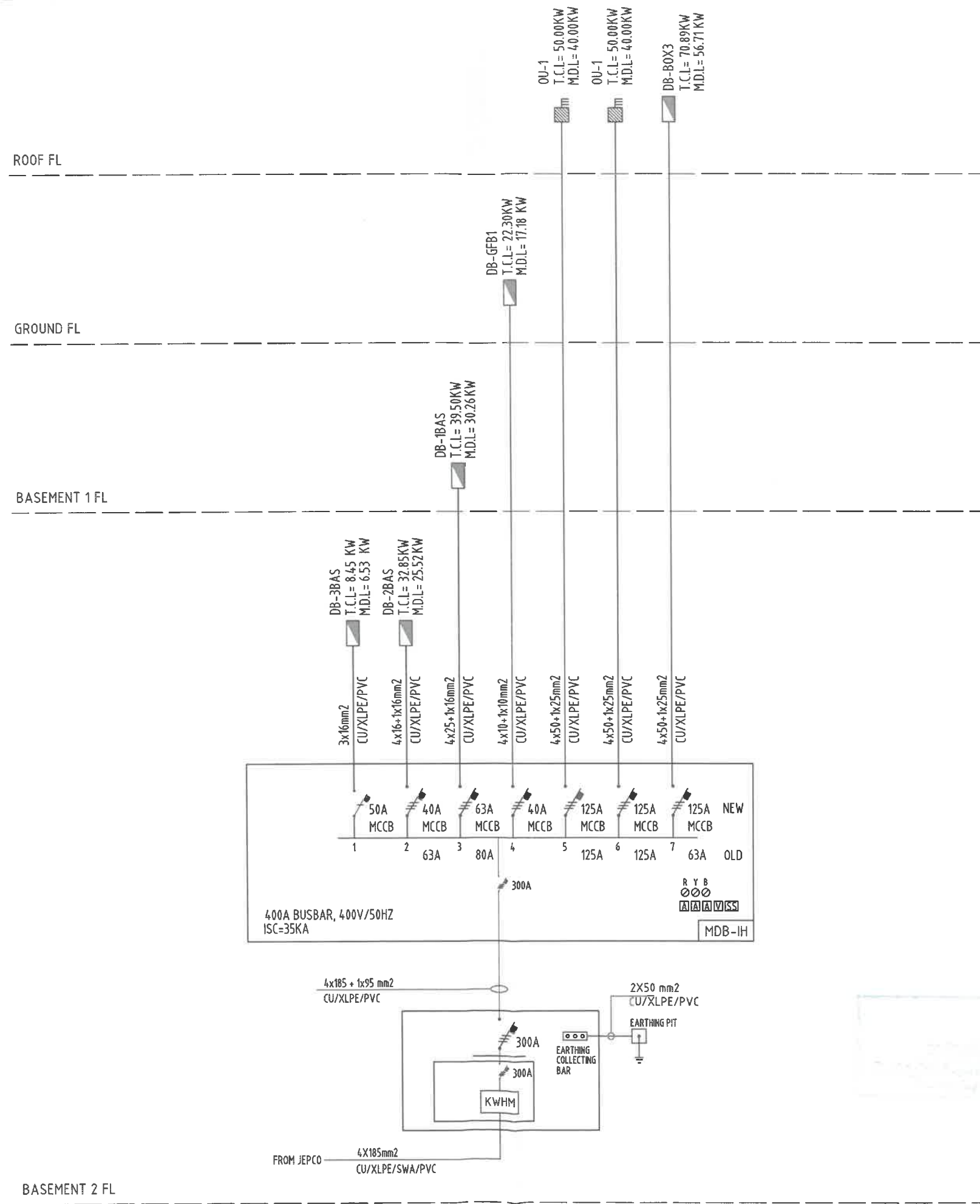
SABE Glass Box

Project Number

Date

Drawn by

Checked by



GJU /SABE
GLASS BOX

GJU/SABE

SABE Glass Box

Project Number

Date

Drawn by

Checked by