



THE GERMAN JORDANIAN UNIVERSITY CAMPUS

WASH MASTER , WAREHOUSE AT GJU



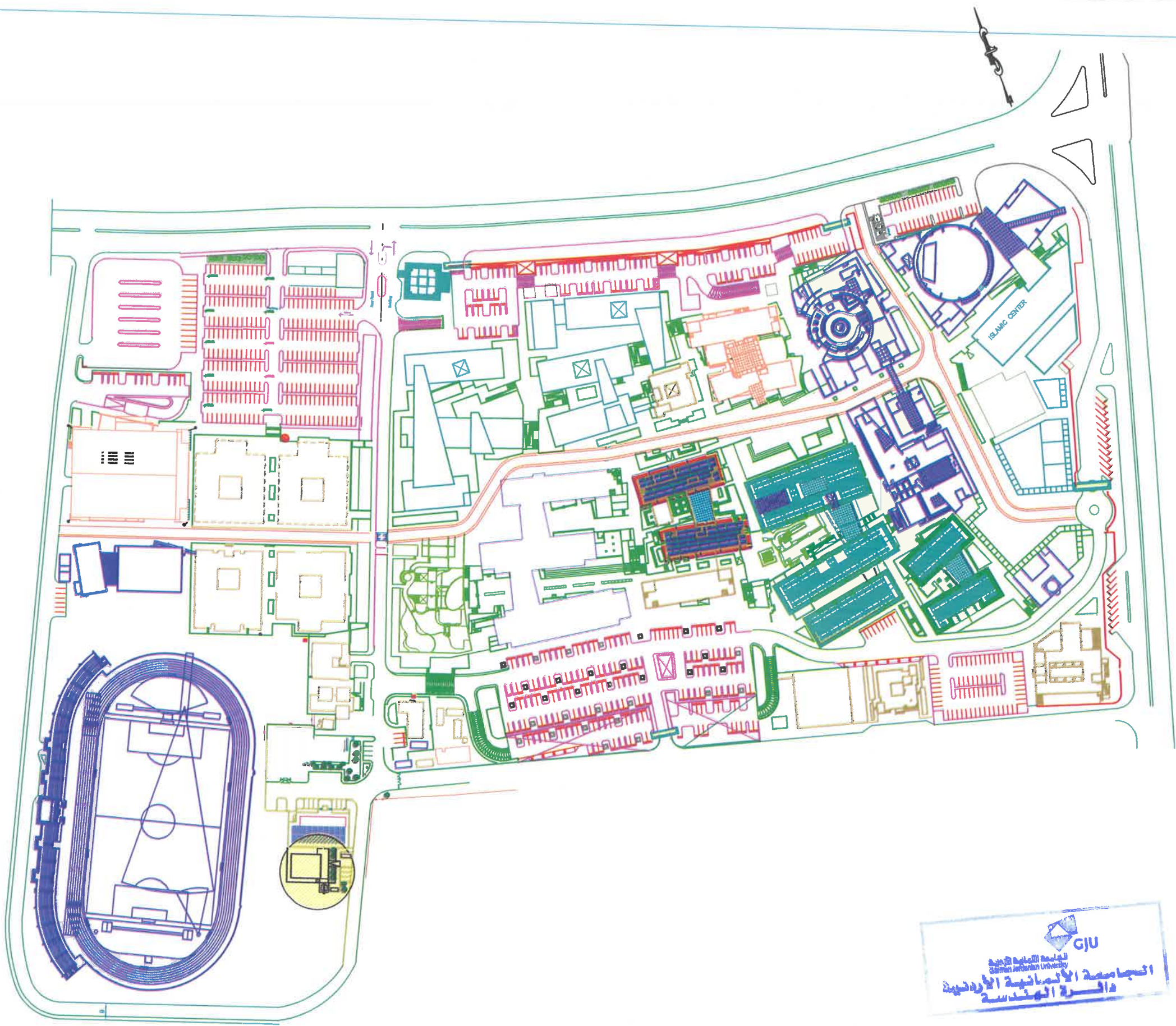
KEY PLAN





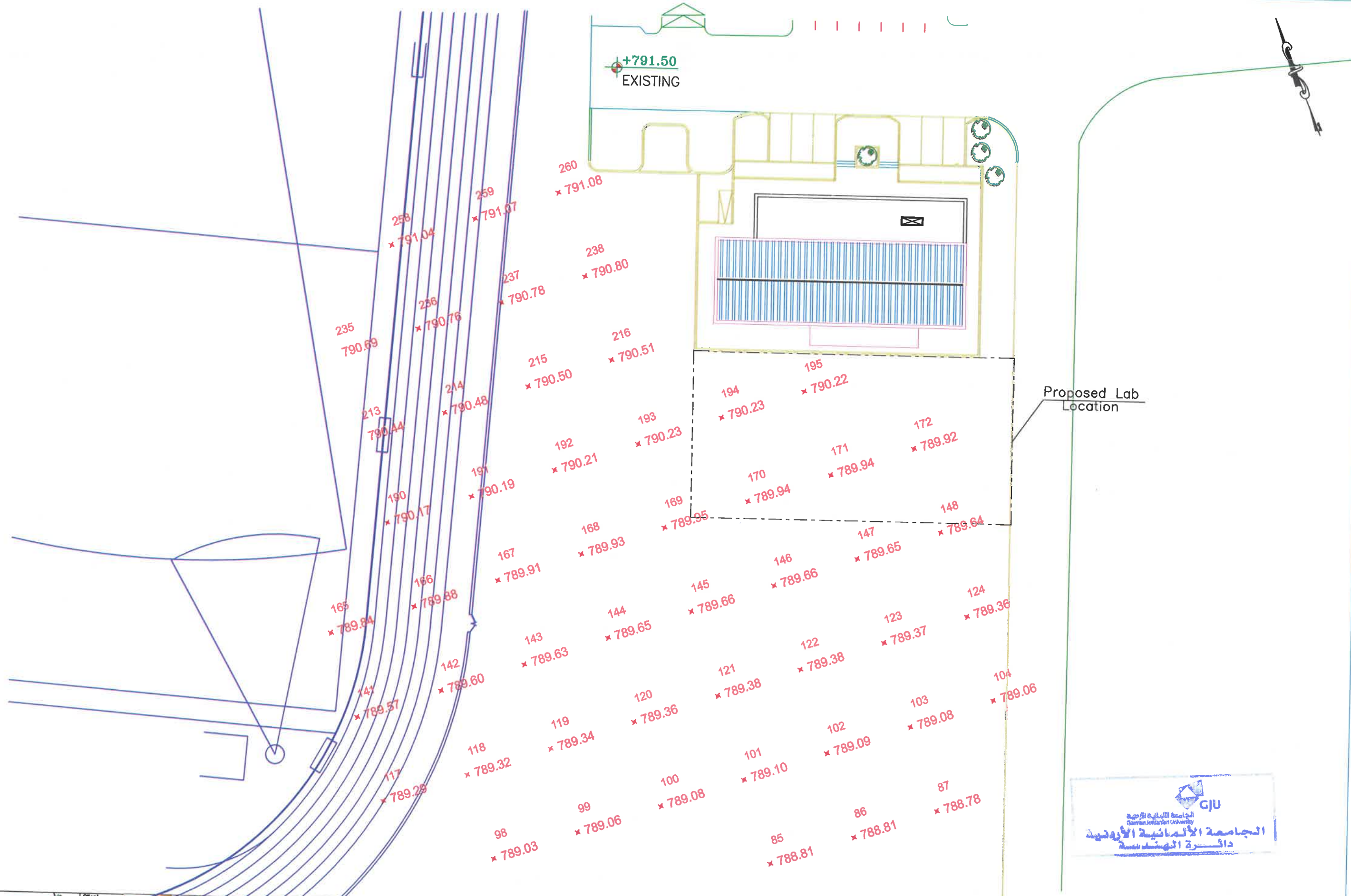
Client



Consultant
German Jordanian
University
AMMAN - JORDAN



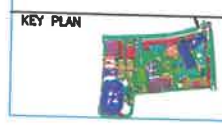
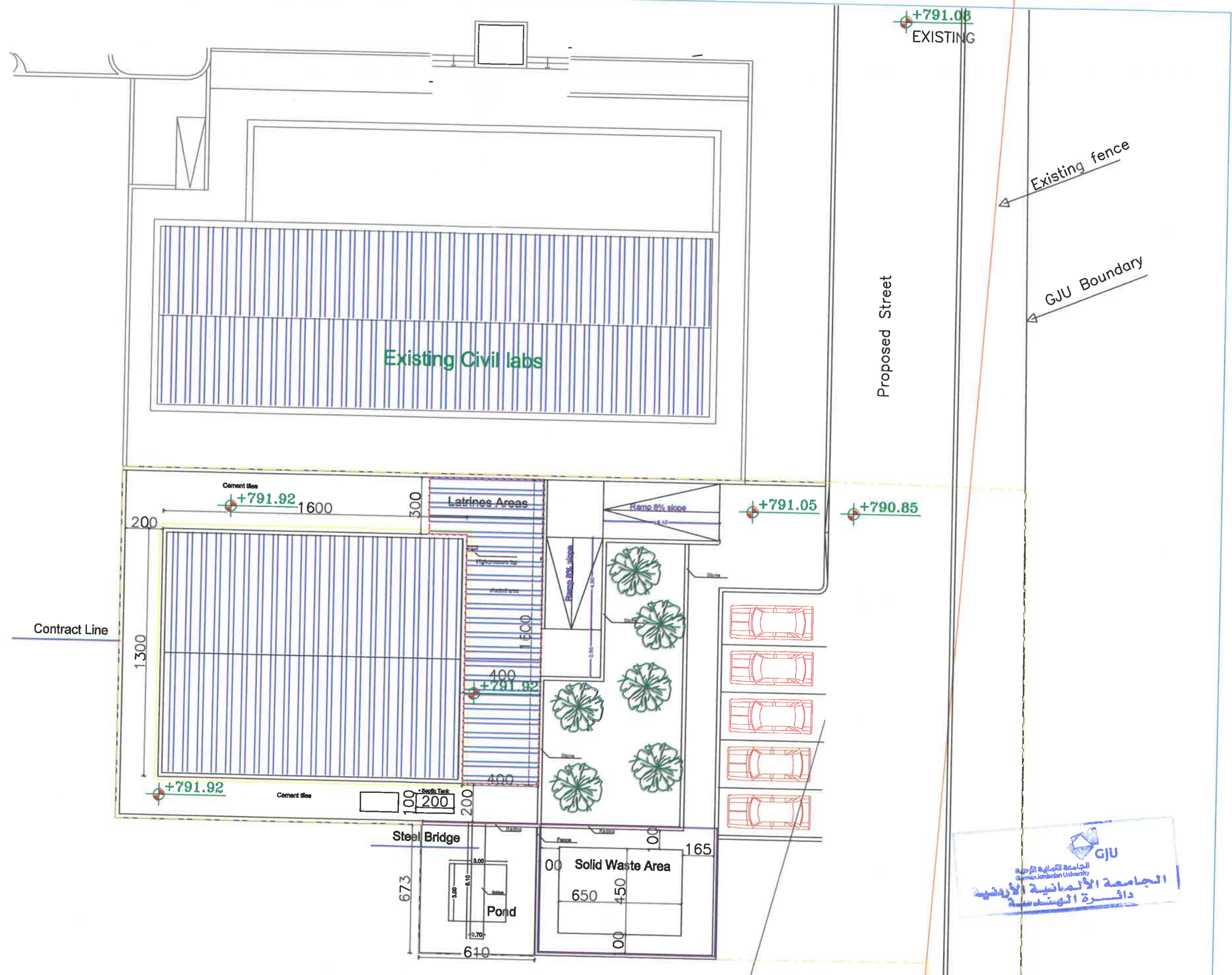
<p>KEY PLAN</p> 	<p>Client</p>  <p>الجامعة الألمانية الأردنية German Jordanian University</p>	<p>Consultant</p> <p>German Jordanian University AMMAN - JORDAN</p>	<p>WASH MASTER WAREHOUSE</p>	<p>GJU MASTER PLAN</p>	<p>BY ENG.RASHA HADADDEN</p>	<p>Scale N.T.S</p>	<p>A01</p>
---	---	---	------------------------------	------------------------	------------------------------	------------------------	------------



Proposed Lab Location



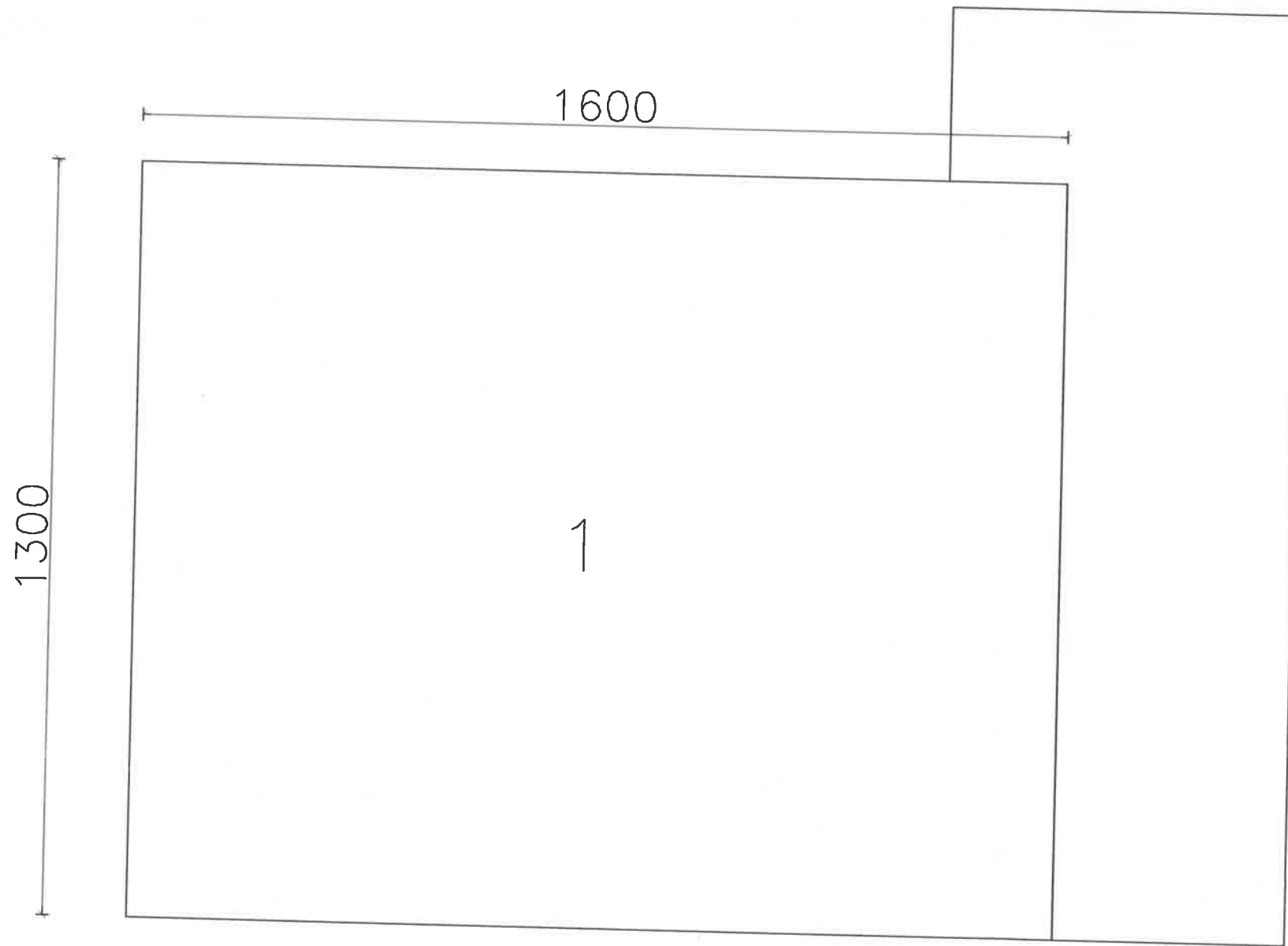
<p>KEY PLAN</p>	<p>Client</p> <p>الجامعة الألمانية الأردنية German Jordanian University</p> <p>AMMAN - JORDAN</p>	<p>Consultant</p> <p>German Jordanian University</p>	<p>WASH MASTER WAREHOUSE</p>	<p>TOPOGRAPHY</p>	<p>BY ENG.RASHA HADADDEN</p>	<p>Scale N.T.S</p>	<p>A02</p>
-----------------	---	--	------------------------------	-------------------	------------------------------	------------------------	------------



Client
GJU
 الجامعة الألمانية الأردنية
 German Jordanian University
 AMMAN - JORDAN

Consultant
 German Jordanian
 University
 AMMAN - JORDAN

WASH MASTER WAREHOUSE	SITE PLAN	BY ENG.RASHA HADADDEN	Scale 1/100	A03
-----------------------	-----------	-----------------------	----------------	-----



NO.	Dimensions	Area
1	16.00m*13.00m	208.00m ²
Canopy		70.00m ²



KEY PLAN



Client



Consultant
 German Jordanian
 University
 AMMAN - JORDAN

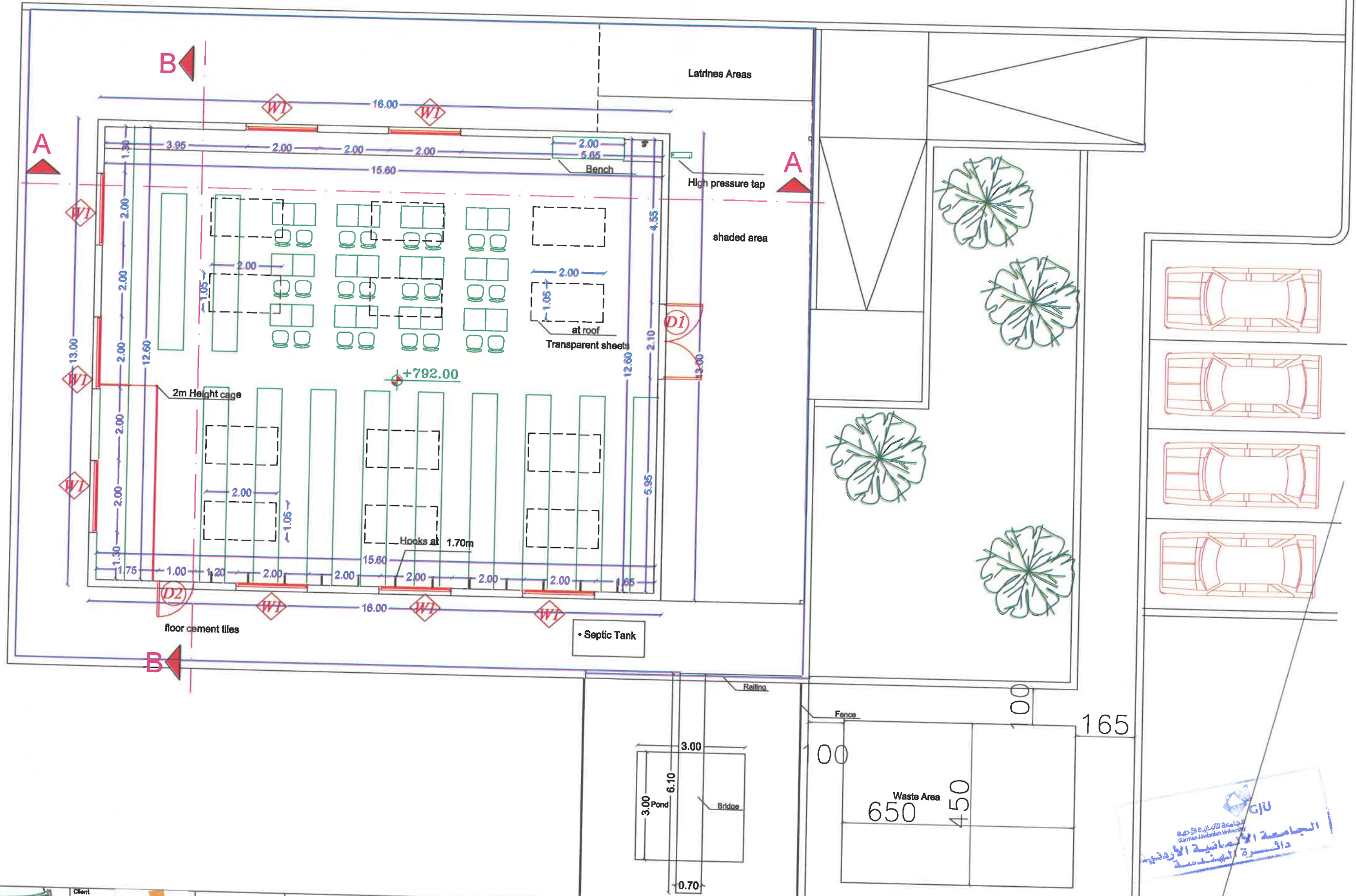
WASH MASTER WAREHOUSE

AREA SCHEDULE

BY ENG.RASHA HADADDEN

Scale
 1/50

A04



KEY PLAN



Client



Consultant
German Jordanian
University
AMMAN - JORDAN

WASH MASTER WAREHOUSE

LEVEL 1 FLOOR PLAN

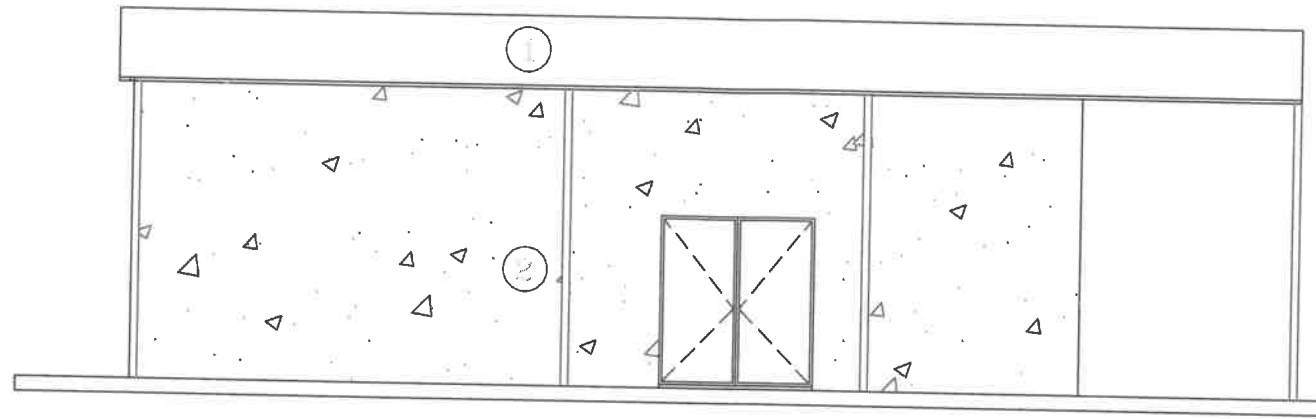
BY ENG.RASHA HADADDEN

Scale

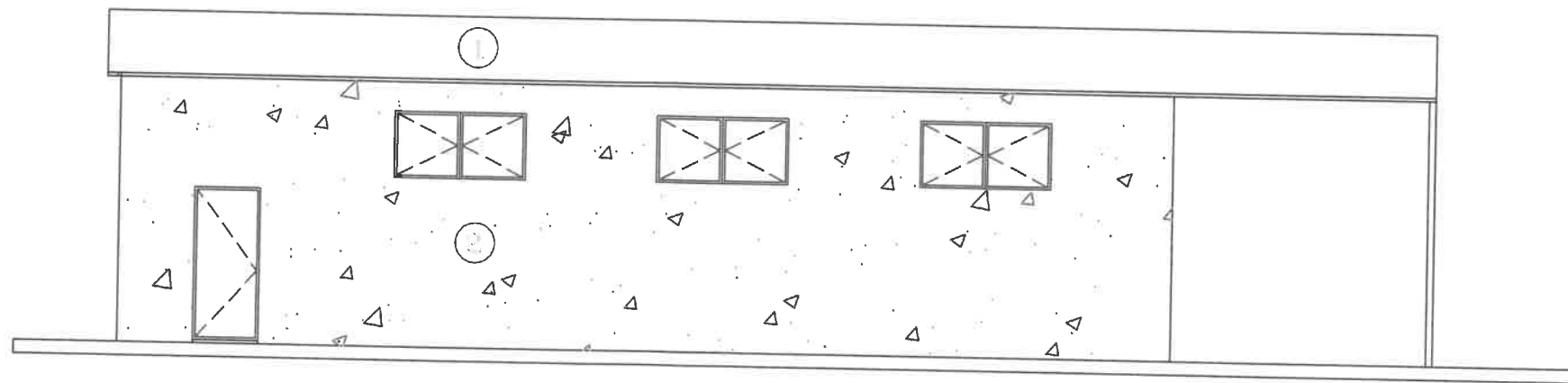
1/100

A05

1	Colored Plaster
2	Fasica paint



East Front Elevation



South Side Elevation



KEY PLAN



Client



Consultant
German Jordanian
University
AMMAN - JORDAN

WASH MASTER WAREHOUSE

ELEVATIONS

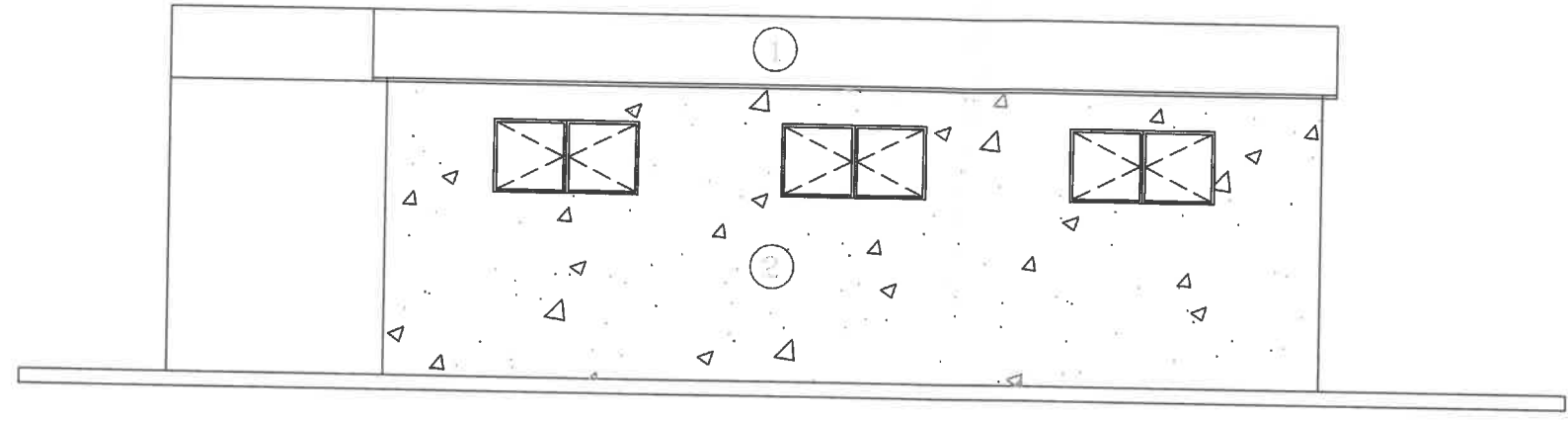
BY ENG.RASHA HADADDEN

Scale

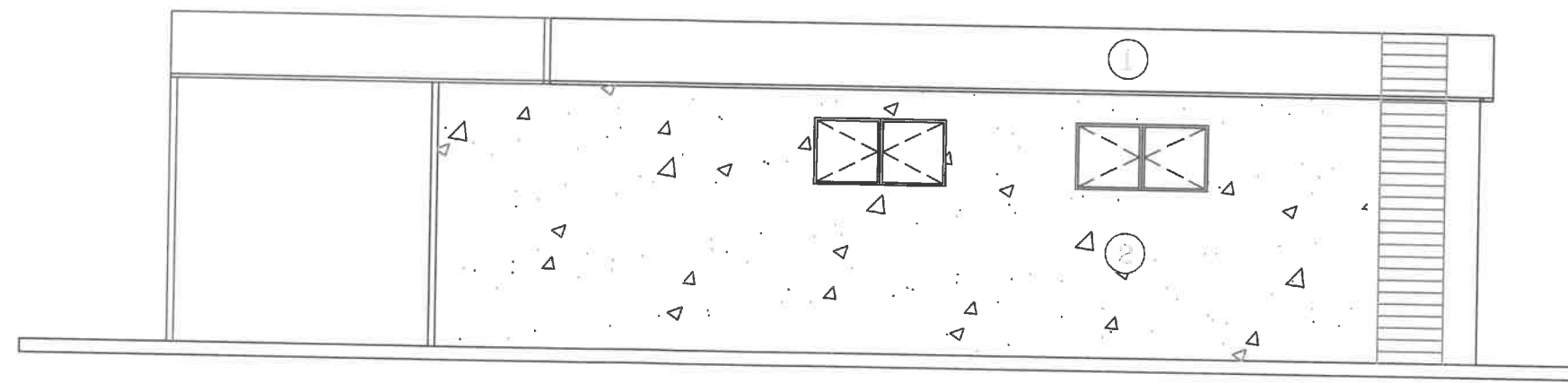
1/100

A06

1	Colored Plaster
2	Fasica paint

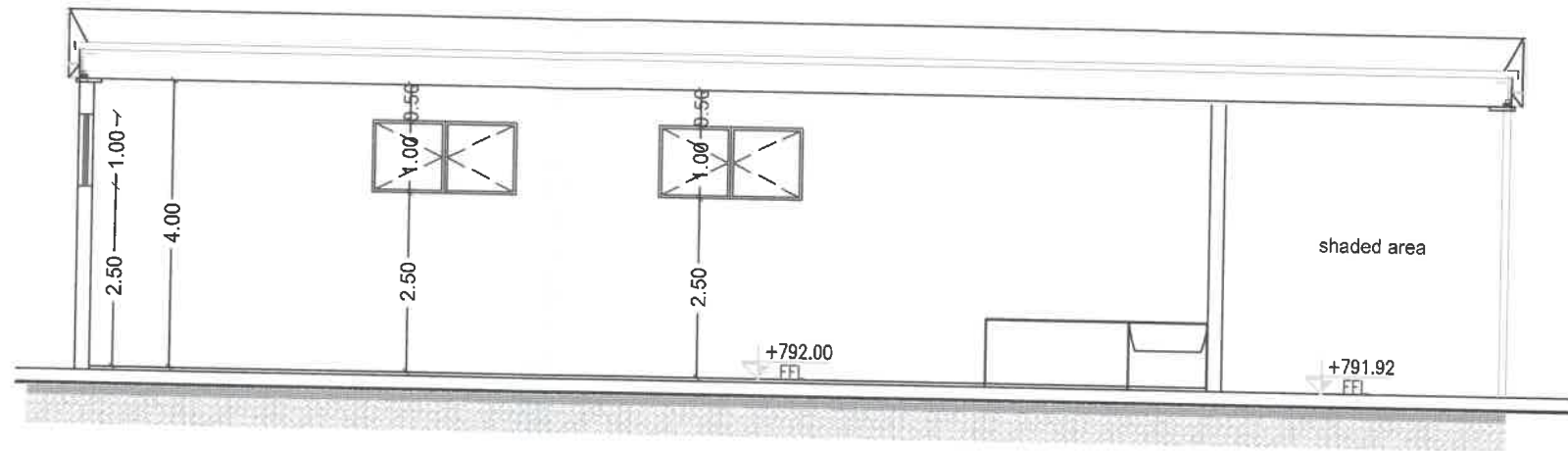


West Back Elevation

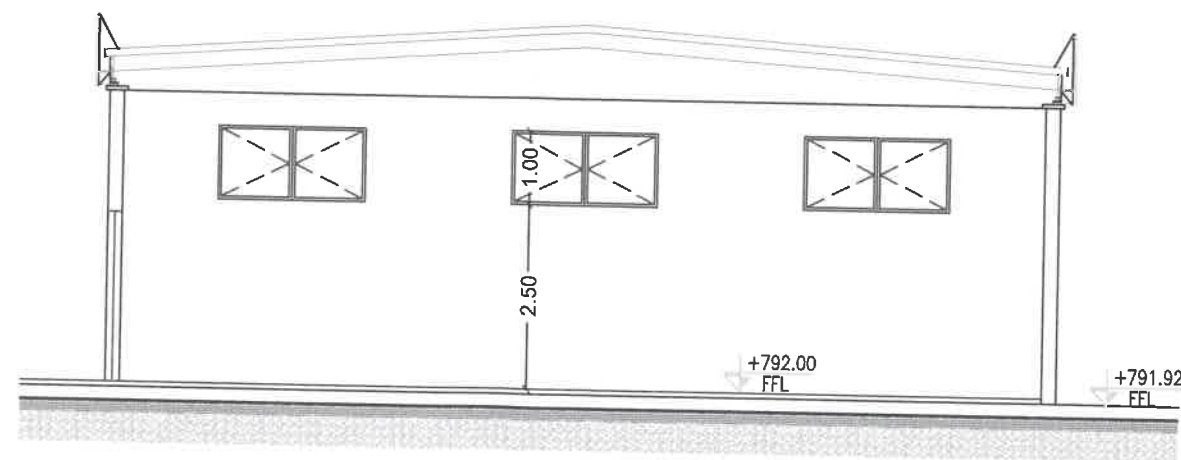


North Side Elevation





Section A-A



Section B-B



KEY PLAN



Client



Consultant
German Jordanian
University
AMMAN - JORDAN

WASH MASTER WAREHOUSE

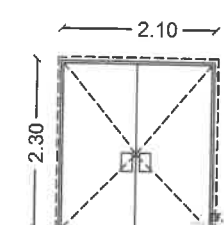
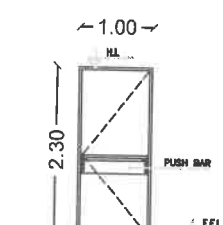
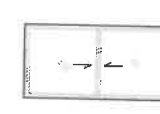
SECTIONS

BY ENG.RASHA HADADDEN

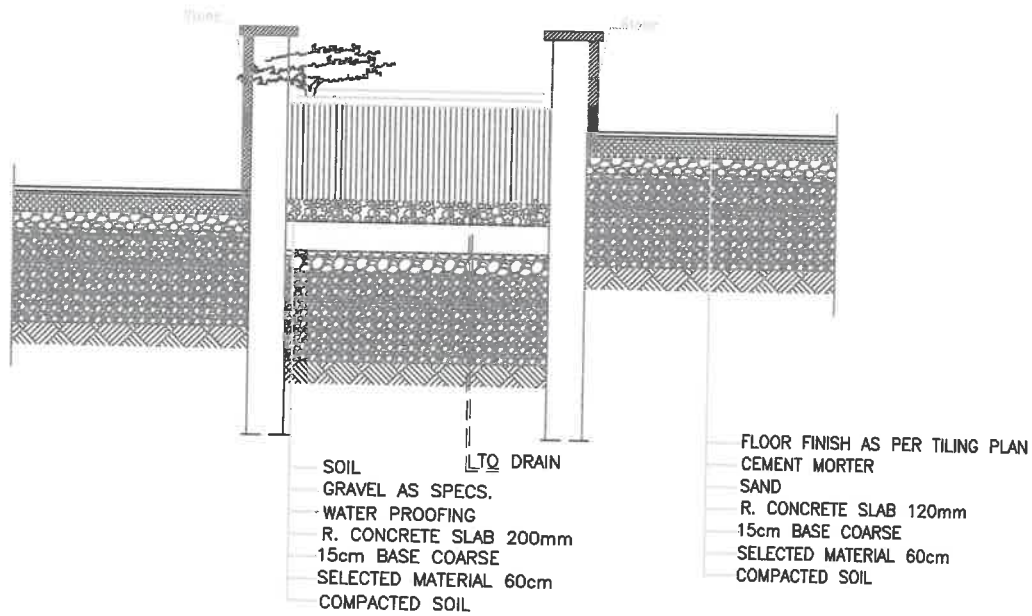
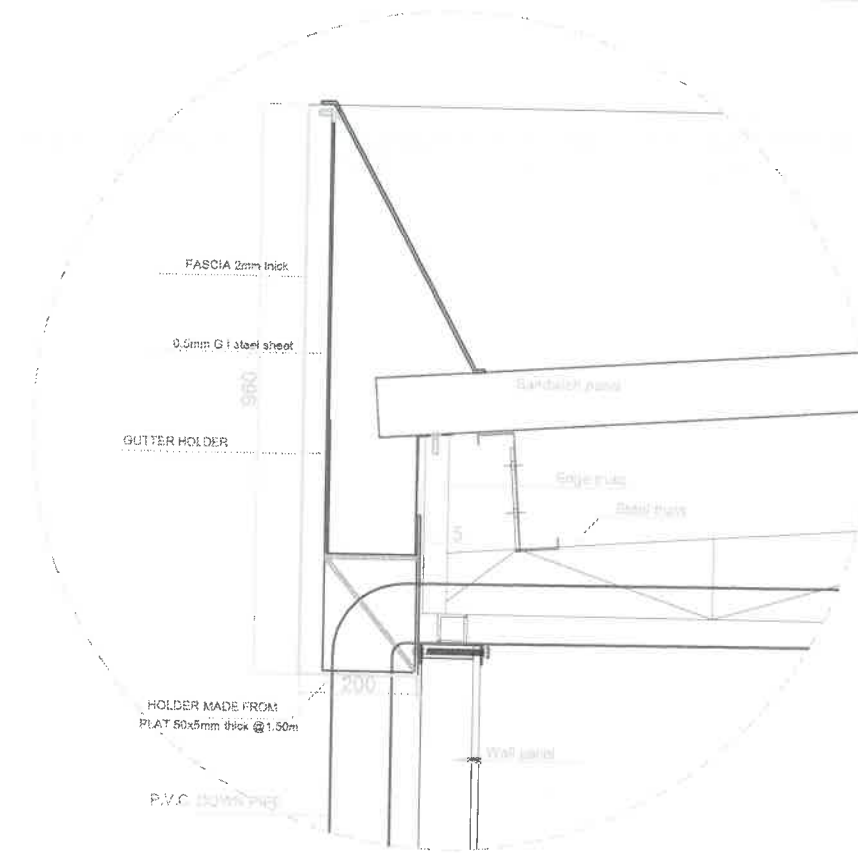
Scale
1/100

A08

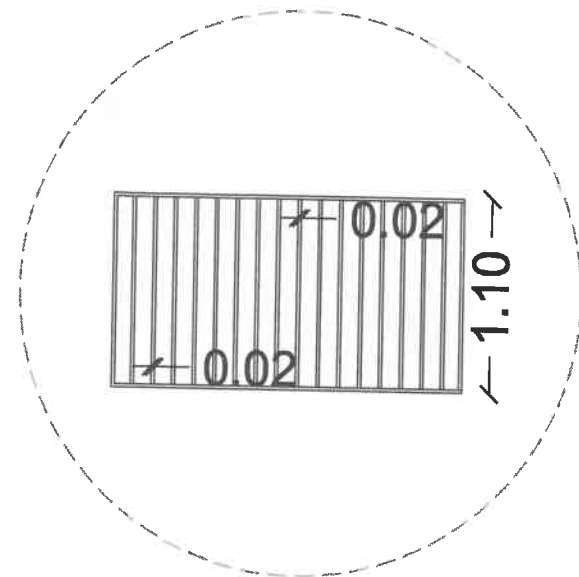
DOORS and Windows Table

SYMBOL	D1	D2	W2
DIMENSION	1.60 x 2.30	1.00 x 2.30	2.00 x 1.00
TYPE			
DETAILS	ALUM. FRAME ALUMINUM DOOR	SINGLE SWING FULL FLUSH	STEEL FRAME HOLLOW STEEL LEAF
			SLIDING ALUMINUM

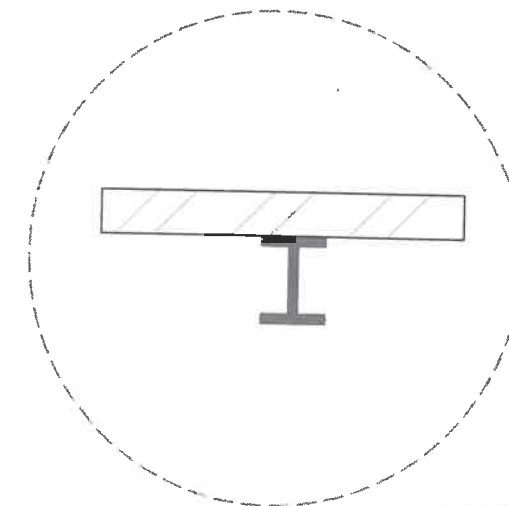
* FOR FIRE RATED DOORS MATERIALS REFER TO PROJECT SPECIFICATION



LA
A-A

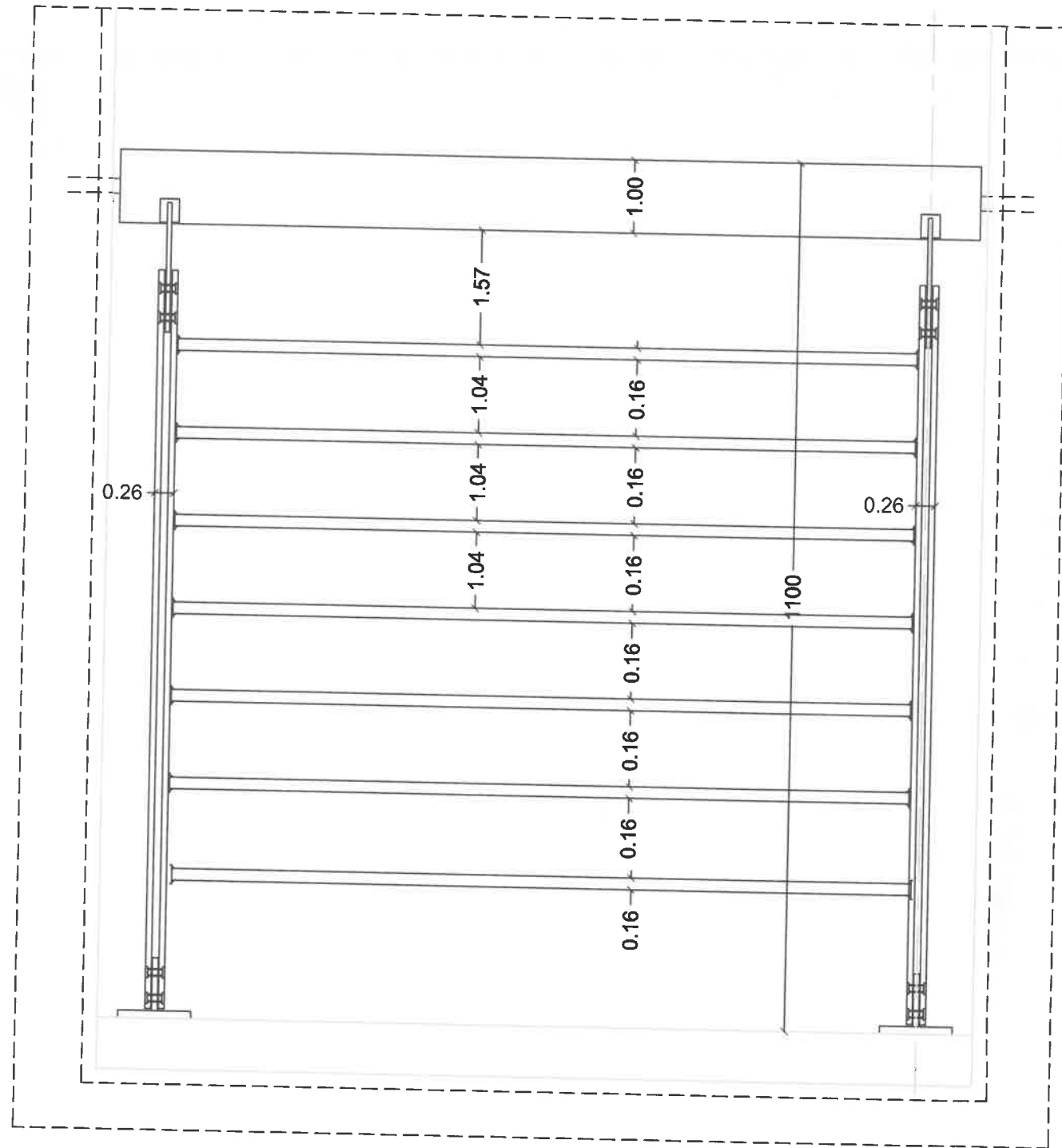


Window Guards

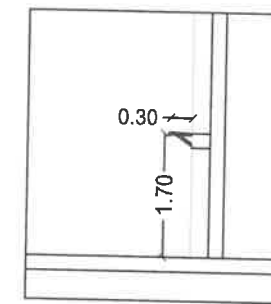


column with bricks wall detail





Railing Detail



Hook Detail



KEY PLAN



Client



Consultant
German Jordanian
University
AMMAN - JORDAN

WASH MASTER WAREHOUSE

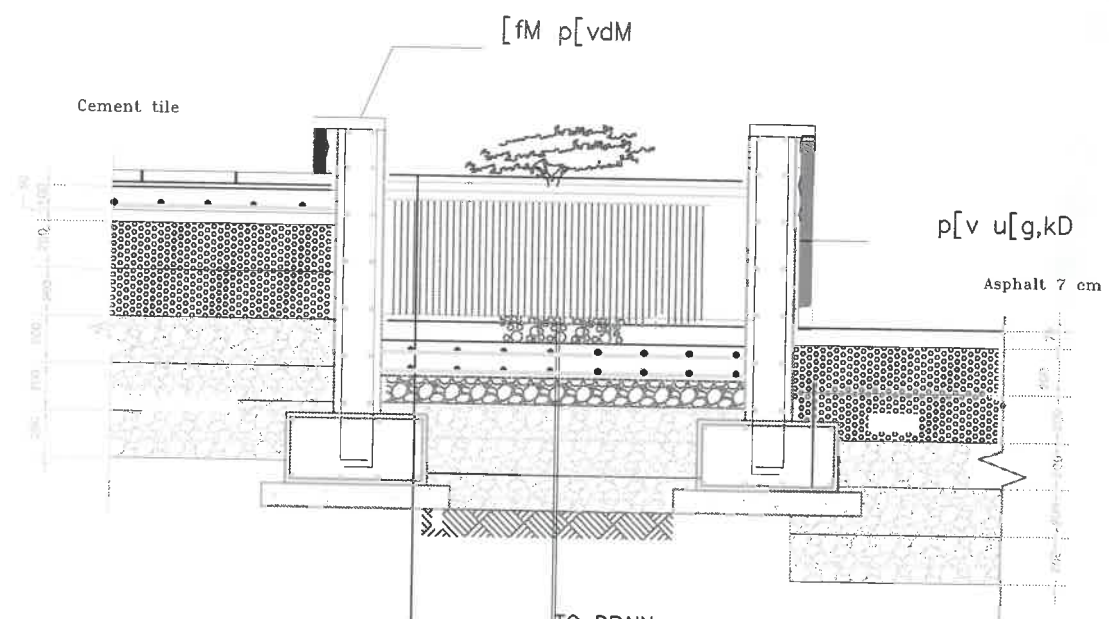
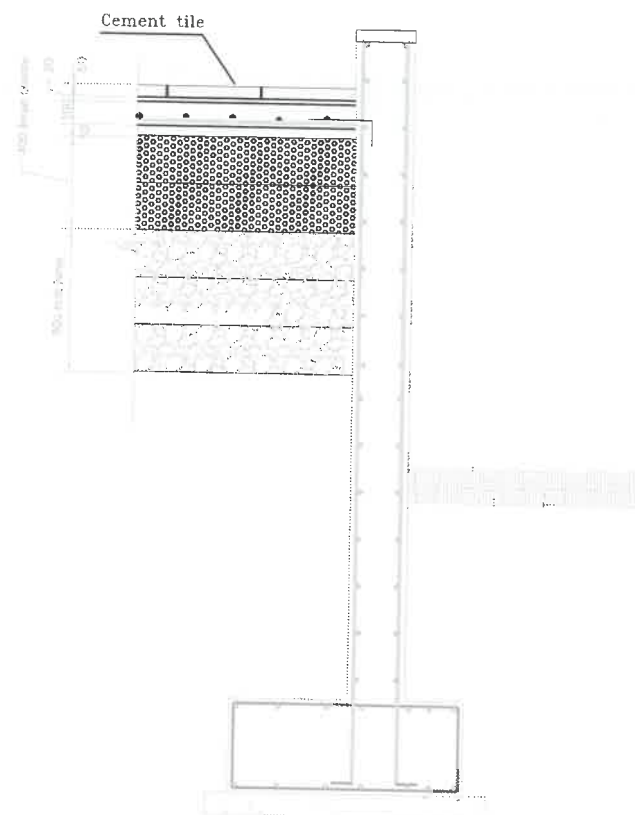
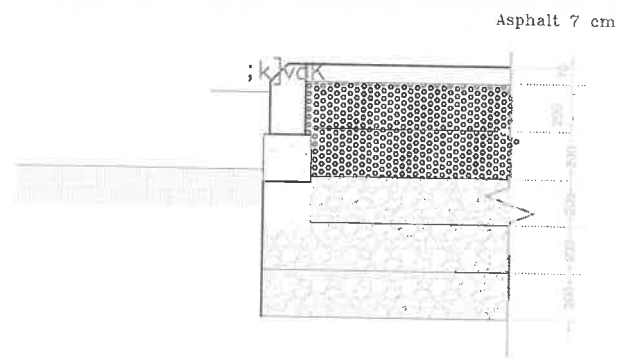
DETAILS

BY ENG.RASHA HADADDEN

Scale

N.T.S

A10



- SOIL
- GRAVEL AS SPECS.
- WATER PROOFING
- R. CONCRETE SLAB 200mm with ϕ 12/20cm Two layer
- 15cm BASE COARSE
- SELECTED MATERIAL 60cm
- COMPACTED SOIL



Client
GJU
 الجامعة الألمانية الأردنية
 German Jordanian University

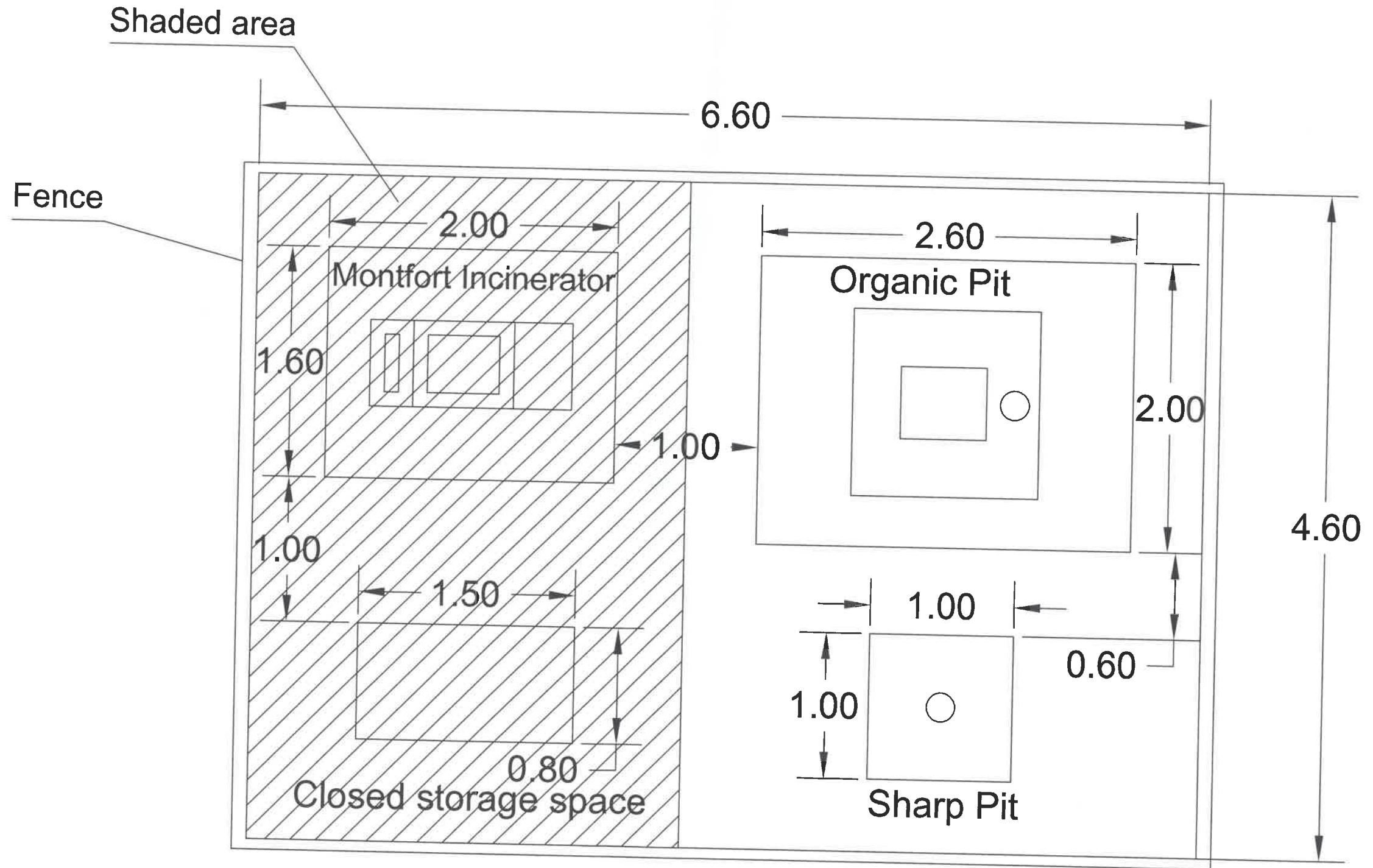
Consultant
GJU
 German Jordanian University
 AMMAN - JORDAN

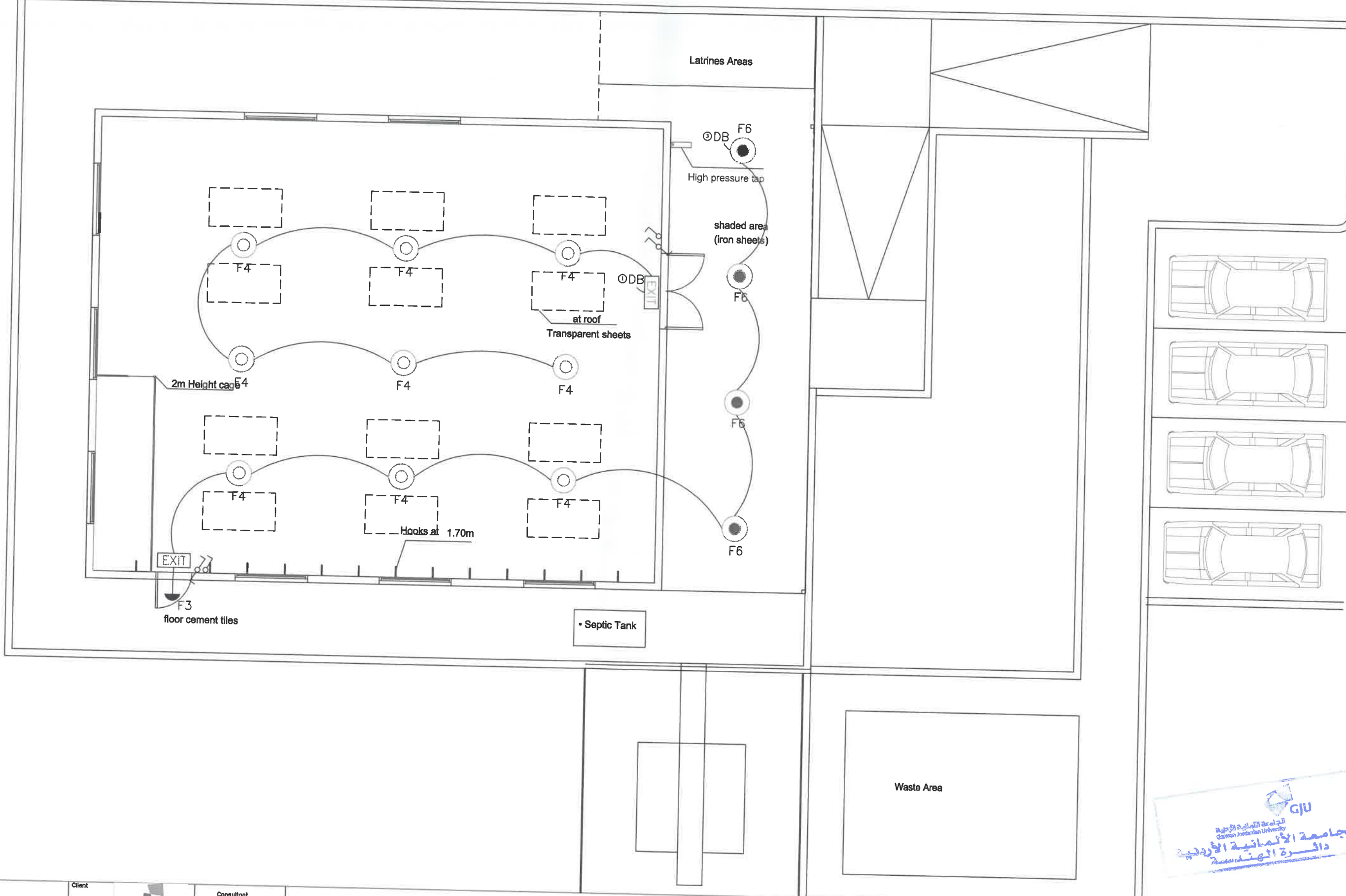
WASH MASTER WAREHOUSE

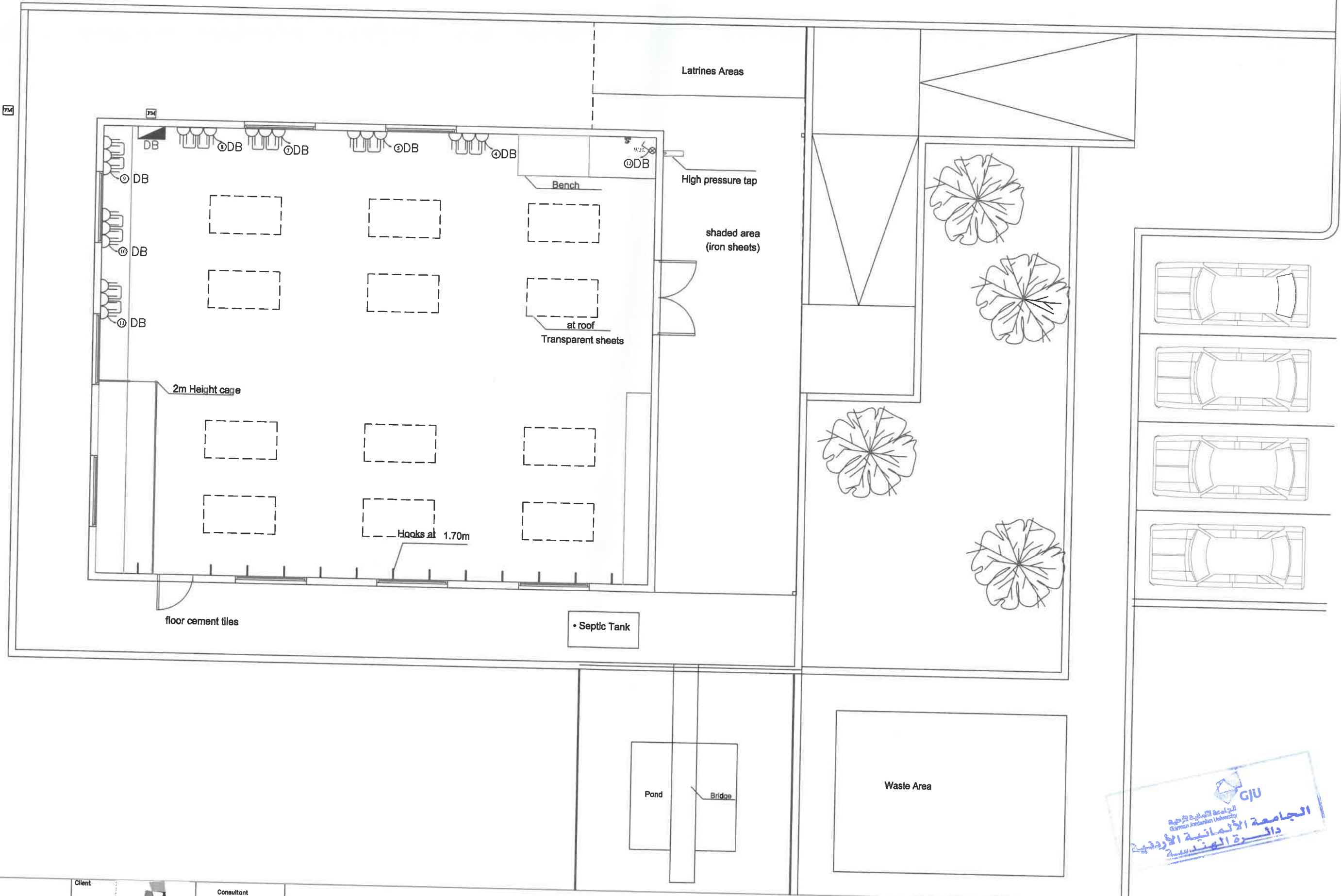
General DETAILS

Scale
 N.T.S

SOLID WASTE AREA





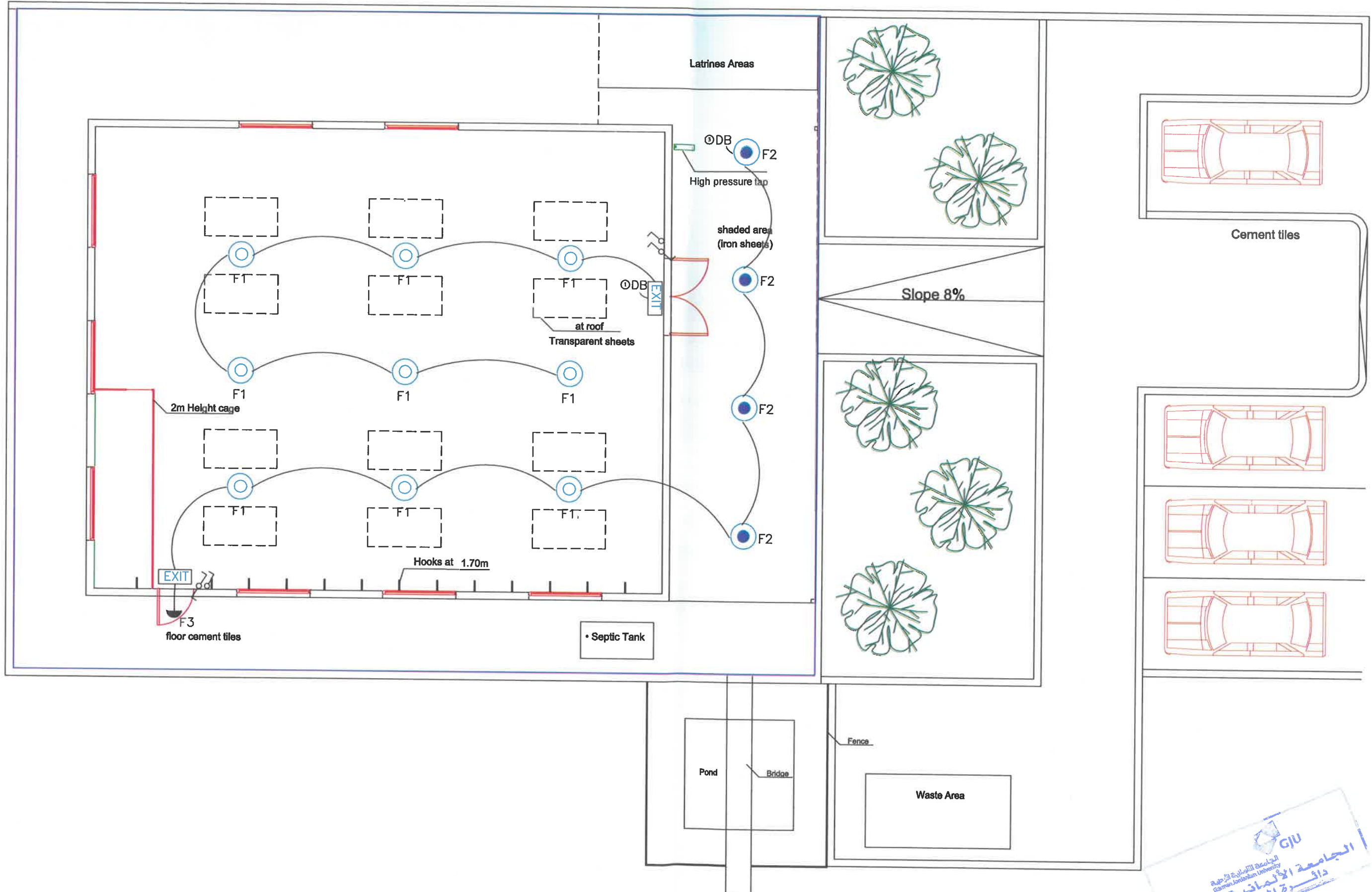


PANEL NAME : DB		MOUNTED : SURFACE MOUNTED															400V 3 PHASE: 4W&G4X10 +1X10 CU/PVC/SWA/ PVC CABLE						TPN DB:IP41		6 WAY	
		LOCATION : WASHLAB																								
Size of Cond. (mm)	Size of Wire (mm ²)	CT No	Description	Phase (R) (W)	Phase (Y) (W)	Phase (B) (W)	PH	AMP Trip	AMP Frame	BR No.	R	Y	B	BR No.	AMP Frame	AMP Trip	PH	Phase (R) (W)	Phase (Y) (W)	Phase (B) (W)	Description	CT No.	Size of Wire (mm ²)	Size of Cond. (mm)		
20	2X2.5+2.5	1	LGT	1000			R1	10	100	1	X			2	100	10	R2									
20	2X2.5+2.5	3	LGT		600		Y1	10	100	3		X		4	100	10	Y2				SPARE	2		20		
20	2x4+4	5	SKT			1500	B1	16	100	5			X	6	100	16	B2		1500		SKT	4	2x4+4	20		
20	2x4+4	7	SKT	1500			R3	16	100	7	X			8	100	16	R4	1500			SPARE	6		20		
20	2x4+4	9	SKT		1500		Y3	16	100	9		X		10	100	16	Y4		1500		SKT	8	2x4+4	20		
20	2x4+4	11	SKT			1500	B3	16	100	11			X	12	100	16	B4			2000	SKT	10	2x4+4	20		
20		13	SPACE				R5		100	13	X			14	100	16	R6				EWH	12	2x4+4	20		
20		15	SPACE				Y5		100	15		X		16	100	20	Y6				SPARE	14		20		
20		17	SPACE				B5		100	17			X	18	100	20	B6				SPARE	16		20		
connected load (W)				2500	2100	3000												1500	3000	2000						
TCL (W)				7600			R Y B												connected load (W)							
TOTAL CONNECTED LOAD =				14.10	KW			MAIN BREAKER									6500			TCL (W)						
DEMAND FACTOR				0.80	FOR LIGHTING AND POWER CIRCUITS			32 A,3P,MCB												Total connected load "R"			4000 W			
TOTAL DEMAND LOAD =				11.28	KW															Total connected load "Y"			5100 W			
DEMAND CURRENT				14.40	A															Total connected load "B"			5000 W			
CONNECTED CURRENT				18.00	A																					

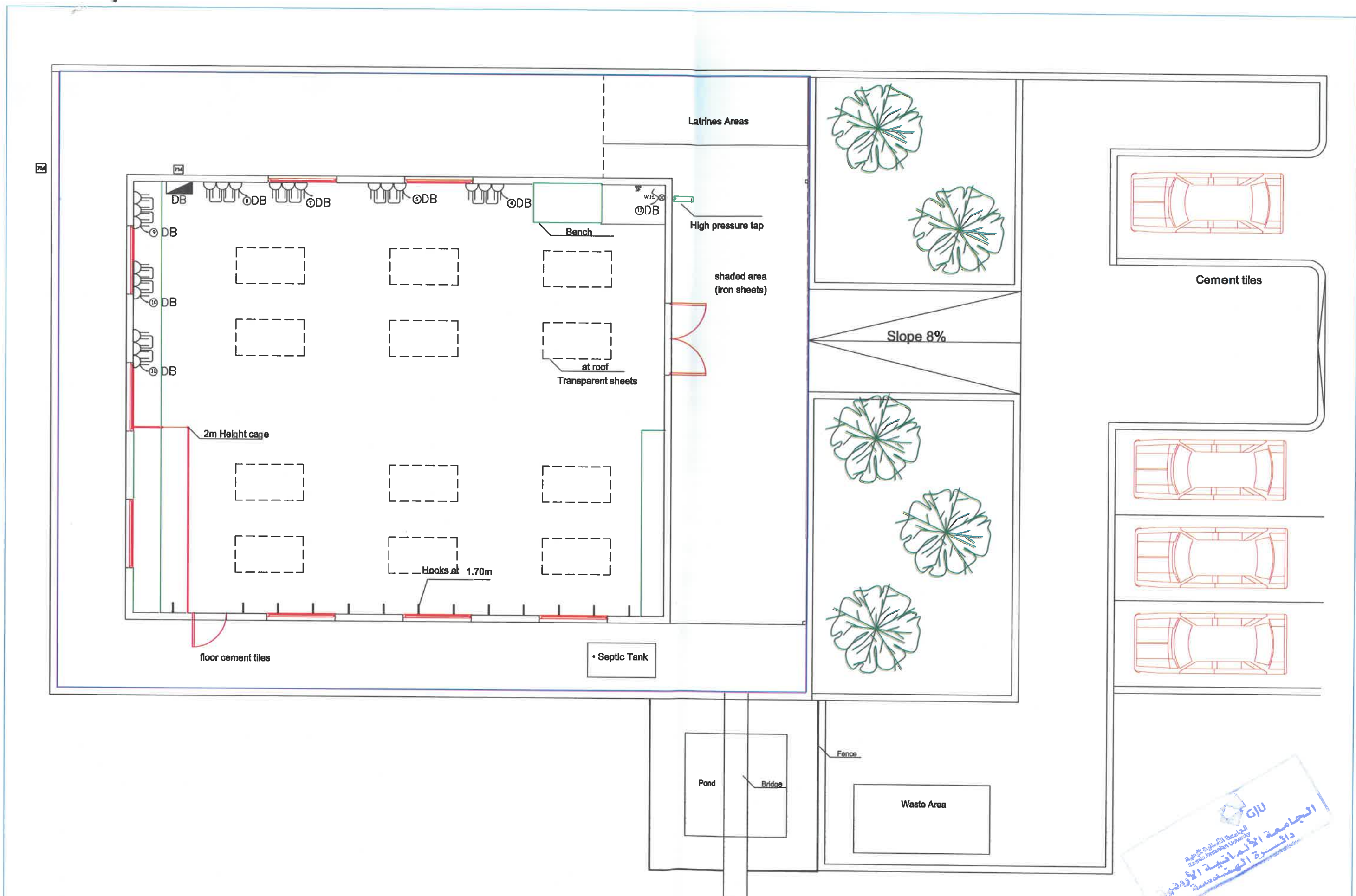
	10 AMP. ONE GANG ONE-WAY SWITCH.
	10 AMP. ONE-GANG TWO-WAY SWITCH INTERMEDIATE.
	13 AMP. SWITCH SINGLE (DUPLEX) PHASE SOCKET OUTLET.
	20 AMP. DP SWITCH WITH INDICATION LAMP.
	DISTRIBUTION BOARD AND POWER MANHOLE.


SYMBOL	FIX. REF.	VOLTS	WATTS	DESCRIPTION	MOUNTING TYPE
	F3	230	20W 3015 Lm 6000K	LIGHTING FIXTURE, SURFACE CIRCULAR LUMINARIES WITH 20W LED MODULE (LED CHIP), WITH OPAL POLYCARBONATE DIFFUSER AND POLYCARBONATE BODY, IP65. LED DRIVER.	SURFACE BULKHEADS
	F4	230	1X150W	INDUSTRIAL GOLON LED HIGH BAY LIGHT INDOOR, MADE OF DIE-CAST ALUMINUM APPLIANCE BODY, WITH PROTECTION PRISMATIC POLYCARBONATE COVER, WITH LUMENS EFFICIENCY: 130LM/W, COLD WHITE 5700K/6000K, 150W LED DRIVER, BEAM ANGLE: 90, CRI>80, IP 65.	SURFACE
	F6	230	40W	OUTDOOR LED LIGHTING FIXTURE FOR FIXED INSTALATION ON THE CELLING, BODY MADE BY DIE-CAST ALUMINUM, COATED WITH POLYESTER THERMOSET POWDER, COATED WITH POWDERED POLYESTER WITH TEMPERED GLASS. LUMINOUS FLUX 3800Lm, CCT 4000K.	CEILLING SURFACE
	EXIT	230	2X8W	MAINTAINED /NON MAINTAINED, EMERGENCY EXIT SIGN. 2x8W FLUORESCENT LAMP, GEAR AND EMERGENCY KIT, FULLY WIRED FOR 3 HOURS DURATION,NI-CD BATTERIES. SINGLE FACE, WITH OPAL DIFFUSER.	WALL MOUNTED






 الجامعة الألمانية الأردنية
 German Jordanian University
 دائرة الهندسة المعمارية



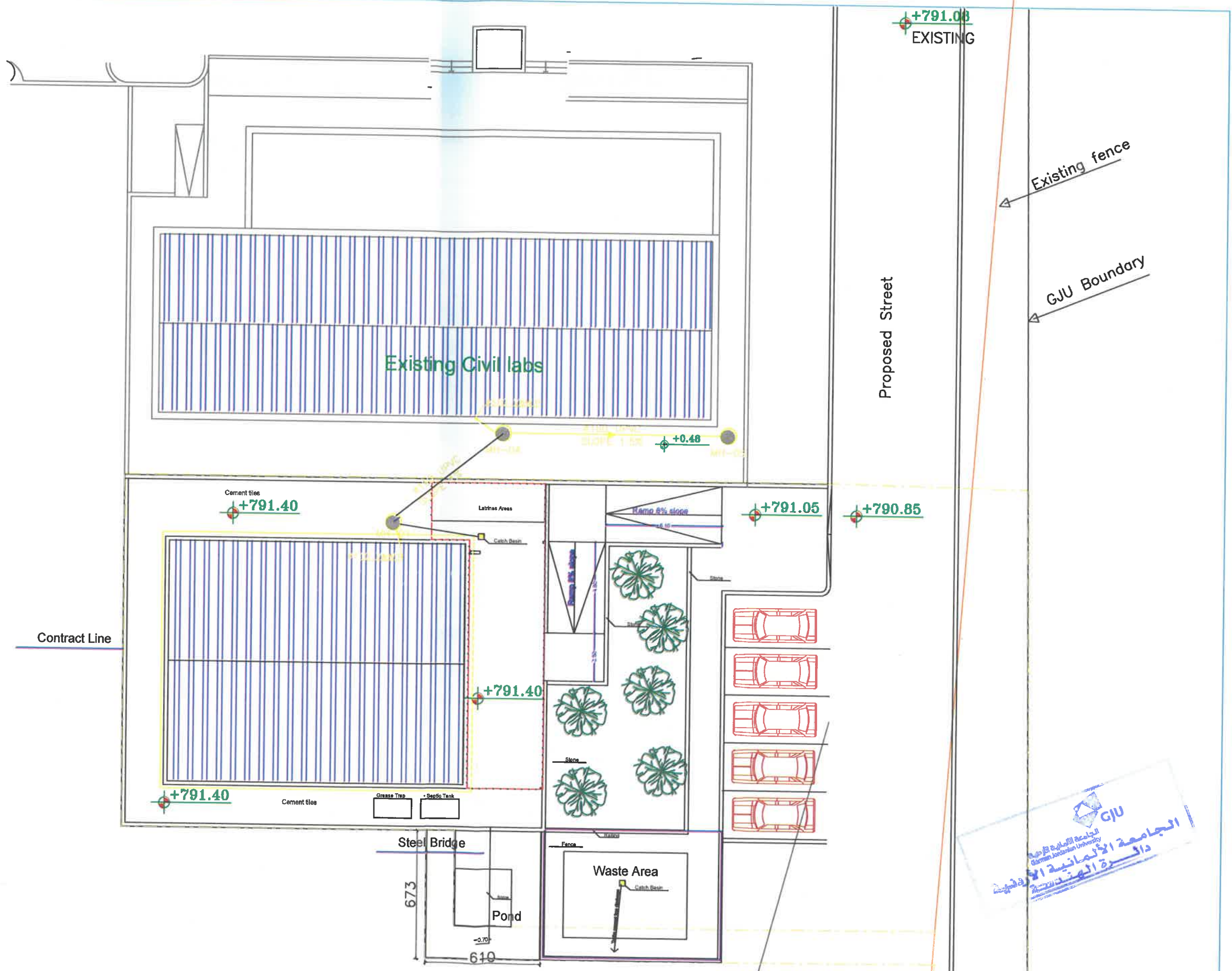
KEY PLAN	Client  الجامعة الألمانية الأردنية German Jordanian University	Consultant German Jordanian University AMMAN - JORDAN	WASH MASTER WAREHOUSE	LEVEL 1 POWER SYSTEM	Scale 1/100	E02
----------	--	---	-----------------------	-------------------------	----------------	-----

Size of Cond. (mm)		Size of Wire (mm2)	CT No.	Description	Phase (R) (W)	Phase (Y) (W)	Phase (B) (W)	PH	AMP Trip	AMP Frame	BR No.	R	Y	B	BR No.	AMP Frame	AMP Trip	PH	Phase (R) (W)	Phase (Y) (W)	Phase (B) (W)	Description	CT No.	Size of Wire (mm2)	Size of Cond. (mm)	
20	2X2.5+2.5	1	LGT	1000				R1	10	100	1	X			2	100	10	R2				SPARE	2		20	
20	2X2.5+2.5	3	LGT		600			Y1	10	100	3		X		4	100	10	Y2		1500		SKT	4	2x4+4	20	
20	2x4+4	5	SKT			1500		B1	16	100	5			X	6	100	16	B2				SPARE	6		20	
20	2x4+4	7	SKT	1500				R3	16	100	7	X			8	100	16	R4	1500			SKT	8	2x4+4	20	
20	2x4+4	9	SKT		1500			Y3	16	100	9		X		10	100	16	Y4		1500		SKT	10	2x4+4	20	
20	2x4+4	11	SKT			1500		B3	16	100	11			X	12	100	16	B4			2000	EWB	12	2x4+4	20	
20		13	SPACE					R5		100	13	X			14	100	16	R6				SPARE	14		20	
20		15	SPACE					Y5		100	15		X		16	100	20	Y6				SPARE	16		20	
20		17	SPACE					B5		100	17			X	18	100	20	B6				SPARE	18		20	
connected load (W)					2500	2100	3000												1500	3000	2000					
TCL (W)					7600							R	Y	B									connected load (W)			
TOTAL CONNECTED LOAD =					14.10	KW						MAIN BREAKER											6500	TCL (W)		
DEMAND FACTOR					0.80	FOR LIGHTING AND POWER CIRCUITS						32 A,3P,MCB											Total connected load "R"	4000 W		
TOTAL DEMAND LOAD =					11.28	KW																	Total connected load "Y"	5100 W		
DEMAND CURRENT					14.40	A																	Total connected load "B"	5000 W		
CONNECTED CURRENT					18.00	A																				

	10 AMP. ONE GANG ONE-WAY SWITCH.
	10 AMP. ONE-GANG TWO-WAY SWITCH INTERMEDIATE.
	13 AMP. SWITCH SINGLE (DUPLEX) PHASE SOCKET OUTLET.
	20 AMP. DP SWITCH WITH INDICATION LAMP.
	DISTRIBUTION BOARD AND POWER MANHOLE.

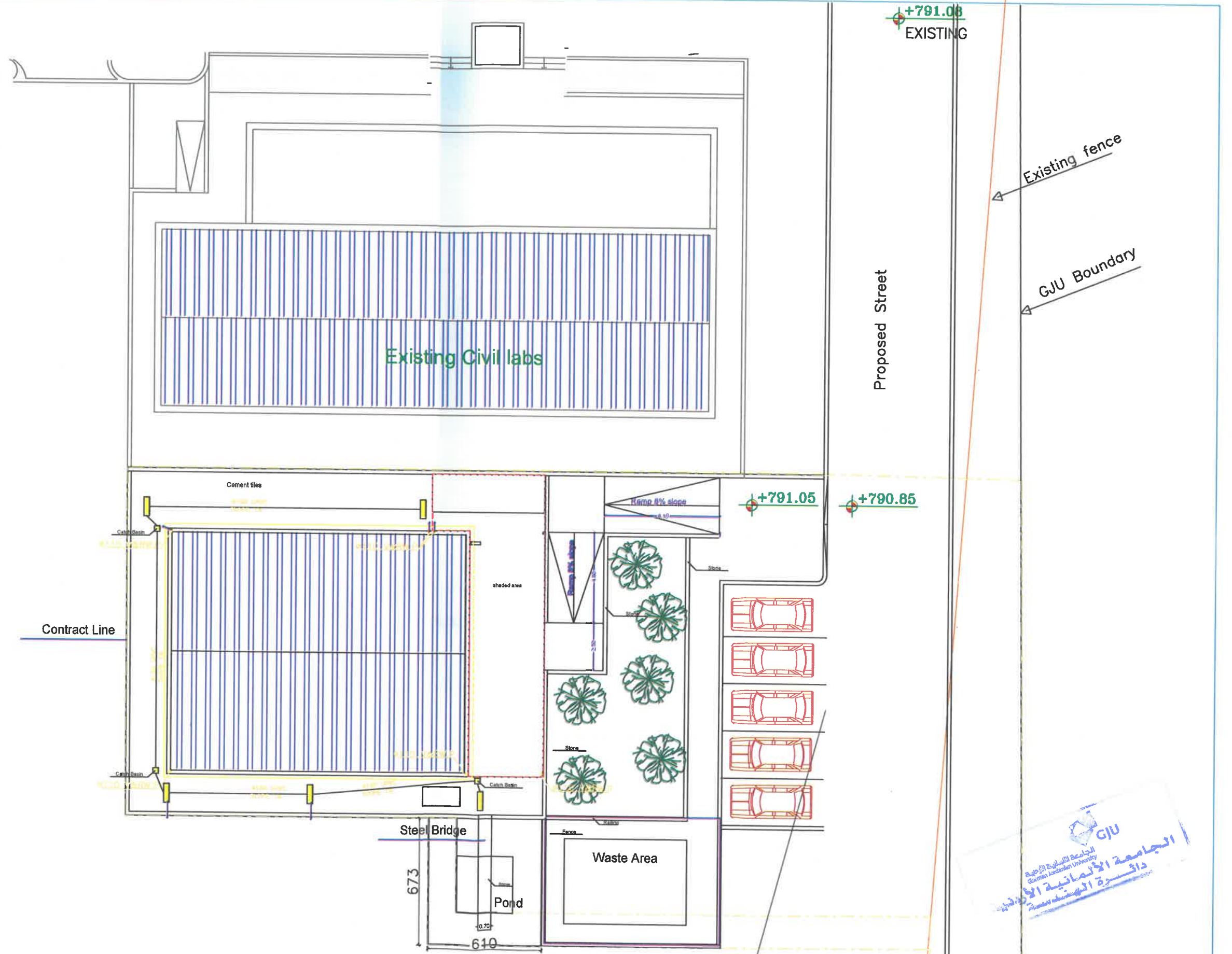
SYMBOL	FIX. REF.	VOLTS	WATTS	DESCRIPTION	MOUNTING TYPE
	F3	230	20W 3015 Lm 6000K	LIGHTING FIXTURE, SURFACE CIRCULAR LUMINARIES WITH 20W LED MODULE (LED CHIP), WITH OPAL POLYCARBONATE DIFFUSER AND POLYCARBONATE BODY, IP65. LED DRIVER.	SURFACE BULKHEADS
	F1	230	1X150W	INDUSTRIAL GOLON LED HIGH BAY LIGHT INDOOR, MADE OF DIE-CAST ALUMINUM APPLIANCE BODY, WITH PROTECTION PRISMATIC POLYCARBONATE COVER, WITH LUMENS EFFICIENCY: 130LM/W, COLD WHITE 5700K/6000K, 150W LED DRIVER, BEAM ANGLE: 90, CRI>80, IP 65.	SURFACE
	F2	230	40W	OUTDOOR LED LIGHTING FIXTURE FOR FIXED INSTALATION ON THE CELLING, BODY MADE BY DIE-CAST ALUMINUM, COATED WITH POLYESTER THERMOSET POWDER, COATED WITH POWDERED POLYESTER WITH TEMPERED GLASS. LUMINOUS FLUX 3800Lm, CCT 4000K.	CEILLING SURFACE
		230	2X8W	MAINTAINED /NON MAINTAINED, EMERGENCY EXIT SIGN. 2x8W FLUORESCENT LAMP, GEAR AND EMERGENCY KIT, FULLY WIRED FOR 3 HOURS DURATION, NI-CD BATTERIES. SINGLE FACE, WITH OPAL DIFFUSER.	WALL MOUNTED





Client
 Consultant
GJU
 German Jordanian University
 AMMAN - JORDAN

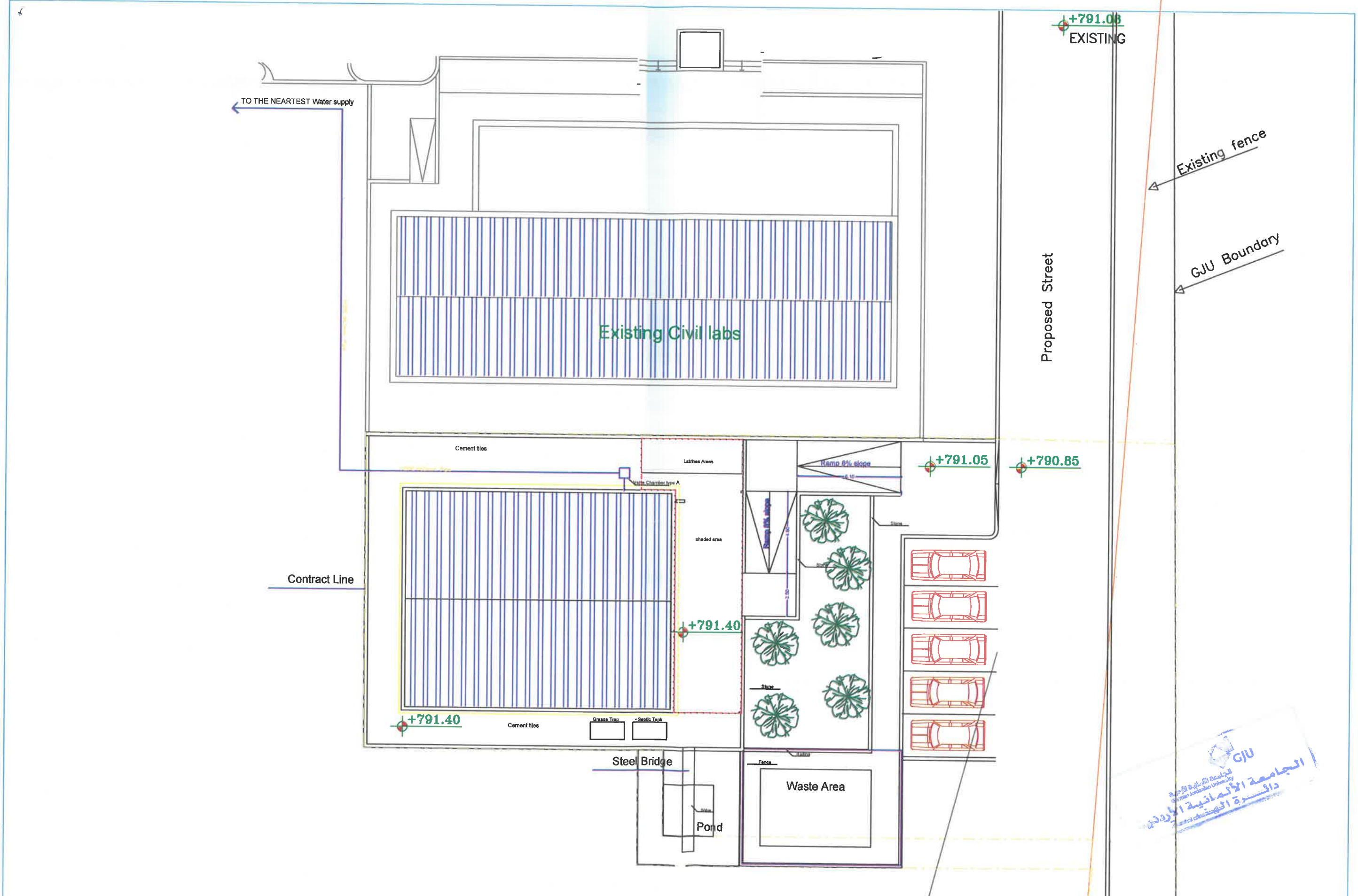
WASH MASTER WAREHOUSE	External Work Waste Water	Scale 1/100	M01
-----------------------	------------------------------	----------------	-----



Client
 GJU
 الجامعة الألمانية الأردنية
 German Jordanian University
 AMMAN - JORDAN

Consultant
 German Jordanian
 University
 AMMAN - JORDAN

WASH MASTER WAREHOUSE	External Work Rain Water	Scale 1/100	E02
-----------------------	-----------------------------	----------------	-----



KEY PLAN

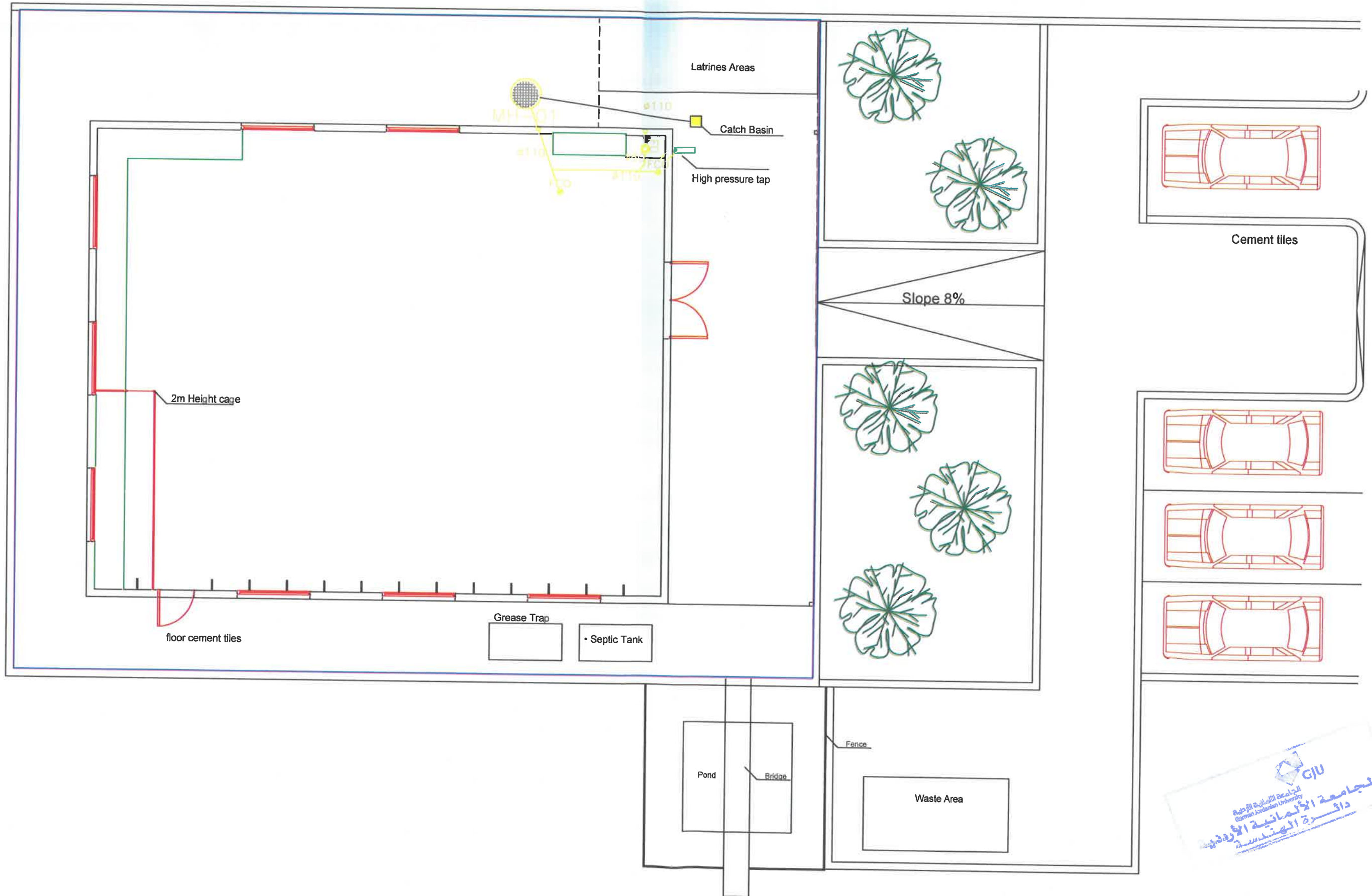
Client

الجامعة الألمانية الأردنية
German Jordanian University

Consultant

German Jordanian University
AMMAN - JORDAN

WASH MASTER WAREHOUSE	External Work Water Supply	Scale 1/100	E03
-----------------------	----------------------------	----------------	-----



PRODUCED BY AN AUTODESK STUDENT VERSION

PRODUCED BY AN AUTODESK STUDENT VERSION



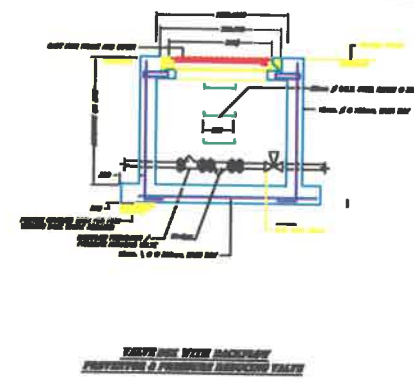
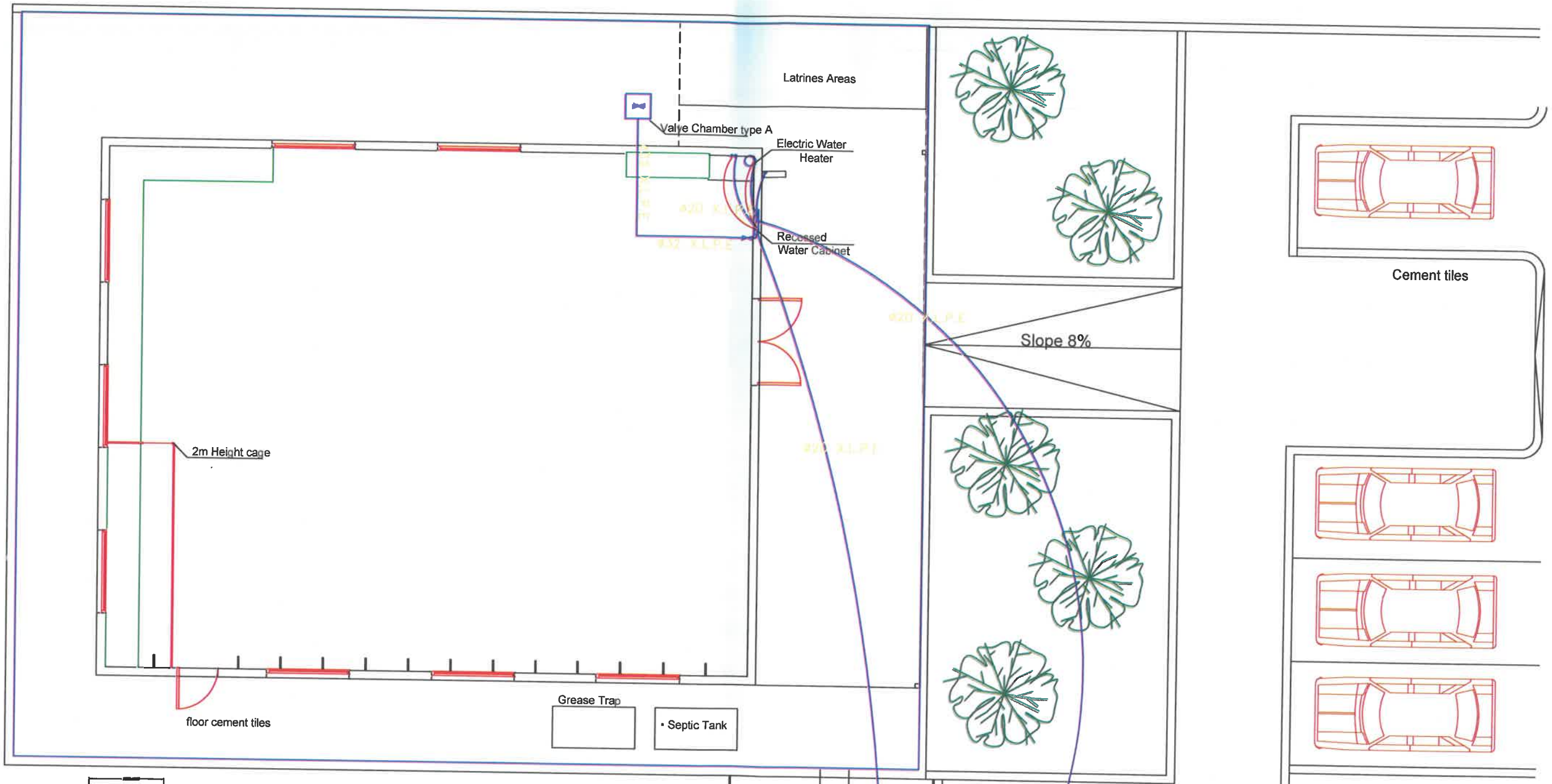
Client



GJU
 الجامعة الألمانية الأردنية
 German Jordanian University

Consultant
 German Jordanian University
 AMMAN - JORDAN

WASH MASTER WAREHOUSE	Drainage System	Scale 1/100	E04
-----------------------	-----------------	----------------	-----





<p>KEY PLAN</p> 	<p>Client</p>	 <p>الجامعة الألمانية الأردنية German Jordanian University</p>	<p>Consultant German Jordanian University AMMAN - JORDAN</p>	<p>WASH MASTER WAREHOUSE</p>	<p>Domestic Water System</p>	<p>Scale 1/100</p>	<p>E05</p>
---	---------------	---	--	------------------------------	------------------------------	------------------------	------------